

Технические характеристики

По вопросам продаж и поддержки обращайтесь:

Алматы (7273)495-231
Архангельск (8182)63-90-72
Астрахань (8512)99-46-04
Барнаул (3852)73-04-60
Белгород (4722)40-23-64
Брянск (4832)59-03-52
Владивосток (423)249-28-31
Волгоград (844)278-03-48
Вологда (8172)26-41-59
Воронеж (473)204-51-73
Екатеринбург (343)384-55-89
Иваново (4932)77-34-06
Ижевск (3412)26-03-58
Иркутск (395)279-98-46
Россия (495)268-04-70

Казань (843)206-01-48
Калининград (4012)72-03-81
Калуга (4842)92-23-67
Кемерово (3842)65-04-62
Киров (8332)68-02-04
Краснодар (861)203-40-90
Красноярск (391)204-63-61
Курск (4712)77-13-04
Липецк (4742)52-20-81
Магнитогорск (3519)55-03-13
Москва (495)268-04-70
Мурманск (8152)59-64-93
Набережные Челны (8552)20-53-41
Нижний Новгород (831)429-08-12
Киргизия (996)312-96-26-47

Новокузнецк (3843)20-46-81
Новосибирск (383)227-86-73
Омск (3812)21-46-40
Орел (4862)44-53-42
Оренбург (3532)37-68-04
Пенза (8412)22-31-16
Пермь (342)205-81-47
Ростов-на-Дону (863)308-18-15
Рязань (4912)46-61-64
Самара (846)206-03-16
Санкт-Петербург (812)309-46-40
Саратов (845)249-38-78
Севастополь (8692)22-31-93
Симферополь (3652)67-13-56
Казахстан (7172)727-132

Смоленск (4812)29-41-54
Сочи (862)225-72-31
Ставрополь (8652)20-65-13
Сургут (3462)77-98-35
Тверь (4822)63-31-35
Томск (3822)98-41-53
Тула (4872)74-02-29
Тюмень (3452)66-21-18
Ульяновск (8422)24-23-59
Уфа (347)229-48-12
Хабаровск (4212)92-98-04
Челябинск (351)202-03-61
Череповец (8202)49-02-64
Ярославль (4852)69-52-93

TYTAN LED PRO

GENERAL CARD



TECHNICAL PARAMETERS

Ingress protection:	IP65; IP67
Impact resistance:	IK09
Nominal power [W]:	13.00 - 70.00
Luminous flux [lm]*:	2500 - 12000
Colour temperature [K]:	4000
Colour rendering index:	>80
SDCM:	≤ 3
Energy efficiency class:	B
Material of the body:	PC
Diffuser material:	PC
Diffuser type:	MAT
Optics material:	PC
Mounting version:	surface, suspended
Dimensions (H/W/T/S) [mm]:	1152/85/80; 1237/85/80; 1432/85/80
Warranty [years]:	2 / 0.5 (battery); 5

CHARACTERISTICS

TYTAN LED PRO is a fitting from NEXT GEN line, which is a new generation of fittings in LED technology. The fitting, designed from scratch, allows new solutions improving the light distribution and temperature balance. Branded LED diodes and new LED modules have influence on a very high luminous efficacy: up to 178 lm/W. It guarantees the best required lighting level and energy saving. The solution based on integration of the diffuser and LED panel is applied in the fitting. The fitting has a lot of facilities making the mounting easier and faster: the system of diffuser suspension, adjustable mounting brackets ensuring the mounting tolerance +/-40mm. Standard equipment of the fitting: clips made of stainless steel (INOX). Motion sensor mounting height: up to 5 meters.

APPLICATION

The multifunctional LED lamp is designed for use in areas with high requirements for dust and water resistance. Especially recommended for lighting public facilities, including hospitals, educational facilities, halls, garages, passages, warehouses, shops, food industry, commercial and industrial facilities (factories, laboratories), warehouses, parking lots (underground and multi-level), sports stadiums, transport terminals and underground passages. The luminaire is ideal for new lighting applications as well as replacing traditional fluorescent luminaires with energy-saving LED solutions. Its design is adapted for surface and suspended mounting.

TYTAN LED PRO

GENERAL CARD

AVAILABLE VERSIONS



Click index >>, to see details

TYTAN LED PRO 13W

Nominal power [W]	Colour temperature [K]	Luminous flux [lm]*	Diffuser type	Motion sensor	DIMM DALI	Through wiring	Emergency lighting [h]	Dimensions (H/W/T/S) [mm]	Energy efficiency class	Index
13	4000	2500	MAT				3	1152/85/80	B	>> 389061
13	4000	2500	MAT			LS2		1152/85/80	B	>> 389023
13	4000	2500	MAT	yes				1152/85/80	B	>> 389047
13	4000	2500	MAT					1152/85/80	B	>> 389009
13	4000	2500	MAT		yes			1152/85/80	B	>> 389283

TYTAN LED PRO 24W

Nominal power [W]	Colour temperature [K]	Luminous flux [lm]*	Diffuser type	Motion sensor	DIMM DALI	Through wiring	Emergency lighting [h]	Dimensions (H/W/T/S) [mm]	Energy efficiency class	Index
24	4000	4350	MAT					1152/85/80	B	>> 389016
24	4000	4350	MAT				3	1152/85/80	B	>> 389078
24	4000	4350	MAT			LS2		1152/85/80	B	>> 389030
24	4000	4350	MAT	yes				1152/85/80	B	>> 389054
24	4000	4350	MAT		yes			1152/85/80	B	>> 389290

TYTAN LED PRO 29W

Nominal power [W]	Colour temperature [K]	Luminous flux [lm]*	Diffuser type	Motion sensor	DIMM DALI	Through wiring	Emergency lighting [h]	Dimensions (H/W/T/S) [mm]	Energy efficiency class	Index
29	4000	5450	MAT					1432/85/80	B	>> 389160
29	4000	5450	MAT				3	1432/85/80	B	>> 389191
29	4000	5450	MAT			LS2		1432/85/80	B	>> 389177
29	4000	5450	MAT	yes				1432/85/80	B	>> 389184
29	4000	5450	MAT		yes			1432/85/80	B	>> 389320

TYTAN LED PRO 33W

Nominal power [W]	Colour temperature [K]	Luminous flux [lm]*	Diffuser type	Motion sensor	DIMM DALI	Through wiring	Emergency lighting [h]	Dimensions (H/W/T/S) [mm]	Energy efficiency class	Index
33	4000	6300	MAT					1432/85/80	B	>> 389207
33	4000	6300	MAT				3	1432/85/80	B	>> 389269
33	4000	6300	MAT			LS2		1432/85/80	B	>> 389221
33	4000	6300	MAT	yes				1432/85/80	B	>> 389245
33	4000	6300	MAT		yes			1432/85/80	B	>> 389337

TYTAN LED PRO 40W

Nominal power [W]	Colour temperature [K]	Luminous flux [lm]*	Diffuser type	Motion sensor	DIMM DALI	Through wiring	Emergency lighting [h]	Dimensions (H/W/T/S) [mm]	Energy efficiency class	Index
40	4000	7500	MAT					1152/85/80	B	>> 389085

TYTAN LED PRO

GENERAL CARD

Nominal power [W]	Colour temperature [K]	Luminous flux [lm]*	Diffuser type	Motion sensor	DIMM DALI	Through wiring	Emergency lighting [h]	Dimensions (H/W/T/S) [mm]	Energy efficiency class	Index
40	4000	7500	MAT				3	1152/85/80	B	>> 389146
40	4000	7500	MAT			LS2		1152/85/80	B	>> 389108
40	4000	7500	MAT	yes				1152/85/80	B	>> 389122
40	4000	7500	MAT		yes			1152/85/80	B	>> 389306

TYTAN LED PRO 47W

Nominal power [W]	Colour temperature [K]	Luminous flux [lm]*	Diffuser type	Motion sensor	DIMM DALI	Through wiring	Emergency lighting [h]	Dimensions (H/W/T/S) [mm]	Energy efficiency class	Index
47	4000	8700	MAT					1152/85/80	B	>> 389092
47	4000	8700	MAT				3	1152/85/80	B	>> 389153
47	4000	8700	MAT			LS2		1152/85/80	B	>> 389115
47	4000	8700	MAT	yes				1152/85/80	B	>> 389139
47	4000	8700	MAT		yes			1152/85/80	B	>> 389313
47	4000	8700	MAT		yes			1237/85/80	B	>> 552663

TYTAN LED PRO 59W

Nominal power [W]	Colour temperature [K]	Luminous flux [lm]*	Diffuser type	Motion sensor	DIMM DALI	Through wiring	Emergency lighting [h]	Dimensions (H/W/T/S) [mm]	Energy efficiency class	Index
59	4000	10900	MAT					1432/85/80	B	>> 389214
59	4000	10900	MAT				3	1432/85/80	B	>> 389276
59	4000	10900	MAT			LS2		1432/85/80	B	>> 389238
59	4000	10900	MAT	yes				1432/85/80	B	>> 389252
59	4000	10900	MAT		yes			1432/85/80	B	>> 389344

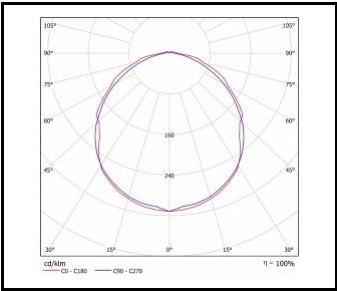
TYTAN LED PRO 70W

Nominal power [W]	Colour temperature [K]	Luminous flux [lm]*	Diffuser type	Motion sensor	DIMM DALI	Through wiring	Emergency lighting [h]	Dimensions (H/W/T/S) [mm]	Energy efficiency class	Index
70	4000	12000	MAT					1432/85/80	B	>> 389351
70	4000	12000	MAT				3	1432/85/80	B	>> 389382
70	4000	12000	MAT			LS2		1432/85/80	B	>> 389368
70	4000	12000	MAT	yes				1432/85/80	B	>> 389375
70	4000	12000	MAT		yes			1432/85/80	B	>> 389399

TYTAN LED PRO

GENERAL CARD

LUMINOUS INTENSITY DISTRIB. CURVE



TYTAN LED PRO

TYTAN LED PRO

GENERAL CARD

ACCESSORIES AVAILABLE

index	Name
907913	TYTAN LED, ATLAS LED - protective grid 1152mm
907920	TYTAN LED, ATLAS LED - protective grid 1432mm
16000507	Breathable gland gray M20*1.5 IP68
358937	TYTAN MULTI LED 1150mm 2500-4300lm 840 - lighting module
358944	TYTAN MULTI LED 1150mm 5000-8700lm 840 - lighting module
358951	TYTAN MULTI LED 1450mm 3150-5450lm 840 - lighting module
358968	TYTAN MULTI LED 1450mm 6300-10800lm 840 - lighting module
60000006	M16 stuffing box plug various PA black M-16 - BPM-21
908231	TYTAN LED - holder
80000279	Gland, beam, Codar, soft polyvinyl chloride (PVC-P), gray



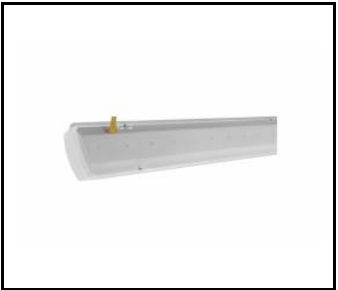
TYTAN LED, ATLAS LED - protective grid 1152mm (907913)



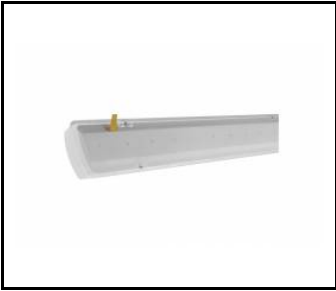
TYTAN LED, ATLAS LED - protective grid 1432mm (907920)



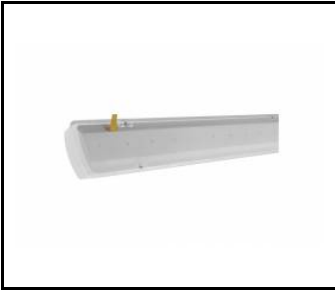
Breathable gland gray M20*1.5 IP68 (16000507)



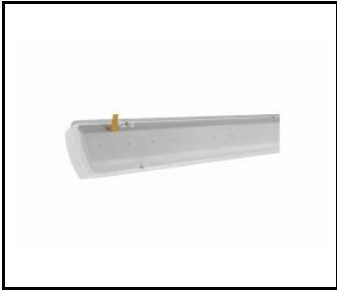
TYTAN MULTI LED 1150mm 2500-4300lm 840 - lighting module (358937)



TYTAN MULTI LED 1150mm 5000-8700lm 840 - lighting module (358944)



TYTAN MULTI LED 1450mm 3150-5450lm 840 - lighting module (358951)



TYTAN MULTI LED 1450mm 6300-10800lm 840 - lighting module (358968)

TYTAN MULTI LED

GENERAL CARD



TECHNICAL PARAMETERS

Ingress protection:	IP67
Impact resistance:	IK09
Colour temperature [K]:	4000
Colour rendering index:	>80
SDCM:	≤ 3
Material of the body:	PC
Diffuser material:	PC
Diffuser type:	MAT
Optics material:	PC
Mounting version:	surface, suspended
Dimensions (H/W/T/S) [mm]:	1152/85/80; 1432/85/80
Warranty [years]:	2 / 0.5 (battery); 5

CHARACTERISTICS

TYTAN MULTI LED is a fitting from NEXT GEN line, which is a new generation of fittings in LED technology. The fitting, designed from scratch, allows new solutions improving the light distribution and temperature balance. Branded LED diodes and new LED modules have influence on a very high luminous efficacy: up to 175 lm/W. It guarantees the best required lighting level and energy saving up to 68%. The solution based on integration of the diffuser and LED module is applied in the fitting. The fitting has a lot of facilities making the mounting easier and faster: the system of diffuser suspension, adjustable mounting brackets ensuring the mounting tolerance +/-40mm. Standard equipment of the fitting: clips made of stainless steel (INOX). Motion sensor mounting height: up to 5 meters. The MULTI luminaire version allows individual configuration: thanks to the built-in microswitch, it is possible to choose one of four settings (nominal power of the fitting [W] / luminous flux of the fitting [lm]):

13W-24W - 1. 13W/2500 lm; 2. 17W/3150 lm; 3. 20W/3750 lm; 4. 24W/4350 lm;
26W-47W - 1. 26W/5000 lm; 2. 33W/6250 lm; 3. 40W/7500 lm; 4. 47W/8700 lm;
21W-29W - 1. 16W/3150 lm; 2. 21W/3900 lm; 3. 25W/4700 lm; 4. 29W/5450 lm;
33W-59W - 1. 33W/6300 lm; 2. 41W/7850 lm; 3. 50W/9350 lm; 4. 59W/10900 lm.

APPLICATION

The multifunctional LED lamp is designed for use in areas with high requirements for dust and water resistance. Especially recommended for lighting public facilities, including hospitals, educational facilities, halls, garages, passages, warehouses, shops, food industry, commercial and industrial facilities (factories, laboratories), warehouses, parking lots (underground and multi-level) , sports stadiums, transport terminals and underground passages. The luminaire is ideal for new lighting applications as well as replacing traditional fluorescent luminaires with energy-saving LED solutions. Its design is adapted for surface and suspended mounting.

TYTAN MULTI LED

GENERAL CARD

AVAILABLE VERSIONS



Click index >>, to see details

TYTAN MULTI LED 13/17/20/24W

Nominal power [W] - range	Colour temperature [K]	Luminous flux of the luminaire [lm] - range	Diffuser type	Motion sensor	Through wiring	Emergency lighting [h]	Dimensions (H/W/T/S) [mm]	Index
13/17/20/24	4000	2500/3150/3750/4350	MAT				1152/85/80	>> 358777
13/17/20/24	4000	2500/3150/3750/4350	MAT			3	1152/85/80	>> 358807
13/17/20/24	4000	2500/3150/3750/4350	MAT	yes			1152/85/80	>> 358791
13/17/20/24	4000	2500/3150/3750/4350	MAT		LS2		1152/85/80	>> 358784

TYTAN MULTI LED 16/21/25/29W

Nominal power [W] - range	Colour temperature [K]	Luminous flux of the luminaire [lm] - range	Diffuser type	Motion sensor	Through wiring	Emergency lighting [h]	Dimensions (H/W/T/S) [mm]	Index
16/21/25/29	4000	3150/3900/4700/5450	MAT				1432/85/80	>> 358852
16/21/25/29	4000	3150/3900/4700/5450	MAT			3	1432/85/80	>> 358883
16/21/25/29	4000	3150/3900/4700/5450	MAT	yes			1432/85/80	>> 358876
16/21/25/29	4000	3150/3900/4700/5450	MAT		LS2		1432/85/80	>> 358869

TYTAN MULTI LED 26/33/40/47W

Nominal power [W] - range	Colour temperature [K]	Luminous flux of the luminaire [lm] - range	Diffuser type	Motion sensor	Through wiring	Emergency lighting [h]	Dimensions (H/W/T/S) [mm]	Index
26/33/40/47	4000	5000/6250/7500/8700	MAT				1152/85/80	>> 358814
26/33/40/47	4000	5000/6250/7500/8700	MAT			3	1152/85/80	>> 358845
26/33/40/47	4000	5000/6250/7500/8700	MAT	yes			1152/85/80	>> 358838
26/33/40/47	4000	5000/6250/7500/8700	MAT		LS2		1152/85/80	>> 358821

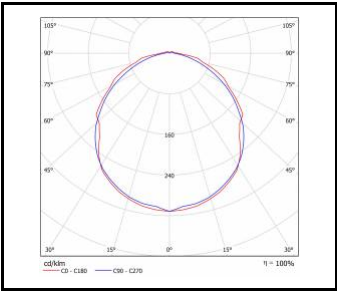
TYTAN MULTI LED 33/41/50/59W

Nominal power [W] - range	Colour temperature [K]	Luminous flux of the luminaire [lm] - range	Diffuser type	Motion sensor	Through wiring	Emergency lighting [h]	Dimensions (H/W/T/S) [mm]	Index
33/41/50/59	4000	6300/7850/9350/10900	MAT				1432/85/80	>> 358890
33/41/50/59	4000	6300/7850/9350/10900	MAT			3	1432/85/80	>> 358920
33/41/50/59	4000	6300/7850/9350/10900	MAT	yes			1432/85/80	>> 358913
33/41/50/59	4000	6300/7850/9350/10900	MAT		LS2		1432/85/80	>> 358906

TYTAN MULTI LED

GENERAL CARD

LUMINOUS INTENSITY DISTRIB. CURVE



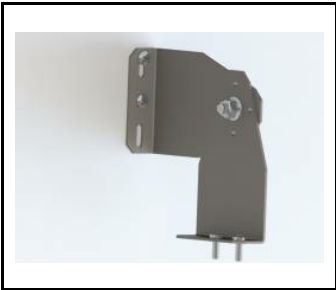
TYTAN MULTI LED

TYTAN MULTI LED

GENERAL CARD

ACCESSORIES AVAILABLE

index	Name
908200	TYTAN LED, ATLAS LED, INDUSTRY LED - adjustable handle (set of 2)
907913	TYTAN LED, ATLAS LED - protective grid 1152mm
907920	TYTAN LED, ATLAS LED - protective grid 1432mm
16000507	Breathable gland gray M20*1.5 IP68
358937	TYTAN MULTI LED 1150mm 2500-4300lm 840 - lighting module
358944	TYTAN MULTI LED 1150mm 5000-8700lm 840 - lighting module
358951	TYTAN MULTI LED 1450mm 3150-5450lm 840 - lighting module
358968	TYTAN MULTI LED 1450mm 6300-10800lm 840 - lighting module
60000006	M16 stuffing box plug various PA black M-16 - BPM-21
80000378	Cable gland PG 13.5 Titanium PA 6.6 gray with nut



TYTAN LED, ATLAS LED, INDUSTRY LED - adjustable handle (set of 2) (908200)



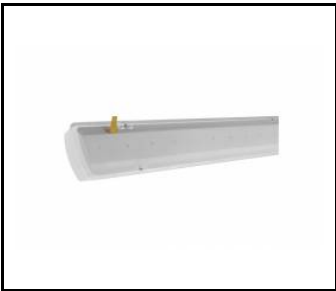
TYTAN LED, ATLAS LED - protective grid 1152mm (907913)



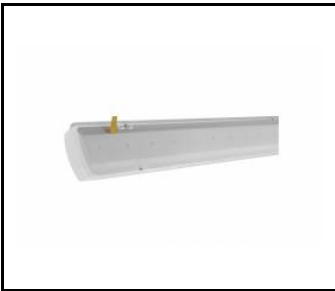
TYTAN LED, ATLAS LED - protective grid 1432mm (907920)



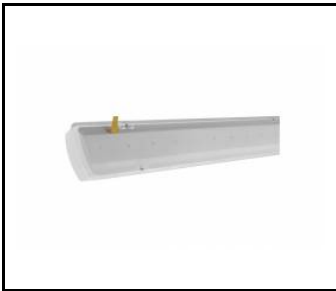
Breathable gland gray M20*1.5 IP68 (16000507)



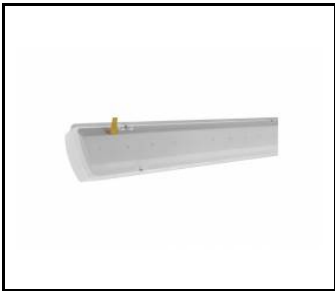
TYTAN MULTI LED 1150mm 2500-4300lm 840 - lighting module (358937)



TYTAN MULTI LED 1150mm 5000-8700lm 840 - lighting module (358944)



TYTAN MULTI LED 1450mm 3150-5450lm 840 - lighting module (358951)



TYTAN MULTI LED 1450mm 6300-10800lm 840 - lighting module (358968)

TYTAN 2 LED

GENERAL CARD



TECHNICAL PARAMETERS

Ingress protection:	IP66
Impact resistance:	IK09
Nominal power [W]:	16.00 - 69.00
Luminous flux [lm]*:	2450 - 11300
Colour temperature [K]:	3000; 4000; 5000
Material of the body:	PC
Colour of the body:	grey
Diffuser material:	PC
Diffuser type:	MAT
Mounting version:	surface, suspended
Dimensions (H/W/T/S) [mm]:	1152/85/80; 1432/85/80
Warranty [years]:	5

CHARACTERISTICS

TYTAN 2 LED is a fitting from NEXT GEN line, which is a new generation of fittings in LED technology. The fitting, designed from scratch, allows new solutions improving the light distribution and temperature balance. Branded LED diodes and new LED modules have influence on a very high luminous efficacy: 155 lm/W. It guarantees the best required lighting level and energy saving up to 68%. The solution based on integration of the diffuser and LED module is applied in the fitting. The fitting has a lot of facilities making the mounting easier and faster: the system of diffuser suspension, adjustable mounting brackets ensuring the mounting tolerance +/-40mm. Standard equipment of the fitting: clips made of stainless steel (INOX).

APPLICATION

The multifunctional LED lamp is designed for use in areas with high requirements for dust and water resistance. Especially recommended for lighting public facilities, including hospitals, educational facilities, halls, garages, passages, warehouses, shops, food industry, commercial and industrial facilities (factories, laboratories), warehouses, parking lots (underground and multi-level), sports stadiums, transport terminals and underground passages. The luminaire is ideal for new lighting applications as well as replacing traditional fluorescent luminaires with energy-saving LED solutions. Its design is adapted for surface and suspended mounting.

TYTAN 2 LED

GENERAL CARD

AVAILABLE VERSIONS



Click index >>, to see details

TYTAN 2 LED 16W

Nominal power [W]	Colour temperature [K]	Luminous flux [lm]*	Diffuser type	Motion sensor	DIMM DALI	Emergency lighting [h]	Autotest	Through wiring	Wire type	Dimensions (H/W/T/S) [mm]	Index
16	3000	2450	MAT							1152/85/80	>> 941436
16	3000	2450	MAT			3	yes			1152/85/80	>> 941474
16	3000	2450	MAT					LS2	5x2,5	1152/85/80	>> 941467
16	3000	2450	MAT					LS2	5x1,5	1152/85/80	>> 941450
16	3000	2450	MAT	yes						1152/85/80	>> 941481
16	3000	2450	MAT		yes					1152/85/80	>> 941443
16	4000	2650	MAT			3	yes			1152/85/80	>> 941030
16	4000	2650	MAT					LS2	5x2,5	1152/85/80	>> 941023
16	4000	2650	MAT					LS2	5x1,5	1152/85/80	>> 941016
16	4000	2650	MAT	yes						1152/85/80	>> 941047
16	4000	2650	MAT							1152/85/80	>> 909702
16	4000	2650	MAT		yes					1152/85/80	>> 941009
16	5000	2650	MAT							1152/85/80	>> 941917
16	5000	2650	MAT			3	yes			1152/85/80	>> 941955
16	5000	2650	MAT					LS2	5x2,5	1152/85/80	>> 941948
16	5000	2650	MAT					LS2	5x1,5	1152/85/80	>> 941931
16	5000	2650	MAT	yes						1152/85/80	>> 941962
16	5000	2650	MAT		yes					1152/85/80	>> 941924

TYTAN 2 LED 28W

Nominal power [W]	Colour temperature [K]	Luminous flux [lm]*	Diffuser type	Motion sensor	DIMM DALI	Emergency lighting [h]	Autotest	Through wiring	Wire type	Dimensions (H/W/T/S) [mm]	Index
28	3000	4150	MAT							1152/85/80	>> 941498
28	3000	4150	MAT			3	yes			1152/85/80	>> 941535
28	3000	4150	MAT					LS2	5x2,5	1152/85/80	>> 941528
28	3000	4150	MAT					LS2	5x1,5	1152/85/80	>> 941511
28	3000	4150	MAT	yes						1152/85/80	>> 941542
28	3000	4150	MAT		yes					1152/85/80	>> 941504
28	4000	4550	MAT			3	yes			1152/85/80	>> 941085
28	4000	4550	MAT					LS2	5x2,5	1152/85/80	>> 941078
28	4000	4550	MAT					LS2	5x1,5	1152/85/80	>> 941061
28	4000	4550	MAT	yes						1152/85/80	>> 941092
28	4000	4550	MAT							1152/85/80	>> 909719
28	4000	4550	MAT		yes					1152/85/80	>> 941054

TYTAN 2 LED

GENERAL CARD

Nominal power [W]	Colour temperature [K]	Luminous flux [lm]*	Diffuser type	Motion sensor	DIMM DALI	Emergency lighting [h]	Autotest	Through wiring	Wire type	Dimensions (H/W/T/S) [mm]	Index
28	5000	4550	MAT							1152/85/80	>> 941979
28	5000	4550	MAT			3	yes			1152/85/80	>> 942013
28	5000	4550	MAT					LS2	5x2,5	1152/85/80	>> 942006
28	5000	4550	MAT					LS2	5x1,5	1152/85/80	>> 941993
28	5000	4550	MAT	yes						1152/85/80	>> 942020
28	5000	4550	MAT		yes					1152/85/80	>> 941986

TYTAN 2 LED 35W

Nominal power [W]	Colour temperature [K]	Luminous flux [lm]*	Diffuser type	Motion sensor	DIMM DALI	Emergency lighting [h]	Autotest	Through wiring	Wire type	Dimensions (H/W/T/S) [mm]	Index
35	3000	5250	MAT							1432/85/80	>> 941733
35	3000	5250	MAT			3	yes			1432/85/80	>> 941771
35	3000	5250	MAT					LS2	5x2,5	1432/85/80	>> 941764
35	3000	5250	MAT					LS2	5x1,5	1432/85/80	>> 941757
35	3000	5250	MAT	yes						1432/85/80	>> 941788
35	3000	5250	MAT		yes					1432/85/80	>> 941740
35	4000	5650	MAT							1432/85/80	>> 909740
35	4000	5650	MAT			3	yes			1432/85/80	>> 941306
35	4000	5650	MAT					LS2	5x2,5	1432/85/80	>> 941290
35	4000	5650	MAT					LS2	5x1,5	1432/85/80	>> 941283
35	4000	5650	MAT	yes						1432/85/80	>> 941313
35	4000	5650	MAT		yes					1432/85/80	>> 941276
35	5000	5650	MAT							1432/85/80	>> 942228
35	5000	5650	MAT			3	yes			1432/85/80	>> 942273
35	5000	5650	MAT					LS2	5x2,5	1432/85/80	>> 942266
35	5000	5650	MAT					LS2	5x1,5	1432/85/80	>> 942259
35	5000	5650	MAT	yes						1432/85/80	>> 942280
35	5000	5650	MAT		yes					1432/85/80	>> 942242

TYTAN 2 LED 42W

Nominal power [W]	Colour temperature [K]	Luminous flux [lm]*	Diffuser type	Motion sensor	DIMM DALI	Emergency lighting [h]	Autotest	Through wiring	Wire type	Dimensions (H/W/T/S) [mm]	Index
42	3000	6550	MAT							1432/85/80	>> 941795
42	3000	6550	MAT			3	yes			1432/85/80	>> 941832
42	3000	6550	MAT					LS2	5x2,5	1432/85/80	>> 941825
42	3000	6550	MAT					LS2	5x1,5	1432/85/80	>> 941818
42	3000	6550	MAT	yes						1432/85/80	>> 941849
42	3000	6550	MAT		yes					1432/85/80	>> 941801
42	4000	7050	MAT			3	yes			1432/85/80	>> 941351
42	4000	7050	MAT					LS2	5x2,5	1432/85/80	>> 941344

TYTAN 2 LED

GENERAL CARD

Nominal power [W]	Colour temperature [K]	Luminous flux [lm]*	Diffuser type	Motion sensor	DIMM DALI	Emergency lighting [h]	Autotest	Through wiring	Wire type	Dimensions (H/W/T/S) [mm]	Index
42	4000	7050	MAT					LS2	5x1,5	1432/85/80	>> 941337
42	4000	7050	MAT	yes						1432/85/80	>> 941368
42	4000	7050	MAT							1432/85/80	>> 909757
42	4000	7050	MAT		yes					1432/85/80	>> 941320
42	5000	7050	MAT							1432/85/80	>> 942297
42	5000	7050	MAT			3	yes			1432/85/80	>> 942334
42	5000	7050	MAT					LS2	5x2,5	1432/85/80	>> 942327
42	5000	7050	MAT					LS2	5x1,5	1432/85/80	>> 942310
42	5000	7050	MAT	yes						1432/85/80	>> 942341
42	5000	7050	MAT		yes					1432/85/80	>> 942303

TYTAN 2 LED 47W

Nominal power [W]	Colour temperature [K]	Luminous flux [lm]*	Diffuser type	Motion sensor	DIMM DALI	Emergency lighting [h]	Autotest	Through wiring	Wire type	Dimensions (H/W/T/S) [mm]	Index
47	3000	7300	MAT							1152/85/80	>> 941559
47	3000	7300	MAT			3	yes			1152/85/80	>> 941597
47	3000	7300	MAT					LS2	5x2,5	1152/85/80	>> 941580
47	3000	7300	MAT					LS2	5x1,5	1152/85/80	>> 941573
47	3000	7300	MAT	yes						1152/85/80	>> 941603
47	3000	7300	MAT		yes					1152/85/80	>> 941566
47	4000	7850	MAT			3	yes			1152/85/80	>> 941153
47	4000	7850	MAT					LS2	5x2,5	1152/85/80	>> 941146
47	4000	7850	MAT					LS2	5x1,5	1152/85/80	>> 941115
47	4000	7850	MAT							1152/85/80	>> 909726
47	4000	7850	MAT	yes						1152/85/80	>> 941160
47	4000	7850	MAT		yes					1152/85/80	>> 941108
47	5000	7850	MAT							1152/85/80	>> 942037
47	5000	7850	MAT			3	yes			1152/85/80	>> 942075
47	5000	7850	MAT					LS2	5x2,5	1152/85/80	>> 942068
47	5000	7850	MAT					LS2	5x1,5	1152/85/80	>> 942051
47	5000	7850	MAT	yes						1152/85/80	>> 942082
47	5000	7850	MAT		yes					1152/85/80	>> 942044

TYTAN 2 LED 55W

Nominal power [W]	Colour temperature [K]	Luminous flux [lm]*	Diffuser type	Motion sensor	DIMM DALI	Emergency lighting [h]	Autotest	Through wiring	Wire type	Dimensions (H/W/T/S) [mm]	Index
55	3000	8400	MAT							1152/85/80	>> 941610
55	3000	8400	MAT			3	yes			1152/85/80	>> 941658
55	3000	8400	MAT					LS2	5x2,5	1152/85/80	>> 941641
55	3000	8400	MAT					LS2	5x1,5	1152/85/80	>> 941634

TYTAN 2 LED

GENERAL CARD

Nominal power [W]	Colour temperature [K]	Luminous flux [lm]*	Diffuser type	Motion sensor	DIMM DALI	Emergency lighting [h]	Autotest	Through wiring	Wire type	Dimensions (H/W/T/S) [mm]	Index
55	3000	8400	MAT	yes						1152/85/80	>> 941665
55	3000	8400	MAT		yes					1152/85/80	>> 941627
55	4000	9050	MAT							1152/85/80	>> 909733
55	4000	9050	MAT			3	yes			1152/85/80	>> 941207
55	4000	9050	MAT					LS2	5x2,5	1152/85/80	>> 941191
55	4000	9050	MAT					LS2	5x1,5	1152/85/80	>> 941184
55	4000	9050	MAT	yes						1152/85/80	>> 941214
55	4000	9050	MAT		yes					1152/85/80	>> 941177
55	5000	9050	MAT							1152/85/80	>> 942099
55	5000	9050	MAT			3	yes			1152/85/80	>> 942143
55	5000	9050	MAT					LS2	5x2,5	1152/85/80	>> 942129
55	5000	9050	MAT					LS2	5x1,5	1152/85/80	>> 942112
55	5000	9050	MAT	yes						1152/85/80	>> 942150
55	5000	9050	MAT		yes					1152/85/80	>> 942105

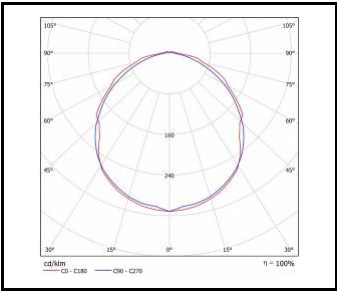
TYTAN 2 LED 69W

Nominal power [W]	Colour temperature [K]	Luminous flux [lm]*	Diffuser type	Motion sensor	DIMM DALI	Emergency lighting [h]	Autotest	Through wiring	Wire type	Dimensions (H/W/T/S) [mm]	Index
69	3000	10500	MAT							1432/85/80	>> 941672
69	3000	10500	MAT			3	yes			1432/85/80	>> 941719
69	3000	10500	MAT					LS2	5x2,5	1432/85/80	>> 941702
69	3000	10500	MAT					LS2	5x1,5	1432/85/80	>> 941696
69	3000	10500	MAT	yes						1432/85/80	>> 941726
69	3000	10500	MAT		yes					1432/85/80	>> 941689
69	4000	11300	MAT							1432/85/80	>> 909764
69	4000	11300	MAT			3	yes			1432/85/80	>> 941252
69	4000	11300	MAT					LS2	5x2,5	1432/85/80	>> 941245
69	4000	11300	MAT					LS2	5x1,5	1432/85/80	>> 941238
69	4000	11300	MAT	yes						1432/85/80	>> 941269
69	4000	11300	MAT		yes					1432/85/80	>> 941221
69	5000	11300	MAT							1432/85/80	>> 942167
69	5000	11300	MAT			3	yes			1432/85/80	>> 942204
69	5000	11300	MAT					LS2	5x2,5	1432/85/80	>> 942198
69	5000	11300	MAT					LS2	5x1,5	1432/85/80	>> 942181
69	5000	11300	MAT	yes						1432/85/80	>> 942211
69	5000	11300	MAT		yes					1432/85/80	>> 942174

TYTAN 2 LED

GENERAL CARD

LUMINOUS INTENSITY DISTRIB. CURVE



TYTAN 2 LED

TYTAN 2 LED

GENERAL CARD

ACCESSORIES AVAILABLE

index	Name
60000006	M16 stuffing box plug various PA black M-16 - BPM-21
941375	TYTAN 2 LED 1150mm 2650lm 840 - moduł świetlny
941382	TYTAN 2 LED 1150mm 4550lm 840 - moduł świetlny
941399	TYTAN 2 LED 1150mm 7850/9050lm 840 - moduł świetlny
941405	TYTAN 2 LED 1450mm 5650lm 840 - moduł świetlny
941412	TYTAN 2 LED 1450mm 7050lm 840 - moduł świetlny
941429	TYTAN 2 LED 1450mm 11300lm 840 - moduł świetlny
941856	TYTAN 2 LED 1150mm 2450lm 830 - moduł świetlny
941863	TYTAN 2 LED 1150mm 4150lm 830 - moduł świetlny
941870	TYTAN 2 LED 1150mm 7300/8400lm 830 - moduł świetlny
941887	TYTAN 2 LED 1450mm 5250lm 830 - moduł świetlny
941894	TYTAN 2 LED 1450mm 6550lm 830 - moduł świetlny
941900	TYTAN 2 LED 1450mm 10500lm 830 - moduł świetlny
942358	TYTAN 2 LED 1150mm 2650lm 850 - moduł świetlny
942365	TYTAN 2 LED 1150mm 4550lm 850 - moduł świetlny
942372	TYTAN 2 LED 1150mm 7850/9050lm 850 - moduł świetlny
942389	TYTAN 2 LED 1450mm 5650lm 850 - moduł świetlny
942396	TYTAN 2 LED 1450mm 7050lm 850 - moduł świetlny
942402	TYTAN 2 LED 1450mm 11300lm 850 - moduł świetlny
908231	TYTAN LED - holder
80000279	Gland, beam, Codar, soft polyvinyl chloride (PVC-P), gray

TYTAN 2 LED ENDURA

GENERAL CARD



TECHNICAL PARAMETERS

Light source:	LED module
Ingress protection:	IP66
Impact resistance:	IK09
Nominal power [W]:	28.00 - 69.00
Luminous flux [lm]*:	4750 - 11300
Colour temperature [K]:	4000
Material of the body:	PC
Colour of the body:	grey
Diffuser material:	PC
Diffuser type:	MAT
Working temperature [°C]:	from -40 to +45; from -40 to +60
Mounting version:	surface, suspended
Dimensions (H/W/T/S) [mm]:	1152/85/80; 1432/85/80

CHARACTERISTICS

TYTAN 2 LED ENDURA is a fitting from NEXT GEN line, which is a new generation of fittings in LED technology. The fitting, designed from scratch, allows new solutions improving the light distribution and temperature balance. Branded led diodes and new LED modules have influence on a very high luminous flux: 155 lm/W. It guarantees the best required lighting level and energy saving up to 68%. The solution based on integration of the diffuser and LED modul is applied in the fitting. The fitting has a lot of facilities making the mounting easier and faster: the system of diffuser suspension, adjustable mounting brackets ensuring the mounting tolerance +/-40mm. Standard equipment of the fitting: clips made of stainless steel (INOX).

APPLICATION

The multifunctional LED lamp is designed for use in areas with high requirements for dust and water resistance. Especially recommended for lighting public facilities, including hospitals, educational facilities, halls, garages, passages, warehouses, shops, food industry, commercial and industrial facilities (factories, laboratories), warehouses, parking lots (underground and multi-level) , sports stadiums, transport terminals and underground passages. The luminaire is ideal for new lighting applications as well as replacing traditional fluorescent luminaires with energy-saving LED solutions. Its design is adapted for surface and suspended mounting.

TYTAN 2 LED ENDURA

GENERAL CARD

AVAILABLE VERSIONS



Click index >>, to see details

TYTAN 2 LED ENDURA MINUS

Nominal power [W]	Colour temperature [K]	Luminous flux [lm]*	Diffuser type	Through wiring	Wire type	Working temperature [°C]	Dimensions (H/W/T/S) [mm]	Index
55	4000	9050	MAT			from -40 to +45	1152/85/80	>> 911507
55	4000	9050	MAT	LS2	5x1,5	from -40 to +45	1152/85/80	>> 911514
69	4000	11300	MAT			from -40 to +45	1432/85/80	>> 911521
69	4000	11300	MAT	LS2	5x1,5	from -40 to +45	1432/85/80	>> 911538

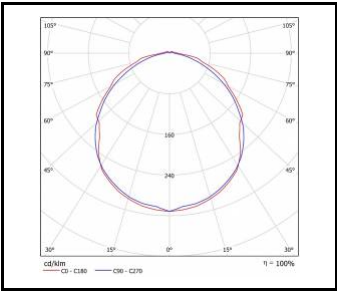
TYTAN 2 LED ENDURA PLUS

Nominal power [W]	Colour temperature [K]	Luminous flux [lm]*	Diffuser type	Through wiring	Wire type	Working temperature [°C]	Dimensions (H/W/T/S) [mm]	Index
28	4000	4750	MAT			from -40 to +60	1152/85/80	>> 909801
28	4000	4750	MAT	LS2	5x1,5	from -40 to +60	1152/85/80	>> 909818
35	4000	5950	MAT			from -40 to +60	1432/85/80	>> 909849
35	4000	5950	MAT	LS2	5x1,5	from -40 to +60	1432/85/80	>> 909856
43	4000	7050	MAT			from -40 to +60	1152/85/80	>> 909825
43	4000	7050	MAT	LS2	5x1,5	from -40 to +60	1152/85/80	>> 909832
49	4000	8200	MAT			from -40 to +60	1432/85/80	>> 909863
49	4000	8200	MAT	LS2	5x1,5	from -40 to +60	1432/85/80	>> 909870

TYTAN 2 LED ENDURA

GENERAL CARD

LUMINOUS INTENSITY DISTRIB. CURVE



TYTAN 2 LED

TYTAN 2 LED ENDURA

GENERAL CARD

ACCESSORIES AVAILABLE

index	Name
60000006	M16 stuffing box plug various PA black M-16 - BPM-21
908231	TYTAN LED - holder
80000279	Gland, beam, Codar, soft polyvinyl chloride (PVC-P), gray

TYTAN 2 LED CHEMO

GENERAL CARD



TECHNICAL PARAMETERS

Ingress protection:	IP66
Impact resistance:	IK09
Nominal power [W]:	28.00 - 69.00
Luminous flux [lm]*:	4550 - 11300
Colour temperature [K]:	4000
Material of the body:	ABS
Colour of the body:	grey
Diffuser material:	PCT-G
Diffuser type:	MAT
Mounting version:	surface, suspended
Dimensions (H/W/T/S) [mm]:	1152/85/80; 1432/85/80
Warranty [years]:	5

CHARACTERISTICS

TYTAN 2 LED CHEMO is a fitting from NEXT GEN line, which is a new generation of fittings in LED technology. The fitting, designed from scratch, allows new solutions improving the light distribution and temperature balance. Branded LED diodes and new LED modules have influence on a very high luminous efficacy: 155 lm/W. It guarantees the best required lighting level and energy saving up to 68%. The solution based on integration of the diffuser and LED module is applied in the fitting. The fitting has a lot of facilities making the mounting easier and faster: the system of diffuser suspension, adjustable mounting brackets ensuring the mounting tolerance +/-40mm. Standard equipment of the fitting: clips made of stainless steel (INOX). Motion sensor mounting height: up to 5 meters.

The body is made of ABS and diffuser of the luminaire is made of copolyester (PCT-G), characterised by higher resistance to chemicals like, for example, ammonia and chemical disinfectants. As a result, it can be used in a tough chemical environment without any cracks, misting or scratches.

The material of the diffuser is GREENGUARD certified, thus ensuring that the luminaires for indoor use meet strict chemical emission limits, and contributing to healthier indoor environments.

APPLICATION

The multifunction LED lighting fixture is designed for use in areas with high requirements regarding dust tightness and water tightness. Especially recommended for:

- buildings where breeding animals are kept;
- medical rooms where chemical disinfectants are used.

TYTAN 2 LED CHEMO

GENERAL CARD

AVAILABLE VERSIONS



Click index >>, to see details

TYTAN 2 LED CHEMO 28W

Nominal power [W]	Colour temperature [K]	Luminous flux [lm]*	Diffuser type	DIMM DALI	Through wiring	Wire type	Dimensions (H/W/T/S) [mm]	Index
28	4000	4550	MAT				1152/85/80	>> 942501
28	4000	4550	MAT		LS2	5x2,5	1152/85/80	>> 942563
28	4000	4550	MAT		LS2	5x1,5	1152/85/80	>> 942556
28	4000	4550	MAT	yes			1152/85/80	>> 942549

TYTAN 2 LED CHEMO 35W

Nominal power [W]	Colour temperature [K]	Luminous flux [lm]*	Diffuser type	DIMM DALI	Through wiring	Wire type	Dimensions (H/W/T/S) [mm]	Index
35	4000	5650	MAT				1432/85/80	>> 942525
35	4000	5650	MAT		LS2	5x2,5	1432/85/80	>> 942655
35	4000	5650	MAT		LS2	5x1,5	1432/85/80	>> 942648
35	4000	5650	MAT	yes			1432/85/80	>> 942631

TYTAN 2 LED CHEMO 47W

Nominal power [W]	Colour temperature [K]	Luminous flux [lm]*	Diffuser type	DIMM DALI	Through wiring	Wire type	Dimensions (H/W/T/S) [mm]	Index
47	4000	7850	MAT				1152/85/80	>> 942518
47	4000	7850	MAT		LS2	5x2,5	1152/85/80	>> 942594
47	4000	7850	MAT		LS2	5x1,5	1152/85/80	>> 942587
47	4000	7850	MAT	yes			1152/85/80	>> 942570

TYTAN 2 LED CHEMO 69W

Nominal power [W]	Colour temperature [K]	Luminous flux [lm]*	Diffuser type	DIMM DALI	Through wiring	Wire type	Dimensions (H/W/T/S) [mm]	Index
69	4000	11300	MAT				1432/85/80	>> 942532
69	4000	11300	MAT		LS2	5x2,5	1432/85/80	>> 942624
69	4000	11300	MAT		LS2	5x1,5	1432/85/80	>> 942617
69	4000	11300	MAT	yes			1432/85/80	>> 942600

TYTAN 2 LED CHEMO

GENERAL CARD

ACCESSORIES AVAILABLE

index	Name
60000006	M16 stuffing box plug various PA black M-16 - BPM-21
908231	TYTAN LED - holder
80000279	Gland, beam, Codar, soft polyvinyl chloride (PVC-P), gray

TYTAN 2 LED HALL

GENERAL CARD



TECHNICAL PARAMETERS

Ingress protection:	IP66
Impact resistance:	IK09
Rated power of the luminaire [W]*:	58.00; 72.00
Luminous flux [lm]*:	8200 - 10400
Colour temperature [K]:	4000
Colour rendering index:	>80
SDCM:	≤ 3
Material of the body:	PC
Colour of the body:	grey
Diffuser material:	PC
Diffuser type:	transparent
Optics material:	PMMA
Mounting version:	surface, suspended
Dimensions (H/W/T/S) [mm]:	1152/85/80; 1432/85/80
Warranty [years]:	5

CHARACTERISTICS

TYTAN 2 LED HALL is a fitting from NEXT GEN line, which is a new generation of fittings in LED technology. The fitting, designed from scratch, allows new solutions improving the light distribution and temperature balance. Branded LED diodes and new LED modules have influence on a very high luminous efficacy: up to 144 lm/W. It guarantees the best required lighting level and energy saving up to 68%. The solution based on integration of the diffuser and LED module is applied in the fitting. The fitting has a lot of facilities making the mounting easier and faster: the system of diffuser suspension, adjustable mounting brackets ensuring the mounting tolerance +/-50mm. Standard equipment of the fitting: clips made of stainless steel (INOX).

APPLICATION

The multifunctional LED luminaires is designed for use in areas with high requirements for dust and water resistance. Thanks to its narrow distribution, it is recommended for high storage warehouses. Three dedicated beam angles allow it to be adapted to existing needs. The luminaires is ideal for new lighting applications as well as the replacement of traditional fluorescent fixtures with energy-efficient LED solutions. Its design is suitable for surface and pendant mounting.

TYTAN 2 LED HALL

GENERAL CARD

AVAILABLE VERSIONS



Click index >>, to see details

TYTAN 2 LED HALL 1152/85/80mm

Rated power of the luminaire [W]*	Colour temperature [K]	Luminous flux [lm]*	Beam angle [°]	Through wiring	DIMM DALI	Dimensions (H/W/T/S) [mm]	Index
58	4000	8200	60			1152/85/80	>> 367014
58	4000	8200	60		yes	1152/85/80	>> 367045
58	4000	8200	60	5x2,5		1152/85/80	>> 367427
58	4000	8200	60	5x1,5		1152/85/80	>> 367076
58	4000	8250	70			1152/85/80	>> 367021
58	4000	8250	70		yes	1152/85/80	>> 367052
58	4000	8250	70	5x2,5		1152/85/80	>> 367434
58	4000	8250	70	5x1,5		1152/85/80	>> 367083
58	4000	8350	90			1152/85/80	>> 367038
58	4000	8350	90		yes	1152/85/80	>> 367069
58	4000	8350	90	5x2,5		1152/85/80	>> 367441
58	4000	8350	90	5x1,5		1152/85/80	>> 367090

TYTAN 2 LED HALL 1432/85/80mm

Rated power of the luminaire [W]*	Colour temperature [K]	Luminous flux [lm]*	Beam angle [°]	Through wiring	DIMM DALI	Dimensions (H/W/T/S) [mm]	Index
72	4000	10200	60			1432/85/80	>> 367137
72	4000	10200	60		yes	1432/85/80	>> 367168
72	4000	10200	60	5x2,5		1432/85/80	>> 367458
72	4000	10200	60	5x1,5		1432/85/80	>> 367199
72	4000	10300	70			1432/85/80	>> 367144
72	4000	10300	70		yes	1432/85/80	>> 367175
72	4000	10300	70	5x2,5		1432/85/80	>> 367465
72	4000	10300	70	5x1,5		1432/85/80	>> 367205
72	4000	10400	90			1432/85/80	>> 367151
72	4000	10400	90		yes	1432/85/80	>> 367182
72	4000	10400	90	5x2,5		1432/85/80	>> 367472
72	4000	10400	90	5x1,5		1432/85/80	>> 367212

TYTAN 2 LED HALL

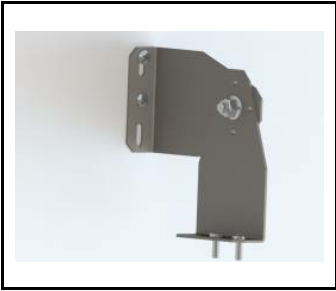
GENERAL CARD

ACCESSORIES AVAILABLE

index	Name
908200	TYTAN LED, ATLAS LED, INDUSTRY LED - adjustable handle (set of 2)
907913	TYTAN LED, ATLAS LED - protective grid 1152mm
907920	TYTAN LED, ATLAS LED - protective grid 1432mm
16000507	Breathable gland gray M20*1.5 IP68
60000006	M16 stuffing box plug various PA black M-16 - BPM-21
367106	TYTAN 2 LED HALL 1150mm 8200lm 840 60D - lighting module
367113	TYTAN 2 LED HALL 1150mm 8250lm 840 70D - lighting module
367120	TYTAN 2 LED HALL 1150mm 8350lm 840 90D - lighting module
367229	TYTAN 2 LED HALL 1450mm 10200lm 840 60D - lighting module
367236	TYTAN 2 LED HALL 1450mm 10300lm 840 70D - lighting module
367243	TYTAN 2 LED HALL 1450mm 10400lm 840 90D - lighting module
908231	TYTAN LED - holder
80000279	Gland, beam, Codar, soft polyvinyl chloride (PVC-P), gray

TYTAN 2 LED HALL

GENERAL CARD



TYTAN LED, ATLAS LED, INDUSTRY LED - adjustable handle (set of 2) (908200)



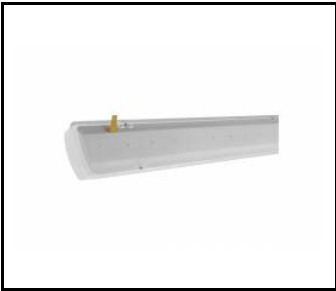
TYTAN LED, ATLAS LED - protective grid 1152mm (907913)



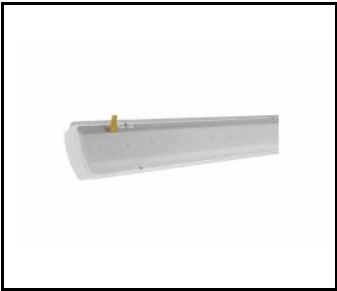
TYTAN LED, ATLAS LED - protective grid 1432mm (907920)



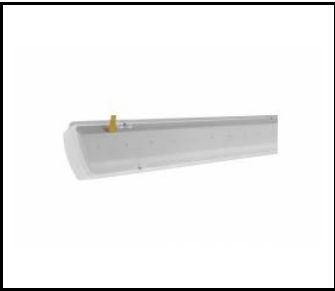
Breathable gland gray M20*1.5 IP68 (16000507)



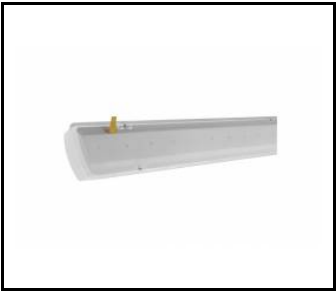
TYTAN 2 LED HALL 1150mm 8200lm 840 60D - lighting module (367106)



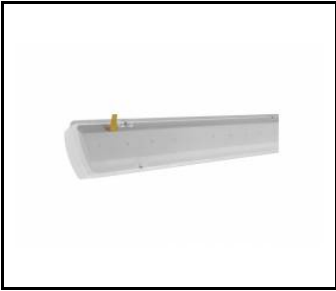
TYTAN 2 LED HALL 1150mm 8250lm 840 70D - lighting module (367113)



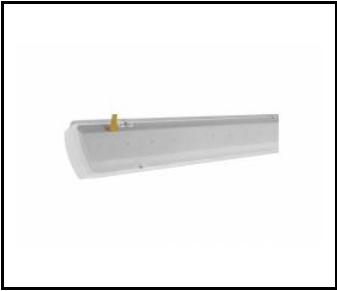
TYTAN 2 LED HALL 1150mm 8350lm 840 90D - lighting module (367120)



TYTAN 2 LED HALL 1450mm 10200lm 840 60D - lighting module (367229)



TYTAN 2 LED HALL 1450mm 10300lm 840 70D - lighting module (367236)



TYTAN 2 LED HALL 1450mm 10400lm 840 90D - lighting module (367243)

TYTAN 2 LED 24-48V

GENERAL CARD



TECHNICAL PARAMETERS

Ingress protection:	IP66
Impact resistance:	IK09
Nominal power [W]:	19.00
Luminous flux [lm]*:	2750
Colour temperature [K]:	4000
Material of the body:	PC
Colour of the body:	grey
Diffuser type:	MAT
Mounting version:	surface, suspended
Supply voltage [V]:	24 - 48
Dimensions (H/W/T/S) [mm]:	1152/80/85
Warranty [years]:	2

CHARACTERISTICS

TYTAN 2 LED is a fitting from NEXT GEN line, which is a new generation of fittings in LED technology. The fitting, designed from scratch, allows new solutions improving the light distribution and temperature balance. Branded LED diodes and new LED modules have influence on a very high luminous efficacy: 123 lm/W. It guarantees the best required lighting level and energy saving up to 68%. The solution based on integration of the diffuser and LED module is applied in the fitting. The fitting has a lot of facilities making the mounting easier and faster: the system of diffuser suspension, adjustable mounting brackets ensuring the mounting tolerance +/-40mm. Standard equipment of the fitting: clips made of stainless steel (INOX).

APPLICATION

The multifunctional LED lamp is designed for use in areas with high requirements for dust and water resistance. Especially recommended for lighting public facilities, including hospitals, educational facilities, halls, garages, passages, warehouses, shops, food industry, commercial and industrial facilities (factories, laboratories), warehouses, parking lots (underground and multi-level), sports stadiums, transport terminals and underground passages. The luminaire is ideal for new lighting applications as well as replacing traditional fluorescent luminaires with energy-saving LED solutions. Its design is adapted for surface and suspended mounting.

TYTAN 2 LED 24-48V

GENERAL CARD

AVAILABLE VERSIONS



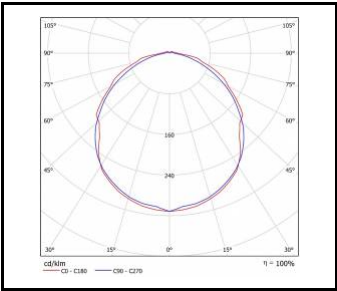
Click index >>, to see details

Nominal power [W]	Colour temperature [K]	Luminous flux [lm]*	Diffuser type	Index
19	4000	2750	MAT	>> 355165

TYTAN 2 LED 24-48V

GENERAL CARD

LUMINOUS INTENSITY DISTRIB. CURVE



TYTAN 2 LED

TYTAN 2 LED 24-48V

GENERAL CARD

ACCESSORIES AVAILABLE

index	Name
60000006	M16 stuffing box plug various PA black M-16 - BPM-21
908231	TYTAN LED - holder
80000279	Gland, beam, Codar, soft polyvinyl chloride (PVC-P), gray

TYTAN 2 LED BASIC

GENERAL CARD



TECHNICAL PARAMETERS

Ingress protection:	IP66
Impact resistance:	IK09
Nominal power [W]:	30.00 - 75.00
Luminous flux [lm]*:	3900 - 10600
Colour temperature [K]:	4000
Material of the body:	PC
Colour of the body:	RAL7035; grey
Diffuser material:	PC
Diffuser type:	MAT
Mounting version:	surface, suspended
Dimensions (H/W/T/S) [mm]:	1152/85/80; 1432/85/80
Warranty [years]:	5
Optics material:	PC

CHARACTERISTICS

TYTAN 2 LED BASIC is a basic line of lighting fixtures which provides an excellent alternative to traditional fluorescent lamps. The lighting fixture has been designed from scratch. TYTAN 2 LED BASIC includes new solutions which improve the light distribution and the temperature balance. The new LED panels ensure high luminous efficacy of <143 lm/W. This provides the required level of lighting along with significant energy savings. The lighting fixture includes many improvements which facilitate and speed up the installation process: a solution involving the integration of the diffuser with the LED panel, a diffuser suspension system, and adjustable mounting brackets with an installation tolerance of +/-40 mm. As a standard, the fixture is equipped with robust clips made of stainless steel (INOX). The body of the fixture and the diffuser are resistant to UV radiation.

APPLICATION

The multifunctional LED lamp is designed for use in areas with high requirements for dust and water resistance. Especially recommended for lighting public facilities, including hospitals, educational facilities, halls, garages, passages, warehouses, shops, food industry, commercial and industrial facilities (factories, laboratories), warehouses, parking lots (underground and multi-level), sports stadiums, transport terminals and underground passages. The luminaire is ideal for new lighting applications as well as replacing traditional fluorescent luminaires with energy-saving LED solutions. Its design is adapted for surface and suspended mounting.

TYTAN 2 LED BASIC

GENERAL CARD

AVAILABLE VERSIONS



Click index >>, to see details

TYTAN 2 LED BASIC 30W

Nominal power [W]	Colour temperature [K]	Luminous flux [lm]*	Motion sensor	DIMM DALI	Through wiring	Emergency lighting [h]	Dimensions (H/W/T/S) [mm]	Index
30	4000	3900					1152/85/80	>> 908736
30	4000	3900				3	1152/85/80	>> 909580
30	4000	3900			LS2		1152/85/80	>> 909504
30	4000	3900	yes				1152/85/80	>> 909627
30	4000	3900		yes			1152/85/80	>> 909542

TYTAN 2 LED BASIC 43W

Nominal power [W]	Colour temperature [K]	Luminous flux [lm]*	Motion sensor	DIMM DALI	Through wiring	Emergency lighting [h]	Dimensions (H/W/T/S) [mm]	Index
43	4000	5850					1152/85/80	>> 908743
43	4000	5850				3	1152/85/80	>> 909597
43	4000	5850			LS2		1152/85/80	>> 909511
43	4000	5850	yes				1152/85/80	>> 909634
43	4000	5850		yes			1152/85/80	>> 909559

TYTAN 2 LED BASIC 44W

Nominal power [W]	Colour temperature [K]	Luminous flux [lm]*	Motion sensor	DIMM DALI	Through wiring	Emergency lighting [h]	Dimensions (H/W/T/S) [mm]	Index
44	4000	6250					1432/85/80	>> 909900
44	4000	6250				3	1432/85/80	>> 909917
44	4000	6250			LS2		1432/85/80	>> 909931
44	4000	6250	yes				1432/85/80	>> 909948
44	4000	6250		yes			1432/85/80	>> 909924

TYTAN 2 LED BASIC 50W

Nominal power [W]	Colour temperature [K]	Luminous flux [lm]*	Motion sensor	DIMM DALI	Through wiring	Emergency lighting [h]	Dimensions (H/W/T/S) [mm]	Index
50	4000	6800					1152/85/80	>> 908750
50	4000	6800				3	1152/85/80	>> 909603
50	4000	6800			LS2		1152/85/80	>> 909528
50	4000	6800	yes				1152/85/80	>> 909641
50	4000	6800		yes			1152/85/80	>> 909566

TYTAN 2 LED BASIC 52W

Nominal power [W]	Colour temperature [K]	Luminous flux [lm]*	Motion sensor	DIMM DALI	Through wiring	Emergency lighting [h]	Dimensions (H/W/T/S) [mm]	Index
52	4000	7100					1432/85/80	>> 911552

TYTAN 2 LED BASIC

GENERAL CARD

Nominal power [W]	Colour temperature [K]	Luminous flux [lm]*	Motion sensor	DIMM DALI	Through wiring	Emergency lighting [h]	Dimensions (H/W/T/S) [mm]	Index
52	4000	7100	yes				1432/85/80	>> 911590
52	4000	7100				3	1432/85/80	>> 911569
52	4000	7100			LS2		1432/85/80	>> 911583
52	4000	7100		yes			1432/85/80	>> 911576

TYTAN 2 LED BASIC 72W

Nominal power [W]	Colour temperature [K]	Luminous flux [lm]*	Motion sensor	DIMM DALI	Through wiring	Emergency lighting [h]	Dimensions (H/W/T/S) [mm]	Index
72	4000	10600					1432/85/80	>> 912504
72	4000	10600				3	1432/85/80	>> 912535
72	4000	10600			LS2		1432/85/80	>> 912559
72	4000	10600			LS2		1432/85/80	>> 912511
72	4000	10600	yes				1432/85/80	>> 912542
72	4000	10600		yes			1432/85/80	>> 912528

TYTAN 2 LED BASIC 75W

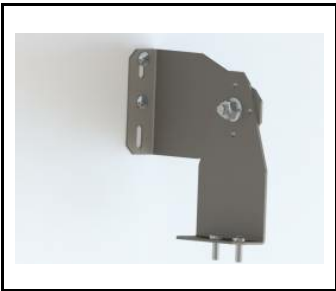
Nominal power [W]	Colour temperature [K]	Luminous flux [lm]*	Motion sensor	DIMM DALI	Through wiring	Emergency lighting [h]	Dimensions (H/W/T/S) [mm]	Index
75	4000	10000				3	1432/85/80	>> 909610
75	4000	10000			LS2		1432/85/80	>> 909535
75	4000	10000	yes				1432/85/80	>> 909658
75	4000	10000					1432/85/80	>> 908767
75	4000	10000		yes			1432/85/80	>> 909573

TYTAN 2 LED BASIC

GENERAL CARD

ACCESSORIES AVAILABLE

index	Name
908200	TYTAN LED, ATLAS LED, INDUSTRY LED - adjustable handle (set of 2)
907920	TYTAN LED, ATLAS LED - protective grid 1432mm
16000507	Breathable gland gray M20*1.5 IP68
60000006	M16 stuffing box plug various PA black M-16 - BPM-21



TYTAN LED, ATLAS LED, INDUSTRY LED - adjustable handle (set of 2) (908200)



TYTAN LED, ATLAS LED - protective grid 1432mm (907920)



Breathable gland gray M20*1.5 IP68 (16000507)

TYTAN 2 LED BASIC MULTI

GENERAL CARD



TECHNICAL PARAMETERS

Ingress protection:	IP66
Impact resistance:	IK09
Rated power [W] - range:	19/23/28/33 - 34/43/52/62
Luminous flux of the luminaire [lm] - range:	2500/3000/3450/3850 - 5050/6200/7250/8250
Colour temperature [K]:	4000
Material of the body:	PC
Colour of the body:	RAL7035; grey
Diffuser type:	MAT
Mounting version:	surface, suspended
Dimensions (H/W/T/S) [mm]:	1152/85/80; 1432/85/80
Warranty [years]:	2 / 0.5 (battery); 5

CHARACTERISTICS

TYTAN 2 LED BASIC MULTI is a basic line of lighting fixtures that provides an excellent alternative to traditional fluorescent lamps. The lighting fixture has been designed from scratch. TYTAN 2 LED BASIC MULTI includes new solutions which improve the light distribution and the temperature balance. The new LED panels ensure high luminous efficacy up to 158 lm/W. This provides the required level of lighting along with significant energy savings. The lighting fixture includes many improvements which facilitate and speed up the installation process: a solution involving the integration of the diffuser with the LED panel, a diffuser suspension system, and adjustable mounting brackets with an installation tolerance of +/-50 mm. As a standard, the fixture is equipped with robust clips made of stainless steel (INOX). The body of the fixture and the diffuser are resistant to UV radiation. The MULTI luminaire version allows individual configuration: thanks to the built-in microswitch, it is possible to choose one of four settings (rated power of the luminaire [W]/luminous flux of the fitting [lm]):

19W-33W - 1. 19W/2500 lm; 2. 23W/3000 lm; 3. 28W/3450 lm; 4. 33W/3850 lm;
23W-40W - 1. 23W/3050 lm; 2. 29W/3650 lm; 3. 34W/4200 lm; 4. 40W/4750 lm;
26W-46W - 1. 26W/4050 lm; 2. 32W/4950 lm; 3. 39W/5800 lm; 4. 46W/6600 lm;
30W-53W - 1. 30W/4200 lm; 2. 38W/5000 lm; 3. 46W/5750 lm; 4. 53W/6300 lm;
32W-55W - 1. 32W/5050 lm; 2. 40W/6200 lm; 3. 47W/7250 lm; 4. 55W/8250 lm;
34W-62W - 1. 34W/4800 lm; 2. 43W/5750 lm; 3. 52W/6550 lm; 4. 62W/7300 lm.

APPLICATION

The multifunctional LED lamp is designed for use in areas with high requirements for dust and water resistance. Especially recommended for lighting public facilities, including hospitals, educational facilities, halls, garages, passages, warehouses, shops, food industry, commercial and industrial facilities (factories, laboratories), warehouses, parking lots (underground and multi-level) , sports stadiums, transport terminals and underground passages. The luminaire is ideal for new lighting applications as well as replacing traditional fluorescent luminaires with energy-saving LED solutions. Its design is adapted for surface and suspended mounting.

TYTAN 2 LED BASIC MULTI

GENERAL CARD

AVAILABLE VERSIONS



Click index >>, to see details

TYTAN 2 LED BASIC MULTI 2500/3000/3450/3850lm

Rated power [W] - range	Colour temperature [K]	Luminous flux of the luminaire [lm] - range	Motion sensor	Emergency lighting [h]	Through wiring	Dimensions (H/W/T/S) [mm]	Index
19/23/28/33	4000	2500/3000/3450/3850				1152/85/80	>> 940842
19/23/28/33	4000	2500/3000/3450/3850		3		1152/85/80	>> 940873
19/23/28/33	4000	2500/3000/3450/3850			LS2	1152/85/80	>> 940866
19/23/28/33	4000	2500/3000/3450/3850	yes			1152/85/80	>> 940859

TYTAN 2 LED BASIC MULTI 3050/3650/4200/4750lm

Rated power [W] - range	Colour temperature [K]	Luminous flux of the luminaire [lm] - range	Motion sensor	Emergency lighting [h]	Through wiring	Dimensions (H/W/T/S) [mm]	Index
23/29/34/40	4000	3050/3650/4200/4750				1432/85/80	>> 940965
23/29/34/40	4000	3050/3650/4200/4750		3		1432/85/80	>> 940996
23/29/34/40	4000	3050/3650/4200/4750			LS2	1432/85/80	>> 940989
23/29/34/40	4000	3050/3650/4200/4750	yes			1432/85/80	>> 940972

TYTAN 2 LED BASIC MULTI 4050/4950/5800/6600lm

Rated power [W] - range	Colour temperature [K]	Luminous flux of the luminaire [lm] - range	Motion sensor	Emergency lighting [h]	Through wiring	Dimensions (H/W/T/S) [mm]	Index
26/32/39/46	4000	4050/4950/5800/6600				1152/85/80	>> 912726
26/32/39/46	4000	4050/4950/5800/6600		3		1152/85/80	>> 912764
26/32/39/46	4000	4050/4950/5800/6600			LS2	1152/85/80	>> 912740
26/32/39/46	4000	4050/4950/5800/6600			LS2	1152/85/80	>> 912757
26/32/39/46	4000	4050/4950/5800/6600	yes			1152/85/80	>> 912733

TYTAN 2 LED BASIC MULTI 4200/5000/5750/6300lm

Rated power [W] - range	Colour temperature [K]	Luminous flux of the luminaire [lm] - range	Motion sensor	Emergency lighting [h]	Through wiring	Dimensions (H/W/T/S) [mm]	Index
30/38/46/53	4000	4200/5000/5750/6300				1152/85/80	>> 940880
30/38/46/53	4000	4200/5000/5750/6300		3		1152/85/80	>> 940910
30/38/46/53	4000	4200/5000/5750/6300			LS2	1152/85/80	>> 940903
30/38/46/53	4000	4200/5000/5750/6300	yes			1152/85/80	>> 940897

TYTAN 2 LED BASIC MULTI 4800/5750/6550/7300lm

Rated power [W] - range	Colour temperature [K]	Luminous flux of the luminaire [lm] - range	Motion sensor	Emergency lighting [h]	Through wiring	Dimensions (H/W/T/S) [mm]	Index
34/43/52/62	4000	4800/5750/6550/7300				1152/85/80	>> 940927
34/43/52/62	4000	4800/5750/6550/7300		3		1152/85/80	>> 940958
34/43/52/62	4000	4800/5750/6550/7300			LS2	1152/85/80	>> 940941
34/43/52/62	4000	4800/5750/6550/7300	yes			1152/85/80	>> 940934

TYTAN 2 LED BASIC MULTI

GENERAL CARD

TYTAN 2 LED BASIC MULTI 5050/6200/7250/8250lm

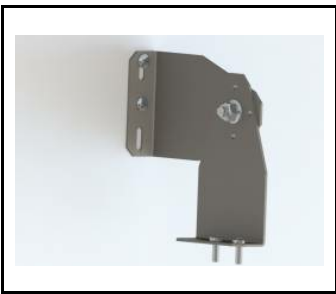
Rated power [W] - range	Colour temperature [K]	Luminous flux of the luminaire [lm] - range	Motion sensor	Emergency lighting [h]	Through wiring	Dimensions (H/W/T/S) [mm]	Index
32/40/47/55	4000	5050/6200/7250/8250				1432/85/80	>> 912566
32/40/47/55	4000	5050/6200/7250/8250		3		1432/85/80	>> 912603
32/40/47/55	4000	5050/6200/7250/8250			LS2	1432/85/80	>> 912580
32/40/47/55	4000	5050/6200/7250/8250			LS2	1432/85/80	>> 912597
32/40/47/55	4000	5050/6200/7250/8250	yes			1432/85/80	>> 912573

TYTAN 2 LED BASIC MULTI

GENERAL CARD

ACCESSORIES AVAILABLE

index	Name
908200	TYTAN LED, ATLAS LED, INDUSTRY LED - adjustable handle (set of 2)
907913	TYTAN LED, ATLAS LED - protective grid 1152mm
907920	TYTAN LED, ATLAS LED - protective grid 1432mm
16000507	Breathable gland gray M20*1.5 IP68
60000006	M16 stuffing box plug various PA black M-16 - BPM-21
80000378	Cable gland PG 13.5 Titanium PA 6.6 gray with nut
908231	TYTAN LED - holder
80000279	Gland, beam, Codar, soft polyvinyl chloride (PVC-P), gray



TYTAN LED, ATLAS LED, INDUSTRY LED - adjustable handle (set of 2) (908200)



TYTAN LED, ATLAS LED - protective grid 1152mm (907913)



TYTAN LED, ATLAS LED - protective grid 1432mm (907920)



Breathable gland gray M20*1.5 IP68 (16000507)



TECHNICAL PARAMETERS

Ingress protection:	IP65
Impact resistance:	IK09
Nominal power [W]:	36.00 - 57.00
Luminous flux [lm]*:	4400 - 7320
Colour temperature [K]:	4000
Colour rendering index:	>80
SDCM:	≤ 5
Energy efficiency class:	D; E
Material of the body:	PC
Diffuser material:	PC
Diffuser type:	MAT; transparent
Mounting version:	surface, suspended
Dimensions (H/W/T/S) [mm]:	1152/85/80; 1432/85/80
Warranty [years]:	5

CHARACTERISTICS

ATLAS LED is a fitting with very high IP65 tightness and IK09 mechanical resistance. The solution based on integration of the diffuser and LED module is applied in the fitting. The fitting has a lot of facilities making the mounting easier and faster: the system of diffuser suspension, adjustable mounting brackets ensuring the mounting tolerance +/-50mm. Standard equipment of the fitting: clips made of stainless steel (INOX).

APPLICATION

A multipurpose LED fitting intended for using in the areas where high dust and moisture resistance is required. Highly recommended to be used in industrial buildings, warehouses, car parks (underground and multilevel), sports stadiums, transport terminals and underground passageways. Its construction is intended both for surface and suspended mounting. Adjustable mounting brackets (the mounting tolerance +/-40mm). Suspended diffuser integrated with LED modules. The luminaire is intended for general areas inside buildings – store rooms and storage rack areas as well as cold stores included in tables 5.4 and 5.5 of the EN12464 standard; for indoor traffic zones included in table 5.1 of the EN12464 standard and for parking areas and as lighting of railway installations included in table 5.34 and 5.53 of the EN12464 standard, excluding ticket and luggage offices, counters, waiting rooms, entrance halls and lounges.

ATLAS LED

GENERAL CARD

AVAILABLE VERSIONS



Click index >>, to see details

ATLAS LED 36W

Nominal power [W]	Colour temperature [K]	Luminous flux [lm]*	Diffuser type	Dimensions (H/W/T/S) [mm]	Energy efficiency class	Index
36	4000	4400	MAT	1152/85/80	E	>> 952043
36	4000	4500	transparent	1152/85/80	E	>> 952005

ATLAS LED 44W

Nominal power [W]	Colour temperature [K]	Luminous flux [lm]*	Diffuser type	Dimensions (H/W/T/S) [mm]	Energy efficiency class	Index
44	4000	5620	MAT	1152/85/80	E	>> 657399
44	4000	5850	transparent	1152/85/80	D	>> 657351

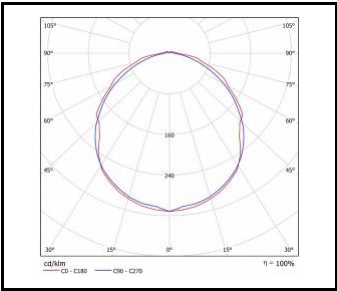
ATLAS LED 47W

Nominal power [W]	Colour temperature [K]	Luminous flux [lm]*	Diffuser type	Dimensions (H/W/T/S) [mm]	Energy efficiency class	Index
47	4000	6000	transparent	1432/85/80	E	>> 952012

ATLAS LED 57W

Nominal power [W]	Colour temperature [K]	Luminous flux [lm]*	Diffuser type	Dimensions (H/W/T/S) [mm]	Energy efficiency class	Index
57	4000	7020	MAT	1432/85/80	E	>> 657405
57	4000	7320	transparent	1432/85/80	E	>> 657368

LUMINOUS INTENSITY DISTRIB. CURVE



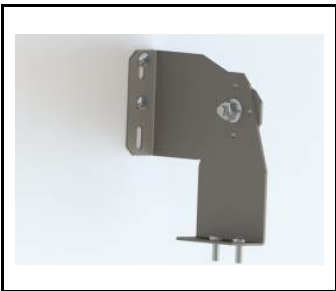
ATLAS LED

ACCESSORIES AVAILABLE

index	Name
908200	TYTAN LED, ATLAS LED, INDUSTRY LED - adjustable handle (set of 2)
907913	TYTAN LED, ATLAS LED - protective grid 1152mm
907920	TYTAN LED, ATLAS LED - protective grid 1432mm
952029	ATLAS LED 1150mm 4500lm 840 - lighting module
952036	ATLAS LED 1450mm 6000lm 840 - lighting module
952074	ATLAS LED 1450mm 5900lm 840 MAT - lighting module
952067	ATLAS LED 1150mm 4400lm 840 MAT - lighting module
16000507	Breathable gland gray M20*1.5 IP68
60000006	M16 stuffing box plug various PA black M-16 - BPM-21
80000378	Cable gland PG 13.5 Titanium PA 6.6 gray with nut
657412	ATLAS LED 1150mm 5620lm 840 MAT - light module
657375	ATLAS LED 1150mm 5850lm 840 - light module
657429	ATLAS LED 1450mm 7020lm 840 MAT - light module
657382	ATLAS LED 1450mm 7320lm 840 - light module

ATLAS LED

GENERAL CARD



TYTAN LED, ATLAS LED, INDUSTRY LED - adjustable handle (set of 2) (908200)



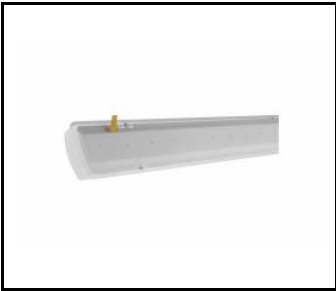
TYTAN LED, ATLAS LED - protective grid 1152mm (907913)



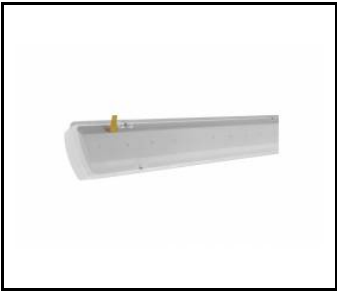
TYTAN LED, ATLAS LED - protective grid 1432mm (907920)



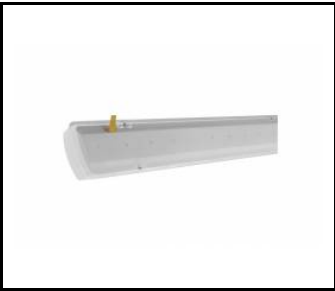
ATLAS LED 1150mm 4500lm 840 - lighting module (952029)



ATLAS LED 1450mm 6000lm 840 - lighting module (952036)



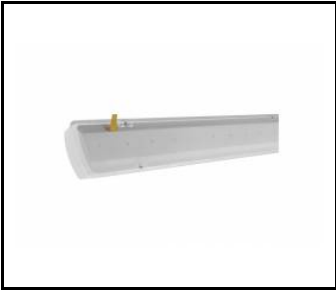
ATLAS LED 1450mm 5900lm 840 MAT - lighting module (952074)



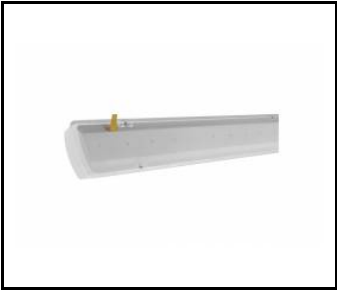
ATLAS LED 1150mm 4400lm 840 MAT - lighting module (952067)



Breathable gland gray M20*1.5 IP68 (16000507)



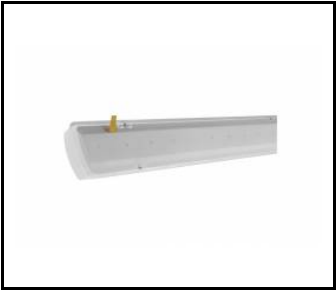
ATLAS LED 1150mm 5620lm 840 MAT - light module (657412)



ATLAS LED 1150mm 5850lm 840 - light module (657375)



ATLAS LED 1450mm 7020lm 840 MAT - light module (657429)



ATLAS LED 1450mm 7320lm 840 - light module (657382)

INDUSTRY IP66 LED

GENERAL CARD



TECHNICAL PARAMETERS

Ingress protection:	IP66
Impact resistance:	IK08
Nominal power [W]:	13.00 - 212.00
Luminous flux [lm]*:	2150 - 34000
Colour temperature [K]:	4000
Colour rendering index:	>80
SDCM:	≤ 3
Energy efficiency class:	B; C; D
Material of the body:	aluminium
Diffuser material:	glass
Diffuser type:	transparent
Mounting version:	surface, suspended
Dimensions (H/W/T/S) [mm]:	1150/63/55; 1250/104/135; 1450/104/135; 1450/63/55; 570/63/55
Warranty [years]:	5
Optics material:	PMMA

CHARACTERISTICS

INDUSTRY IP66 LED is a hermetic beam from the NEXT GEN line, which is a new generation of lamps dedicated to LED technology. The body, made from scratch, made of aluminum profile and subjected to anodization process, provides the luminaire with strength and solidity, and the narrow side profile allows installation in hard to reach places. LEDs from a reputable manufacturer and new LED modules have an impact on very high luminous efficacy: up to 163 lm / W. This guarantees that the required lighting level is achieved and that significant energy savings are achieved. The lampshade is made of UV resistant tempered glass. The combination of materials (aluminum and toughened glass) and a non-dismantled construction with an external connector provides the luminaire with high resistance to harsh environmental conditions.

Suitable for surface and suspended mounting.

Options: any RAL color; diffuser made of PC or PMMA.

APPLICATION

The multi-purpose LED luminaire has been designed for use in areas requiring high dust and water resistance. It is especially recommended for use in rooms intended for medical and laboratory purposes as well as in industrial premises.

INDUSTRY IP66 LED

GENERAL CARD

AVAILABLE VERSIONS



Click index >>, to see details

INDUSTRY IP66 LED 13W

Nominal power [W]	Colour temperature [K]	Luminous flux [lm]*	Beam angle [°]	DIMM DALI	Dimensions (H/W/T/S) [mm]	Energy efficiency class	Index
13	4000	2150	110		570/63/55	C	>> 552762
13	4000	2150	110	yes	570/63/55	C	>> 552779

INDUSTRY IP66 LED 23W

Nominal power [W]	Colour temperature [K]	Luminous flux [lm]*	Beam angle [°]	DIMM DALI	Dimensions (H/W/T/S) [mm]	Energy efficiency class	Index
23	4000	3500	110		570/63/55	C	>> 552786
23	4000	3500	110	yes	570/63/55	C	>> 552793

INDUSTRY IP66 LED 26W

Nominal power [W]	Colour temperature [K]	Luminous flux [lm]*	Beam angle [°]	DIMM DALI	Dimensions (H/W/T/S) [mm]	Energy efficiency class	Index
26	4000	4000	50		1150/63/55	C	>> 663536
26	4000	4100	50	yes	1150/63/55	C	>> 663710
26	4000	4200	80		1150/63/55	C	>> 663550
26	4000	4200	70		1150/63/55	C	>> 663543
26	4000	4300	80	yes	1150/63/55	C	>> 663734
26	4000	4300	70	yes	1150/63/55	C	>> 663727
26	4000	4500	110		1150/63/55	B	>> 552007
26	4000	4500	110	yes	1150/63/55	B	>> 552076

INDUSTRY IP66 LED 46W

Nominal power [W]	Colour temperature [K]	Luminous flux [lm]*	Beam angle [°]	DIMM DALI	Dimensions (H/W/T/S) [mm]	Energy efficiency class	Index
46	4000	6900	50		1150/63/55	C	>> 663567
46	4000	6900	50	yes	1150/63/55	C	>> 663741
46	4000	7200	70		1150/63/55	C	>> 663574
46	4000	7200	70	yes	1150/63/55	C	>> 663758
46	4000	7250	80		1150/63/55	C	>> 663581
46	4000	7250	80	yes	1150/63/55	C	>> 663765
46	4000	7800	110		1150/63/55	C	>> 552014
46	4000	7800	110	yes	1150/63/55	C	>> 552083

INDUSTRY IP66 LED 67W

Nominal power [W]	Colour temperature [K]	Luminous flux [lm]*	Beam angle [°]	DIMM DALI	Dimensions (H/W/T/S) [mm]	Energy efficiency class	Index
67	4000	9700	50	yes	1150/63/55	D	>> 663772
67	4000	9700	50		1150/63/55	D	>> 663598
67	4000	10150	70		1150/63/55	C	>> 663604

INDUSTRY IP66 LED

GENERAL CARD

Nominal power [W]	Colour temperature [K]	Luminous flux [lm]*	Beam angle [°]	DIMM DALI	Dimensions (H/W/T/S) [mm]	Energy efficiency class	Index
67	4000	10150	70	yes	1150/63/55	C	>> 663789
67	4000	10200	80		1150/63/55	C	>> 663611
67	4000	10200	80	yes	1150/63/55	C	>> 663796
67	4000	11000	110		1150/63/55	C	>> 552021
67	4000	11000	110	yes	1150/63/55	C	>> 552090

INDUSTRY IP66 LED 83W

Nominal power [W]	Colour temperature [K]	Luminous flux [lm]*	Beam angle [°]	DIMM DALI	Dimensions (H/W/T/S) [mm]	Energy efficiency class	Index
83	4000	12150	50		1450/63/55	D	>> 663659
83	4000	12150	50	yes	1450/63/55	D	>> 663833
83	4000	12650	70		1450/63/55	C	>> 663666
83	4000	12650	70	yes	1450/63/55	C	>> 663840
83	4000	12750	80		1450/63/55	C	>> 663673
83	4000	12750	80	yes	1450/63/55	C	>> 663857
83	4000	13800	110		1450/63/55	C	>> 552052
83	4000	13800	110	yes	1450/63/55	C	>> 552120

INDUSTRY IP66 LED 85W

Nominal power [W]	Colour temperature [K]	Luminous flux [lm]*	Beam angle [°]	DIMM DALI	Dimensions (H/W/T/S) [mm]	Energy efficiency class	Index
85	4000	12050	50		1150/63/55	D	>> 663628
85	4000	12050	50	yes	1150/63/55	D	>> 663802
85	4000	12550	70		1150/63/55	C	>> 663635
85	4000	12550	70	yes	1150/63/55	C	>> 663819
85	4000	12650	80		1150/63/55	C	>> 663642
85	4000	12650	80	yes	1150/63/55	C	>> 663826
85	4000	13600	110		1150/63/55	C	>> 552038
85	4000	13600	110	yes	1150/63/55	C	>> 552106

INDUSTRY IP66 LED 106W

Nominal power [W]	Colour temperature [K]	Luminous flux [lm]*	Beam angle [°]	DIMM DALI	Dimensions (H/W/T/S) [mm]	Energy efficiency class	Index
106	4000	15050	50		1450/63/55	D	>> 663680
106	4000	15050	50	yes	1450/63/55	D	>> 663864
106	4000	15700	70		1450/63/55	C	>> 663697
106	4000	15700	70	yes	1450/63/55	C	>> 663871
106	4000	15850	80		1450/63/55	C	>> 663703
106	4000	15850	80	yes	1450/63/55	C	>> 663888
106	4000	17000	110		1450/63/55	C	>> 552069
106	4000	17000	110	yes	1450/63/55	C	>> 552137

INDUSTRY IP66 LED

GENERAL CARD

INDUSTRY IP66 LED 170W

Nominal power [W]	Colour temperature [K]	Luminous flux [lm]*	Beam angle [°]	DIMM DALI	Dimensions (H/W/T/S) [mm]	Energy efficiency class	Index
170	4000	23950	50		1250/104/135	D	>> 663956
170	4000	24950	70		1250/104/135	D	>> 663963
170	4000	25200	80		1250/104/135	D	>> 663970
170	4000	27200	110		1250/104/135	C	>> 552434

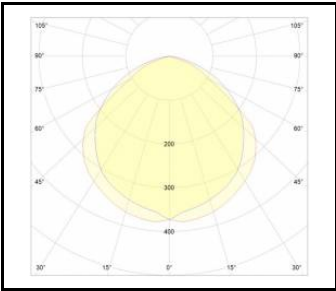
INDUSTRY IP66 LED 212W

Nominal power [W]	Colour temperature [K]	Luminous flux [lm]*	Beam angle [°]	DIMM DALI	Dimensions (H/W/T/S) [mm]	Energy efficiency class	Index
212	4000	29900	50		1450/104/135	D	>> 663987
212	4000	31200	70		1450/104/135	D	>> 663994
212	4000	31500	80		1450/104/135	D	>> 669194
212	4000	34000	110		1450/104/135	C	>> 552441

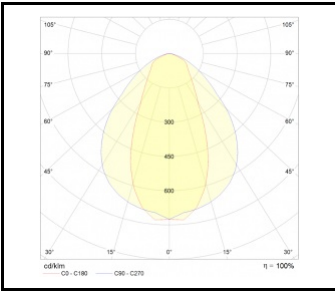
INDUSTRY IP66 LED

GENERAL CARD

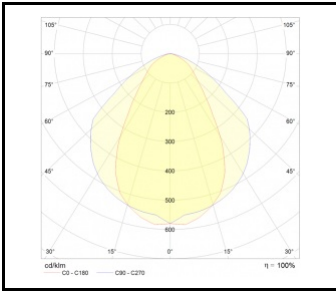
LUMINOUS INTENSITY DISTRIB. CURVE



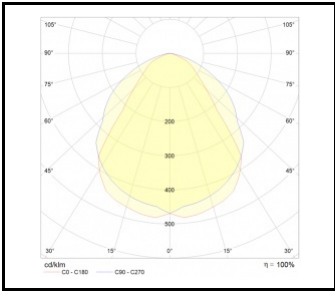
INDUSTRY IP66 LED 110°



INDUSTRY IP66 LED 50°



INDUSTRY IP66 LED 70°



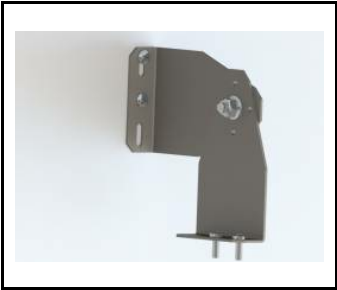
INDUSTRY IP66 LED 80°

INDUSTRY IP66 LED

GENERAL CARD

ACCESSORIES AVAILABLE

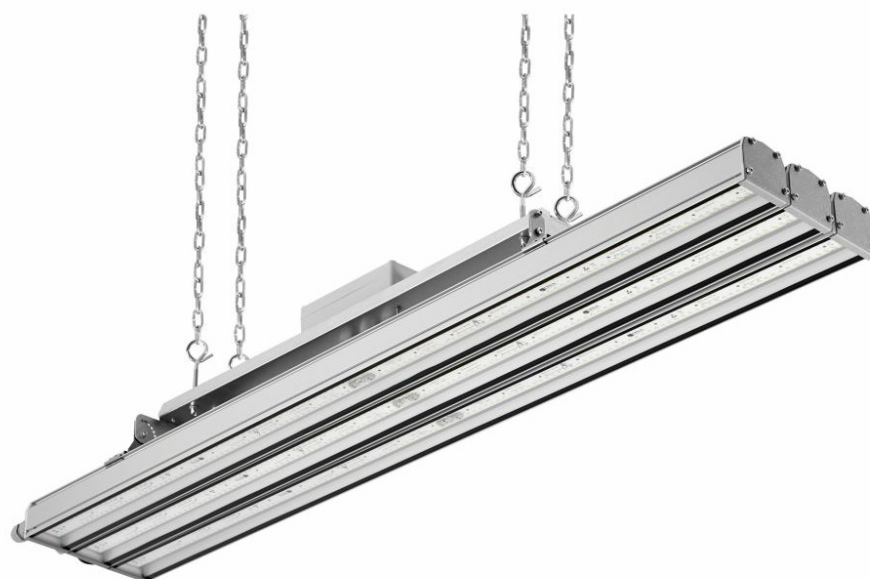
index	Name
908200	TYTAN LED, ATLAS LED, INDUSTRY LED - adjustable handle (set of 2)



TYTAN LED, ATLAS LED, INDUSTRY LED - adjustable handle (set of 2) (908200)

INDUSTRY IP66 LED MR

GENERAL CARD



TECHNICAL PARAMETERS

Ingress protection:	IP66
Impact resistance:	IK08
Nominal power [W]:	255.00; 318.00
Luminous flux [lm]*:	40800; 44900; 46800; 47250; 51000
Colour temperature [K]:	4000
Energy efficiency class:	C; D
Material of the body:	aluminium
Colour of the body:	grey
Diffuser material:	glass
Mounting version:	suspended
Dimensions (H/W/T/S) [mm]:	1150/205/125; 1450/205/125
Optics material:	PC
Warranty [years]:	5

CHARACTERISTICS

INDUSTRY IP66 LED MR is a lamp from the NEXT GEN line, which is a new generation of lamps dedicated to LED technology. The body, made from scratch, made of aluminum profile and subjected to anodization process, provides the lamp with strength and solidity, as well as steel sheet ensuring installation stability. LEDs from a reputable manufacturer and new LED modules have an impact on very high luminous efficacy: up to 148 lm / W. This guarantees that the required lighting level is achieved and that significant energy savings are achieved. The shade is made of UV resistant tempered glass. The combination of materials (aluminum and toughened glass) and a non-dismantled construction with an external connector provides the lamp with high resistance to harsh environmental conditions. The design of the lamp allows you to adjust the lighting angle of the two extreme modules, so there is the possibility of precise lighting of selected parts of the object. Suitable for suspended mounting. Options: any RAL color.

APPLICATION

The multi-purpose LED luminaire has been designed for use in areas requiring high dust and water resistance. It is especially recommended for use in rooms intended for medical and laboratory purposes as well as in industrial premises.

INDUSTRY IP66 LED MR

GENERAL CARD

AVAILABLE VERSIONS



Click index >>, to see details

INDUSTRY IP66 LED MR 255W

Nominal power [W]	Colour temperature [K]	Luminous flux [lm]*	Beam angle [°]	Dimensions (H/W/T/S) [mm]	Energy efficiency class	Index
255	4000	35900	50	1150/205/125	D	>> 663895
255	4000	37450	70	1150/205/125	D	>> 663901
255	4000	37800	80	1150/205/125	C	>> 663918
255	4000	40800	110	1150/205/125	C	>> 552618

INDUSTRY IP66 LED MR 318W

Nominal power [W]	Colour temperature [K]	Luminous flux [lm]*	Beam angle [°]	Dimensions (H/W/T/S) [mm]	Energy efficiency class	Index
318	4000	44900	50	1450/205/125	D	>> 663925
318	4000	46800	70	1450/205/125	D	>> 663932
318	4000	47250	80	1450/205/125	C	>> 663949
318	4000	51000	110	1450/205/125	C	>> 552625

INDUSTRY IP66 LED ENDURA

GENERAL CARD



TECHNICAL PARAMETERS

Ingress protection:	IP66
Nominal power [W]:	54.00; 62.00
Luminous flux [lm]*:	8900; 10500
Colour temperature [K]:	4000
Energy efficiency class:	B
Material of the body:	aluminium
Colour of the body:	grey
Diffuser material:	glass
Diffuser type:	transparent
Mounting version:	surface, suspended
Working temperature [°C]:	from -40 to +60
Dimensions (H/W/T/S) [mm]:	1150/63/55; 1450/63/55
Warranty [years]:	5

CHARACTERISTICS

INDUSTRY IP66 LED is a hermetic beam from the NEXT GEN line, which is a new generation of lamps dedicated to LED technology. The body, made from scratch, made of aluminum profile and subjected to anodization process, provides the luminaire with strength and solidity, and the narrow side profile allows installation in hard to reach places. LEDs from a reputable manufacturer and new LED modules have an impact on very high luminous efficacy: up to 161 lm / W. This guarantees that the required lighting level is achieved and that significant energy savings are achieved. The lampshade is made of UV resistant tempered glass. The combination of materials (aluminum and toughened glass) and a non-dismantled construction with an external connector provides the luminaire with high resistance to harsh environmental conditions. Suitable for surface and suspended mounting.

APPLICATION

The multi-purpose LED luminaire has been designed for use in areas requiring high dust and water resistance. It is especially recommended for use in rooms intended for medical and laboratory purposes as well as in industrial premises.

INDUSTRY IP66 LED ENDURA

GENERAL CARD

AVAILABLE VERSIONS



Click index >>, to see details

INDUSTRY IP66 LED ENDURA 54W

Nominal power [W]	Colour temperature [K]	Luminous flux [lm]*	Dimensions (H/W/T/S) [mm]	Energy efficiency class	Index
54	4000	8900	1150/63/55	B	>> 552472

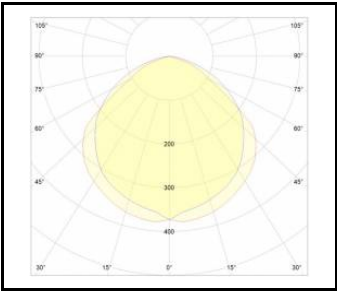
INDUSTRY IP66 LED ENDURA 62W

Nominal power [W]	Colour temperature [K]	Luminous flux [lm]*	Dimensions (H/W/T/S) [mm]	Energy efficiency class	Index
62	4000	10500	1450/63/55	B	>> 552489

INDUSTRY IP66 LED ENDURA

GENERAL CARD

LUMINOUS INTENSITY DISTRIB. CURVE



INDUSTRY IP66 LED 110°

MIMO 2 LED

GENERAL CARD



TECHNICAL PARAMETERS

Ingress protection:	IP66
Impact resistance:	IK06
Nominal power [W]:	13.00 - 30.00
Luminous flux [lm]*:	1900 - 5000
Colour temperature [K]:	3000; 4000
Colour rendering index:	>80
SDCM:	≤ 3
Energy efficiency class:	C; D
Material of the body:	PC
Diffuser material:	PC
Diffuser type:	MAT
Mounting version:	surface, suspended
Dimensions (H/W/T/S) [mm]:	1230/45/50; 1510/45/50; 570/45/50; 670/45/50
Warranty [years]:	5

CHARACTERISTICS

MIMO 2 LED represents the new generation of hermetic LED luminaires with very high IP66 tightness. The luminaire uses modern concepts to improve light distribution and temperature balance. Its design involved both proven solutions that affect high efficiency and durability, as well as efficient LED panels offering the best lighting level required and energy savings of up to 66%. The multilayer shade has been made of UV-resistant polycarbonate. Branded LED diodes and new LED modules have influence on a very high luminous efficacy: 150 lm/W. Optional: Through-Wiring series connection - LS2.

APPLICATION

The multifunctional LED luminaire is designed for use in areas with increased dust and humidity. It is particularly suitable for industrial conditions, car parks (underground and multi-storey ones), sports stadiums, warehouses, transport terminals and underground passages. The luminaire is used both in new applications, as well as in replacing traditional fluorescent luminaires with energy-saving LED solutions. Its design is adapted for surface and suspended installation using standard equipment.

MIMO 2 LED

GENERAL CARD

AVAILABLE VERSIONS



Click index >>, to see details

MIMO 2 LED 1230/45/50mm

Nominal power [W]	Colour temperature [K]	Luminous flux [lm]*	Diffuser type	Through wiring	Dimensions (H/W/T/S) [mm]	Energy efficiency class	Index
23	3000	3350	MAT		1230/45/50	C	>> 100796
23	4000	3600	MAT		1230/45/50	C	>> 100864
23	3000	3350	MAT	LS2	1230/45/50	C	>> 100819
23	4000	3600	MAT	LS2	1230/45/50	C	>> 100888

MIMO 2 LED 1510/45/50mm

Nominal power [W]	Colour temperature [K]	Luminous flux [lm]*	Diffuser type	Through wiring	Dimensions (H/W/T/S) [mm]	Energy efficiency class	Index
30	3000	4650	MAT		1510/45/50	C	>> 100802
30	4000	5000	MAT		1510/45/50	C	>> 100871
30	3000	4650	MAT	LS2	1510/45/50	C	>> 100826
30	4000	5000	MAT	LS2	1510/45/50	C	>> 100895

MIMO 2 LED 570/45/50mm

Nominal power [W]	Colour temperature [K]	Luminous flux [lm]*	Diffuser type	Through wiring	Dimensions (H/W/T/S) [mm]	Energy efficiency class	Index
13	3000	1900	MAT	LS2	570/45/50	D	>> 100758

MIMO 2 LED 670/45/50mm

Nominal power [W]	Colour temperature [K]	Luminous flux [lm]*	Diffuser type	Through wiring	Dimensions (H/W/T/S) [mm]	Energy efficiency class	Index
13	3000	1900	MAT		670/45/50	D	>> 100741
13	4000	2050	MAT		670/45/50	D	>> 100727
13	4000	2050	MAT	LS2	670/45/50	D	>> 100734

MIMO 2 LED

GENERAL CARD

ACCESSORIES AVAILABLE

index	Name
100673	MIMO 2 LED - double handle (set)
800ML208	IP68 High-bay PA 6.6 connector black DL06-3A-2Y



MIMO 2 LED - double handle (set) (100673)



IP68 High-bay PA 6.6 connector black DL06-3A-2Y (800ML208)

MIMO 2 LED BASIC

GENERAL CARD



TECHNICAL PARAMETERS

Ingress protection:	IP66
Impact resistance:	IK06
Nominal power [W]:	13.00; 27.00; 33.00
Luminous flux [lm]*:	1650; 3600; 4550
Colour temperature [K]:	4000
Colour rendering index:	>80
SDCM:	≤ 5
Energy efficiency class:	D; E
Material of the body:	PC
Diffuser material:	PC
Diffuser type:	MAT
Mounting version:	surface, suspended
Dimensions (H/W/T/S) [mm]:	1230/45/50; 1510/45/50; 670/45/50
Warranty [years]:	5

CHARACTERISTICS

MIMO 2 LED BASIC represents the new generation of hermetic LED luminaires with very high IP66 tightness. The luminaire uses modern concepts to improve light distribution and temperature balance. Its design involved both proven solutions that affect high efficiency and durability, as well as efficient LED modules offering the best lighting level required and energy savings. The multilayer shade has been made of UV-resistant polycarbonate.

APPLICATION

The multifunctional LED luminaire is designed for use in areas with increased dust and humidity. It is particularly suitable for industrial conditions, car parks (underground and multi-storey ones), sports stadiums, warehouses, transport terminals and underground passages. The luminaire is used both in new applications, as well as in replacing traditional fluorescent luminaires with energy-saving LED solutions. Its design is adapted for surface and suspended installation using standard equipment. The luminaire is intended for general areas inside buildings – store rooms and storage rack areas as well as cold stores included in tables 5.4 and 5.5 of the EN12464 standard; for indoor traffic zones included in table 5.1 of the EN12464 standard and for parking areas and as lighting of railway installations included in table 5.34 and 5.53 of the EN12464 standard, excluding ticket and luggage offices, counters, waiting rooms, entrance halls and lounges.

MIMO 2 LED BASIC

GENERAL CARD

AVAILABLE VERSIONS



Click index >>, to see details

MIMO 2 LED BASIC 1230/45/50mm

Nominal power [W]	Colour temperature [K]	Luminous flux [lm]*	Diffuser type	Dimensions (H/W/T/S) [mm]	Energy efficiency class	Index
27	4000	3600	MAT	1230/45/50	D	>> 100840

MIMO 2 LED BASIC 1510/45/50mm

Nominal power [W]	Colour temperature [K]	Luminous flux [lm]*	Diffuser type	Dimensions (H/W/T/S) [mm]	Energy efficiency class	Index
33	4000	4550	MAT	1510/45/50	D	>> 100857

MIMO 2 LED BASIC 670/45/50mm

Nominal power [W]	Colour temperature [K]	Luminous flux [lm]*	Diffuser type	Dimensions (H/W/T/S) [mm]	Energy efficiency class	Index
13	4000	1650	MAT	670/45/50	E	>> 100765

MIMO 2 LED BASIC

GENERAL CARD

ACCESSORIES AVAILABLE

index	Name
100673	MIMO 2 LED - double handle (set)
800ML208	IP68 High-bay PA 6.6 connector black DL06-3A-2Y



MIMO 2 LED - double handle (set) (100673)



IP68 High-bay PA 6.6 connector black DL06-3A-2Y (800ML208)

OCULUS LED

GENERAL CARD



TECHNICAL PARAMETERS

Ingress protection:	IP23; IP66
Impact resistance:	IK07; IK09
Nominal power [W]:	72.00 - 294.00
Luminous flux [lm]*:	12200 - 49200
Colour temperature [K]:	4000
Colour rendering index:	>70; >80
SDCM:	≤ 3; ≤ 5
Electrical protection class:	I
Energy efficiency class:	B; C
Material of the body:	powder coated aluminium
Diffuser material:	PC; tempered glass
Beam angle [°]:	55; 75; 105
Mounting version:	suspended from -20 to +60; from -25 to +35; from -25 to +45; from -25 to +60; from 0 to +25; od -30 do +60
Working temperature [°C]:	
Dimensions (H/W/T/S) [mm]:	106/371; 595/371
Warranty [years]:	5

CHARACTERISTICS

OCULUS LED is a HIGH-BAY luminaire from the NEXT GEN product line, constituting a new generation of luminaires dedicated to LED technology. The designed-from-scratch body – made of die-cast aluminium and powder coated – uses natural conduction and convection processes, which have a positive effect on luminaire's heat management. The shape of the body with an integrated, effective heat sink and high-quality materials ensure maximum heat dissipation from the LED module. The driver's external compartment, separated from the body, guarantees optimal thermal working conditions for the power supply system. This enables the luminaire to work in an ambient temperature of max 60°C. LEDs from a reputable manufacturer and new LED modules enable very high luminous efficiency: max 176 lm/W. This guarantees that the required lighting level and significant energy savings are achieved. The diffuser and optical system are composed of precise linear lenses made of polycarbonate (PC). There are 3 dedicated ranges of light distribution available: 55°, 75°, 105°. GLASS version with tempered glass (without lenses) and 105° distribution is also available.

Standard equipped with a 0.3 m long H07RN-F cable terminated with an additional male and female connector, which makes the assembly easier and more convenient.

Available version with radio motion sensor:

- allowing additional savings in electricity consumption
- convenient change of parameters by remote control (to be purchased separately).

Its design is adapted for suspended mounting and surface mounting (ceiling and wall) requiring the use of additional accessories.

APPLICATION

The luminaire is intended for suspended mounting (using chains, wires, etc.) both indoors and outdoors. It will prove perfect for manufacturing plants and halls as well as large-format warehouses and logistics centres.

OCULUS LED

GENERAL CARD

AVAILABLE VERSIONS



Click index >>, to see details

OCULUS LED 72W

Nominal power [W]	Colour temperature [K]	Luminous flux [lm]*	Diffuser material	Beam angle [°]	DIMM DALI	Emergency lighting [h]	Operating mode	Autotest	Working temperature [°C]	Dimensions (H/W/T/S) [mm]	Index
72	4000	13300	PC	105					from -20 to +60	106/371	>> 964145
72	4000	12500	tempered glass	105					from -25 to +60	106/371	>> 964916
72	4000	13300	PC	105		3	M	yes	from 0 to +25	595/371	>> 964374
72	4000	12850	PC	55					from -20 to +60	106/371	>> 964169
72	4000	12850	PC	55		3	M	yes	from 0 to +25	595/371	>> 963889
72	4000	12850	PC	75					from -20 to +60	106/371	>> 964152
72	4000	12850	PC	75		3	M	yes	from 0 to +25	595/371	>> 964381
72	4000	12500	tempered glass	105	yes				from -20 to +60	106/371	>> 964961
72	4000	13300	PC	105	yes				from -20 to +60	106/371	>> 964398
72	4000	12850	PC	55	yes				from -20 to +60	106/371	>> 963209
72	4000	12850	PC	75	yes				from -20 to +60	106/371	>> 963216

OCULUS LED 73W

Nominal power [W]	Colour temperature [K]	Luminous flux [lm]*	Diffuser material	Beam angle [°]	DIMM DALI	Emergency lighting [h]	Operating mode	Autotest	Working temperature [°C]	Dimensions (H/W/T/S) [mm]	Index
73	4000	12650	PC	105					from -25 to +60	106/371	>> 963957
73	4000	12250	PC	55					from -25 to +60	106/371	>> 963971
73	4000	12250	PC	75					from -25 to +60	106/371	>> 963964
73	4000	12650	PC	105	yes				from -20 to +60	106/371	>> 963292
73	4000	12200	PC	55	yes				from -20 to +60	106/371	>> 963278
73	4000	12200	PC	75	yes				from -20 to +60	106/371	>> 963285

OCULUS LED 101W

Nominal power [W]	Colour temperature [K]	Luminous flux [lm]*	Diffuser material	Beam angle [°]	DIMM DALI	Emergency lighting [h]	Operating mode	Autotest	Working temperature [°C]	Dimensions (H/W/T/S) [mm]	Index
101	4000	17000	PC	105					from -25 to +60	106/371	>> 963896
101	4000	16450	PC	55					from -25 to +60	106/371	>> 963919
101	4000	16450	PC	75					from -25 to +60	106/371	>> 963902
101	4000	17000	PC	105	yes				od -30 do +60	106/371	>> 963322
101	4000	16450	PC	55	yes				od -30 do +60	106/371	>> 963308
101	4000	16450	PC	75	yes				od -30 do +60	106/371	>> 963315

OCULUS LED

GENERAL CARD

OCULUS LED 104W

Nominal power [W]	Colour temperature [K]	Luminous flux [lm]*	Diffuser material	Beam angle [°]	DIMM DALI	Emergency lighting [h]	Operating mode	Autotest	Working temperature [°C]	Dimensions (H/W/T/S) [mm]	Index
104	4000	19000	PC	105					from -25 to +60	106/371	>> 964060
104	4000	17900	tempered glass	105					from -25 to +60	106/371	>> 964923
104	4000	19000	PC	105		3	M	yes	from 0 to +25	595/371	>> 964336
104	4000	18300	PC	55					from -25 to +60	106/371	>> 964084
104	4000	18300	PC	55		3	M	yes	from 0 to +25	595/371	>> 963865
104	4000	18300	PC	75					from -25 to +60	106/371	>> 964077
104	4000	18300	PC	75		3	M	yes	from 0 to +25	595/371	>> 964343
104	4000	19000	PC	105	yes				from -25 to +60	106/371	>> 964206
104	4000	17900	tempered glass	105	yes				from -25 to +60	106/371	>> 964978
104	4000	18300	PC	55	yes				from -25 to +60	106/371	>> 964220
104	4000	18300	PC	75	yes				from -25 to +60	106/371	>> 964213

OCULUS LED 126W

Nominal power [W]	Colour temperature [K]	Luminous flux [lm]*	Diffuser material	Beam angle [°]	DIMM DALI	Emergency lighting [h]	Operating mode	Autotest	Working temperature [°C]	Dimensions (H/W/T/S) [mm]	Index
126	4000	22700	PC	105					from -25 to +60	106/371	>> 964039
126	4000	21300	tempered glass	105					from -25 to +60	106/371	>> 964930
126	4000	22700	PC	105		3	M	yes	from 0 to +25	595/371	>> 964312
126	4000	21950	PC	55					from -25 to +60	106/371	>> 964053
126	4000	21950	PC	55		3	M	yes	from 0 to +25	595/371	>> 963858
126	4000	21950	PC	75					from -25 to +60	106/371	>> 964046
126	4000	21950	PC	75		3	M	yes	from 0 to +25	595/371	>> 964329
126	4000	21300	tempered glass	105	yes				from -20 to +60	106/371	>> 964985
126	4000	22700	PC	105	yes				from -25 to +60	106/371	>> 964404
126	4000	21950	PC	55	yes				from -25 to +60	106/371	>> 963223
126	4000	21950	PC	75	yes				from -25 to +60	106/371	>> 963230

OCULUS LED 141W

Nominal power [W]	Colour temperature [K]	Luminous flux [lm]*	Diffuser material	Beam angle [°]	DIMM DALI	Emergency lighting [h]	Operating mode	Autotest	Working temperature [°C]	Dimensions (H/W/T/S) [mm]	Index
141	4000	23000	PC	105					from -25 to +60	106/371	>> 963926
141	4000	22250	PC	55					from -25 to +60	106/371	>> 963940
141	4000	22250	PC	75					from -25 to +60	106/371	>> 963933
141	4000	23000	PC	105	yes				from -25 to +60	106/371	>> 963353

OCULUS LED

GENERAL CARD

Nominal power [W]	Colour temperature [K]	Luminous flux [lm]*	Diffuser material	Beam angle [°]	DIMM DALI	Emergency lighting [h]	Operating mode	Autotest	Working temperature [°C]	Dimensions (H/W/T/S) [mm]	Index
141	4000	22250	PC	55	yes				from -25 to +60	106/371	>> 963339
141	4000	22250	PC	75	yes				from -25 to +60	106/371	>> 963346

OCULUS LED 146W

Nominal power [W]	Colour temperature [K]	Luminous flux [lm]*	Diffuser material	Beam angle [°]	DIMM DALI	Emergency lighting [h]	Operating mode	Autotest	Working temperature [°C]	Dimensions (H/W/T/S) [mm]	Index
146	4000	26400	PC	105					from -25 to +60	106/371	>> 964022
146	4000	24800	tempered glass	105					from -25 to +60	106/371	>> 964947
146	4000	26400	PC	105		3	M	yes	from 0 to +25	595/371	>> 964305
146	4000	25500	PC	55					from -25 to +60	106/371	>> 964015
146	4000	25500	PC	55		3	M	yes	from 0 to +25	595/371	>> 963841
146	4000	25500	PC	75					from -25 to +60	106/371	>> 964008
146	4000	25500	PC	75		3	M	yes	from 0 to +25	595/371	>> 964299
146	4000	24800	tempered glass	105	yes				from -25 to +60	106/371	>> 964879
146	4000	26400	PC	105	yes				from -25 to +60	106/371	>> 963261
146	4000	25500	PC	55	yes				from -25 to +60	106/371	>> 963247
146	4000	25500	PC	75	yes				from -25 to +60	106/371	>> 963254

OCULUS LED 206W

Nominal power [W]	Colour temperature [K]	Luminous flux [lm]*	Diffuser material	Beam angle [°]	DIMM DALI	Emergency lighting [h]	Operating mode	Autotest	Working temperature [°C]	Dimensions (H/W/T/S) [mm]	Index
206	4000	35850	PC	105					from -25 to +45	106/371	>> 964114
206	4000	33600	tempered glass	105					from -25 to +45	106/371	>> 964954
206	4000	35850	PC	105		3	M	yes	from 0 to +25	595/371	>> 964367
206	4000	34650	PC	55					from -25 to +45	106/371	>> 964107
206	4000	34650	PC	55		3	M	yes	from 0 to +25	595/371	>> 963872
206	4000	34650	PC	75					from -25 to +45	106/371	>> 964091
206	4000	34650	PC	75		3	M	yes	from 0 to +25	595/371	>> 964350
206	4000	35850	PC	105	yes				from -25 to +45	106/371	>> 964190
206	4000	33600	tempered glass	105	yes				from -25 to +45	106/371	>> 964992
206	4000	34650	PC	55	yes				from -25 to +45	106/371	>> 964183
206	4000	34650	PC	75	yes				from -25 to +45	106/371	>> 964176

OCULUS LED

GENERAL CARD

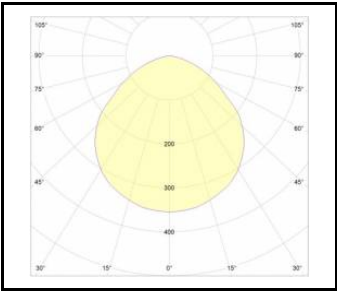
OCULUS LED 294W

Nominal power [W]	Colour temperature [K]	Luminous flux [lm]*	Diffuser material	Beam angle [°]	DIMM DALI	Emergency lighting [h]	Operating mode	Autotest	Working temperature [°C]	Dimensions (H/W/T/S) [mm]	Index
294	4000	49200	PC	105					from -25 to +35	106/371	>> 963780
294	4000	47550	PC	55					from -25 to +35	106/371	>> 963773
294	4000	47550	PC	75					from -25 to +35	106/371	>> 963766

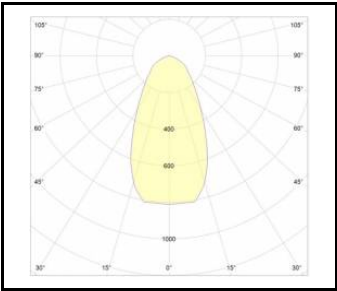
OCULUS LED

GENERAL CARD

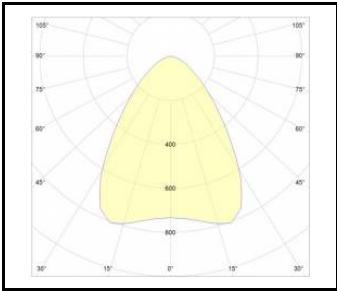
LUMINOUS INTENSITY DISTRIB. CURVE



OCULUS LED 105D



OCULUS LED 55D



OCULUS LED 75D

OCULUS LED

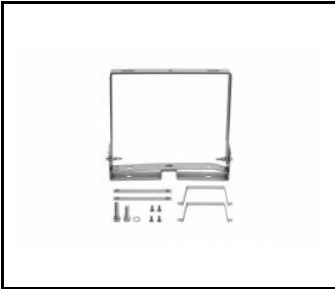
GENERAL CARD

ACCESSORIES AVAILABLE

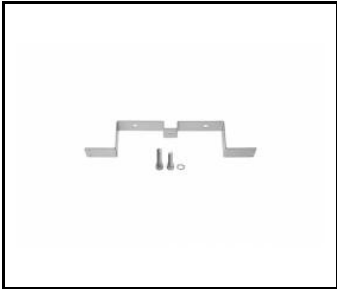
index	Name
964244	OCULUS LED - RCR motion sensor
964886	OCULUS LED - universal handle
964893	OCULUS LED - surface mounting handle
964862	OCULUS LED - protective grid
963674	OCULUS LED - RCR / PIR DALI motion sensor
WSEL438	WSEL438 HD01R Remote control for motion sensor
WSEL415	WSEL415 Remote control for - PIR sensor



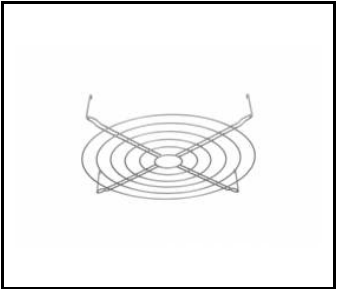
OCULUS LED - RCR motion sensor (964244)



OCULUS LED - universal handle (964886)



OCULUS LED - surface mounting handle (964893)



OCULUS LED - protective grid (964862)



OCULUS LED - RCR / PIR DALI motion sensor (963674)



WSEL438 HD01R Remote control for motion sensor (WSEL438)



WSEL415 Remote control for - PIR sensor (WSEL415)

OCULUS LED UGR

GENERAL CARD



TECHNICAL PARAMETERS

Ingress protection:	IP66
Impact resistance:	IK09
Rated power of the luminaire [W]*:	74.00 - 218.00
Luminous flux [lm]*:	11300 - 28800
Colour temperature [K]:	4000
Colour rendering index:	>80
SDCM:	≤ 3
Electrical protection class:	I
Material of the body:	powder coated aluminium
Colour of the body:	grey
Diffuser material:	PC
Diffuser type:	transparent
Mounting version:	surface, suspended
Working temperature [°C]:	from -20 to +60; from -25 to +45; from -25 to +60
Dimensions (H/W/T/S) [mm]:	106/371
Warranty [years]:	5

CHARACTERISTICS

A HIGH-BAY luminaire from the NEXT GEN product line, constituting a new generation of luminaires dedicated to LED technology. The designed-from-scratch body – made of die-cast aluminium and powder-coated – uses natural conduction and convection processes, which have a positive effect on the luminaire's heat management. The shape of the body with an integrated, effective heat sink and high-quality materials ensure maximum heat dissipation from the LED module. The driver's external compartment, separated from the body, guarantees optimal thermal working conditions for the power supply system. This enables the luminaire to work at an ambient temperature of max 60°C. LEDs from a reputable manufacturer and new LED modules enable very high luminous efficiency. This guarantees that the required lighting level and significant energy savings are achieved. The diffuser and optical system are composed of precise lenses made of polycarbonate (PC). Standard equipped with a 0.3 m long H07RN-F cable terminated with an additional male and female connector, which makes the assembly easier and more convenient. Its design is adapted for suspended mounting and surface mounting (ceiling and wall) requiring the use of additional accessories.

A UGR (Unified Glare Rating) of less than 19 minimizes the effect of glare affecting well-being, reducing fatigue and fewer mistakes.


APPLICATION

The luminaire is designed for suspended mounting using chains, ropes, etc. and with the use of additional accessories also surface-mounted (ceiling and wall) indoors. It works perfectly in factories and production halls as well as large-scale warehouses and logistics centers.

OCULUS LED UGR

GENERAL CARD

AVAILABLE VERSIONS

 Click index >>, to see details

Rated power of the luminaire [W]*	Colour temperature [K]	Luminous flux [lm]*	DIMM DALI	Working temperature [°C]	Dimensions (H/W/T/S) [mm]	Index
74	4000	11300		from -20 to +60	106/371	>> 561238
109	4000	15900		from -25 to +60	106/371	>> 561221
109	4000	15900	yes	from -25 to +60	106/371	>> 561252
129	4000	18700		from -25 to +60	106/371	>> 561214
151	4000	21500		from -25 to +60	106/371	>> 561108
218	4000	28800		from -25 to +45	106/371	>> 561139
218	4000	28800	yes	from -25 to +45	106/371	>> 561245

OCULUS LED UGR

GENERAL CARD

ACCESSORIES AVAILABLE

index	Name
964244	OCULUS LED - RCR motion sensor
963674	OCULUS LED - RCR / PIR DALI motion sensor



OCULUS LED - RCR motion sensor (964244)



OCULUS LED - RCR / PIR DALI motion sensor (963674)

OCULUS LED ENDURA

GENERAL CARD



TECHNICAL PARAMETERS

Ingress protection:	IP66
Impact resistance:	IK09
Nominal power [W]:	203.00
Luminous flux [lm]*:	26600 - 28300
Colour temperature [K]:	4000
Colour rendering index:	>80
SDCM:	≤ 3
Energy efficiency class:	C; D
Material of the body:	powder coated aluminium
Diffuser material:	PC; tempered glass
Beam angle [°]:	55; 75; 105
Mounting version:	suspended
Working temperature [°C]:	from -20 to +75 (luminaire) / from -20 to +45 (driver)
Dimensions (H/W/T/S) [mm]:	106/371
Warranty [years]:	5

CHARACTERISTICS

OCULUS LED is a HIGH-BAY luminaire from the NEXT GEN product line, constituting a new generation of luminaires dedicated to LED technology. The designed-from-scratch body – made of die-cast aluminium and powder coated – uses natural conduction and convection processes, which have a positive effect on luminaire's heat management. The shape of the body with an integrated, effective heat sink and high-quality materials ensure maximum heat dissipation from the LED module. The external driver compartment, separated from the body, connected to the lamp with a 10-meter cable guarantees optimal thermal conditions for the power supply system. This makes it possible to work the lamp at an ambient temperature of max + 75°C, and the driver + 45°C. LEDs from a reputable manufacturer and new LED modules enable high luminous efficiency: max 140 lm/W. This guarantees that the required lighting level and significant energy savings are achieved. The diffuser and optical system are composed of precise linear lenses made of polycarbonate (PC). There are 3 dedicated ranges of light distribution available: 55°, 75°, 105°. Version with tempered glass (without lenses) and 105° distribution is also available. Standard equipped with a H07RN-F cable terminated with an additional male and female connector, which makes the assembly easier and more convenient. Its design is adapted for suspended mounting.

APPLICATION

The luminaire is intended for suspended mounting (using chains, wires, etc.) both indoors and outdoors. It will prove perfect for manufacturing plants and halls as well as large-format warehouses and logistics centres.

OCULUS LED ENDURA

GENERAL CARD

AVAILABLE VERSIONS



Click index >>, to see details

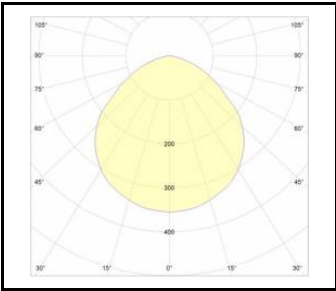
OCULUS LED ENDURA 203W

Nominal power [W]	Colour temperature [K]	Luminous flux [lm]*	Diffuser material	Beam angle [°]	Energy efficiency class	Index
203	4000	27000	PC	55	D	>> 964282
203	4000	27000	PC	75	D	>> 964275
203	4000	28300	PC	105	C	>> 964268
203	4000	26600	tempered glass	105	C	>> 963506

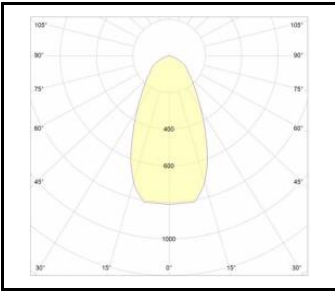
OCULUS LED ENDURA

GENERAL CARD

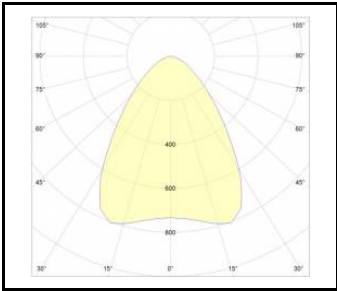
LUMINOUS INTENSITY DISTRIB. CURVE



OCULUS LED 105D



OCULUS LED 55D



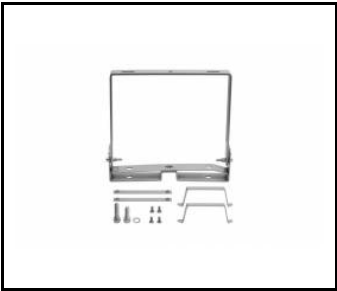
OCULUS LED 75D

OCULUS LED ENDURA

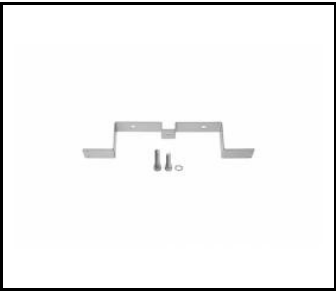
GENERAL CARD

ACCESSORIES AVAILABLE

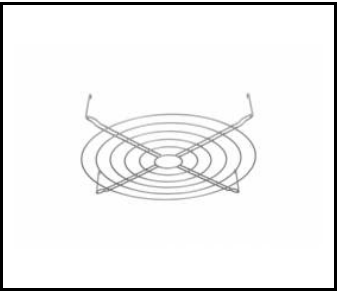
index	Name
964886	OCULUS LED - universal handle
964893	OCULUS LED - surface mounting handle
964862	OCULUS LED - protective grid



OCULUS LED - universal handle (964886)



OCULUS LED - surface mounting handle (964893)



OCULUS LED - protective grid (964862)

OCULUS LED POLE

GENERAL CARD



TECHNICAL PARAMETERS

Ingress protection:	IP66
Impact resistance:	IK09
Nominal power [W]:	206.00
Luminous flux [lm]*:	34650
Colour temperature [K]:	4000
Colour rendering index:	>80
SDCM:	≤ 3
Electrical protection class:	I
Energy efficiency class:	C
Material of the body:	powder coated aluminium
Colour of the body:	grey
Diffuser material:	PC
Diffuser type:	transparent
Beam angle [°]:	55
Mounting version:	on the pole; surface; to the crossbar
Working temperature [°C]:	from -25 to +45
Dimensions (H/W/T/S) [mm]:	106/371
Warranty [years]:	5
PZH certificate:	B-BK-60212-0481/21

CHARACTERISTICS

OCULUS LED is a HIGH-BAY luminaire from the NEXT GEN product line, which is a new generation of luminaires dedicated to LED technology. The body, designed from scratch, made of die-cast aluminum and powder coated, uses natural conduction and convection processes, which have a positive effect on the lamp's heat efficiency. The shape of the body with an integrated, effective heatsink and high-quality materials ensure maximum heat dissipation from the LED module. The driver's external compartment, separated from the body, guarantees optimal thermal working conditions for the power supply system. This enables the luminaire to work in an ambient temperature of max 60°C. LEDs from a reputable manufacturer and new LED modules enable very high luminous efficiency: max 160 lm/W. This guarantees that the required lighting level and significant energy savings are achieved. Standard luminaire is equipped with a 0.3 m long H07RN-F cable terminated with an additional male and female connector, which makes the assembly easier and more convenient.

Its construction is adapted for mounting:

- on the lighting pole, mast (P1 – Ø 60-120mm),
- on the lighting pole, mast - to the crossbar; surface (P2).

APPLICATION

The luminaire is designed to illuminate open spaces: parking lots, squares, sports facilities.

OCULUS LED POLE

GENERAL CARD

AVAILABLE VERSIONS



Click index >>, to see details

OCULUS LED POLE to the crossbar; surface

Nominal power [W]	Colour temperature [K]	Luminous flux [lm]*	Diffuser type	Energy efficiency class	Index
206	4000	34650	transparent	C	>> 963827

OCULUS LED POLE on the pole

Nominal power [W]	Colour temperature [K]	Luminous flux [lm]*	Diffuser type	Energy efficiency class	Index
206	4000	34650	transparent	C	>> 963834

OCULUS LED MINI

GENERAL CARD



TECHNICAL PARAMETERS

Ingress protection:	IP66
Impact resistance:	IK08
Rated power of the luminaire [W]*:	72.00 - 148.00
Luminous flux [lm]*:	11400 - 23800
Colour temperature [K]:	4000
Colour rendering index:	>80
SDCM:	≤ 3
Electrical protection class:	I
Energy efficiency class:	B; C
Material of the body:	powder coated aluminium
Colour of the body:	grey
Diffuser material:	PC; tempered glass
Diffuser type:	transparent
Beam angle [°]:	55; 75; 105
Mounting version:	surface, suspended
Dimensions (H/W/T/S) [mm]:	107/320
Warranty [years]:	5

CHARACTERISTICS

OCULUS LED MINI is a HIGH-BAY luminaire from the NEXT GEN product line, constituting a new generation of luminaires dedicated to LED technology. The designed-from-scratch body – made of die-cast aluminium and powder coated – uses natural conduction and convection processes, which have a positive effect on luminaire's heat management. The shape of the body with an integrated, effective heat sink and high-quality materials ensure maximum heat dissipation from the LED module. The driver's external compartment, separated from the body, guarantees optimal thermal working conditions for the power supply system. This enables the luminaire to work in an ambient temperature of max 55°C. LEDs from a reputable manufacturer and new LED modules enable very high luminous efficiency. This guarantees that the required lighting level and significant energy savings are achieved. The diffuser and optical system are composed of precise linear lenses made of polycarbonate (PC). There are 3 dedicated ranges of light distribution available: 55°, 75°, 105°. GLASS version with tempered glass (without lenses) and 105° distribution is also available. Standard equipped with a 0.3 m long H07RN-F cable terminated with an additional male and female connector, which makes the assembly easier and more convenient. Its design is adapted for suspended mounting and surface mounting (ceiling and wall) requiring the use of additional accessories.

APPLICATION

The luminaire is designed for suspended mounting using chains, ropes, etc. and with the use of additional accessories also surface-mounted (ceiling and wall) both indoors and outdoors. It works perfectly in factories and production halls as well as large-scale warehouses and logistics centers.

OCULUS LED MINI

GENERAL CARD

AVAILABLE VERSIONS



Click index >>, to see details

OCULUS LED MINI 72W

Rated power of the luminaire [W]*	Colour temperature [K]	Luminous flux [lm]*	Beam angle [°]	Diffuser material	DIMM DALI	Energy efficiency class	Index
72	4000	11400	105	tempered glass		B	>> 967757
72	4000	11400	105	tempered glass	yes	B	>> 967405
72	4000	11700	55	PC		B	>> 967726
72	4000	11700	55	PC	yes	B	>> 967375
72	4000	11700	75	PC		B	>> 967733
72	4000	11700	75	PC	yes	B	>> 967382
72	4000	12100	105	PC		B	>> 967740
72	4000	12100	105	PC	yes	B	>> 967399

OCULUS LED MINI 73W

Rated power of the luminaire [W]*	Colour temperature [K]	Luminous flux [lm]*	Beam angle [°]	Diffuser material	DIMM DALI	Energy efficiency class	Index
73	4000	11400	55	PC		C	>> 967634
73	4000	11400	55	PC	yes	C	>> 967481
73	4000	11400	75	PC		C	>> 967641
73	4000	11400	75	PC	yes	C	>> 967498
73	4000	11700	105	PC		B	>> 967658
73	4000	11700	105	PC	yes	B	>> 967504

OCULUS LED MINI 103W

Rated power of the luminaire [W]*	Colour temperature [K]	Luminous flux [lm]*	Beam angle [°]	Diffuser material	DIMM DALI	Energy efficiency class	Index
103	4000	15400	55	PC		C	>> 967665
103	4000	15400	55	PC	yes	C	>> 967511
103	4000	15400	75	PC		C	>> 967672
103	4000	15400	75	PC	yes	C	>> 967528
103	4000	15900	105	PC		C	>> 967689
103	4000	15900	105	PC	yes	C	>> 967535

OCULUS LED MINI 106W

Rated power of the luminaire [W]*	Colour temperature [K]	Luminous flux [lm]*	Beam angle [°]	Diffuser material	DIMM DALI	Energy efficiency class	Index
106	4000	16300	105	tempered glass		C	>> 967825
106	4000	16300	105	tempered glass	yes	C	>> 967603
106	4000	16600	55	PC		C	>> 967795
106	4000	16600	55	PC	yes	C	>> 967597
106	4000	16600	75	PC		C	>> 967801
106	4000	16600	75	PC	yes	C	>> 967580

OCULUS LED MINI

GENERAL CARD

Rated power of the luminaire [W]*	Colour temperature [K]	Luminous flux [lm]*	Beam angle [°]	Diffuser material	DIMM DALI	Energy efficiency class	Index
106	4000	17200	105	PC		B	>> 967818
106	4000	17200	105	PC	yes	B	>> 967573

OCULUS LED MINI 128W

Rated power of the luminaire [W]*	Colour temperature [K]	Luminous flux [lm]*	Beam angle [°]	Diffuser material	DIMM DALI	Energy efficiency class	Index
128	4000	19400	105	tempered glass		C	>> 967894
128	4000	19400	105	tempered glass	yes	C	>> 967443
128	4000	20700	55	PC		B	>> 967863
128	4000	20700	55	PC	yes	B	>> 967412
128	4000	20700	75	PC		B	>> 967870
128	4000	20700	75	PC	yes	B	>> 967429
128	4000	21400	105	PC		B	>> 967887
128	4000	21400	105	PC	yes	B	>> 967436

OCULUS LED MINI 143W

Rated power of the luminaire [W]*	Colour temperature [K]	Luminous flux [lm]*	Beam angle [°]	Diffuser material	DIMM DALI	Energy efficiency class	Index
143	4000	20500	55	PC		C	>> 967696
143	4000	20500	55	PC	yes	C	>> 967542
143	4000	20500	75	PC		C	>> 967702
143	4000	20500	75	PC	yes	C	>> 967559
143	4000	21200	105	PC		C	>> 967719
143	4000	21200	105	PC	yes	C	>> 967566

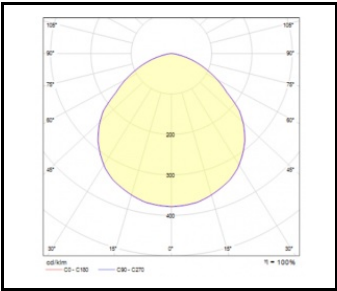
OCULUS LED MINI 148W

Rated power of the luminaire [W]*	Colour temperature [K]	Luminous flux [lm]*	Beam angle [°]	Diffuser material	DIMM DALI	Energy efficiency class	Index
148	4000	22600	105	tempered glass		C	>> 967962
148	4000	23000	55	PC		C	>> 967931
148	4000	23000	55	PC	yes	C	>> 967450
148	4000	23000	75	PC		C	>> 967948
148	4000	23000	75	PC	yes	C	>> 967467
148	4000	23800	105	PC		B	>> 967955
148	4000	23800	105	PC	yes	B	>> 967474

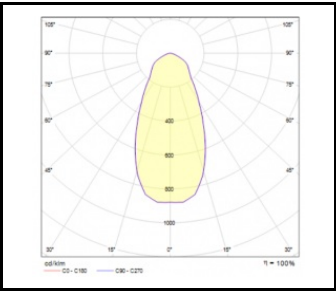
OCULUS LED MINI

GENERAL CARD

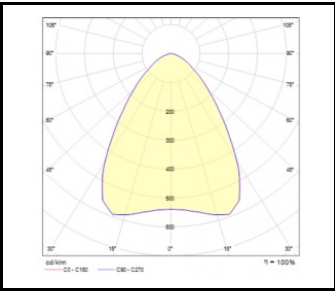
LUMINOUS INTENSITY DISTRIB. CURVE



105D



55D



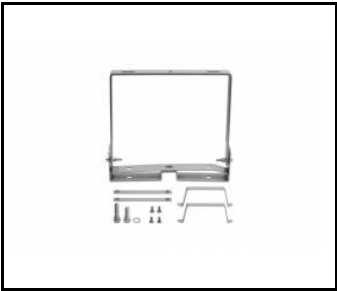
75D

OCULUS LED MINI

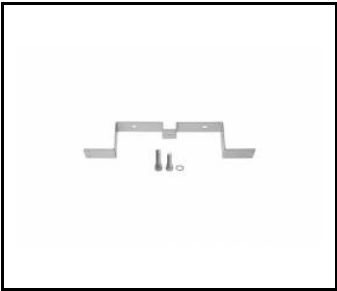
GENERAL CARD

ACCESSORIES AVAILABLE

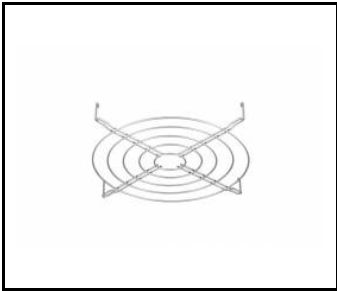
index	Name
964886	OCULUS LED - universal handle
964893	OCULUS LED - surface mounting handle
967030	OCULUS LED MINI - protective grid



OCULUS LED - universal handle (964886)



OCULUS LED - surface mounting handle (964893)



OCULUS LED MINI - protective grid (967030)

OCULUS LED MINI UGR

GENERAL CARD



TECHNICAL PARAMETERS

Ingress protection:	IP66
Impact resistance:	IK08
Rated power of the luminaire [W]*:	74.00 - 151.00
Luminous flux [lm]*:	11300 - 21500
Colour temperature [K]:	4000
Colour rendering index:	>80
SDCM:	≤ 3
Electrical protection class:	I
Material of the body:	powder coated aluminium
Diffuser material:	PC
Diffuser type:	transparent
Beam angle [°]:	55
Mounting version:	surface, suspended
Dimensions (H/W/T/S) [mm]:	107/320
Warranty [years]:	5

CHARACTERISTICS

A HIGH-BAY luminaire from the NEXT GEN product line, constituting a new generation of luminaires dedicated to LED technology. The designed-from-scratch body – made of die-cast aluminium and powder-coated – uses natural conduction and convection processes, which have a positive effect on the luminaire's heat management. The shape of the body with an integrated, effective heat sink and high-quality materials ensure maximum heat dissipation from the LED module. The driver's external compartment, separated from the body, guarantees optimal thermal working conditions for the power supply system. This enables the luminaire to work at an ambient temperature of max 55°C. LEDs from a reputable manufacturer and new LED modules enable very high luminous efficiency. This guarantees that the required lighting level and significant energy savings are achieved. The diffuser and optical system are composed of precise lenses made of polycarbonate (PC). Standard equipped with a 0.3 m long H07RN-F cable terminated with an additional male and female connector, which makes the assembly easier and more convenient. Its design is adapted for suspended mounting and surface mounting (ceiling and wall) requiring the use of additional accessories.

A UGR (Unified Glare Rating) of less than 19 minimizes the effect of glare affecting well-being, reducing fatigue and fewer mistakes.

APPLICATION

The luminaire is designed for suspended mounting using chains, ropes, etc. and with the use of additional accessories also surface-mounted (ceiling and wall) indoors. It works perfectly in factories and production halls as well as large-scale warehouses and logistics centers.

OCULUS LED MINI UGR

GENERAL CARD

AVAILABLE VERSIONS



Click index >>, to see details

Rated power of the luminaire [W]*	Colour temperature [K]	Luminous flux [lm]*	DIMM DALI	Working temperature [°C]	Dimensions (H/W/T/S) [mm]	Index
74	4000	11300		55	107/320	>> 561306
74	4000	11300	yes	55	107/320	>> 561344
109	4000	15900		55	107/320	>> 561313
109	4000	15900	yes	55	107/320	>> 561351
129	4000	18700		50	107/320	>> 561320
129	4000	18700	yes	50	107/320	>> 561368
151	4000	21500		50	107/320	>> 561337
151	4000	21500	yes	50	107/320	>> 561375

OCULUS LED MINI UGR

GENERAL CARD

ACCESSORIES AVAILABLE

index	Name
967054	OCULUS LED MINI- RCR sensor -complete
967047	OCULUS LED MINI- PIR / RCR DALI sensor complete



OCULUS LED MINI- RCR sensor - complete (967054)



OCULUS LED MINI- PIR / RCR DALI sensor complete (967047)

HULK 2 LED BASIC

GENERAL CARD



TECHNICAL PARAMETERS

Ingress protection:	IP66
Impact resistance:	IK09
Nominal power [W]:	119.00 - 162.00
Luminous flux [lm]*:	13700 - 19300
Colour temperature [K]:	4000
SDCM:	≤ 5
Electrical protection class:	I
Energy efficiency class:	E
Material of the body:	powder coated aluminium
Diffuser material:	PC
Beam angle [°]:	105
Mounting version:	surface, suspended
Dimensions (H/W/T/S) [mm]:	35/371
Warranty [years]:	5

CHARACTERISTICS

HULK 2 LED BASIC is a HIGH-BAY lamp from the NEXT GEN line, which is a new generation of lamps dedicated to LED technology. The body, designed from scratch, made of die-cast aluminum and powder coated, uses natural conduction and convection processes, which have a positive effect on the heat management of the lamp. The body shape with an integrated, effective heat sink and high-quality materials ensure maximum heat dissipation from the LED module. LEDs from a reputable manufacturer and new LED modules have an impact on high luminous efficacy: max 104 lm / W. This guarantees that the required lighting level is achieved and that significant energy savings are achieved. The DOB technology used ensures a very high Power Factor (0.99) and long life. The diffuser made of PC polycarbonate provides universal distribution of 105 degrees. Standard equipped with a 0.3 m long H07RN-F cable terminated with an additional male and female connector, facilitating and improving the assembly. Its design is adapted for suspended mounting, and with the use of additional accessories also surface-mounted (ceiling and wall).

APPLICATION

The luminaire is designed for suspended mounting using chains, ropes, etc. and with the use of additional accessories also surface-mounted (ceiling and wall) both indoors and outdoors. It works perfectly in factories and production halls as well as large-scale warehouses and logistics centers. The luminaire is intended for general areas inside buildings – store rooms and storage rack areas as well as cold stores included in tables 5.4 and 5.5 of the EN12464 standard; for indoor traffic zones included in table 5.1 of the EN12464 standard and for parking areas and as lighting of railway installations included in table 5.34 and 5.53 of the EN12464 standard, excluding ticket and luggage offices, counters, waiting rooms, entrance halls and lounges.

HULK 2 LED BASIC

GENERAL CARD

AVAILABLE VERSIONS



Click index >>, to see details

HULK 2 LED BASIC 119W

Nominal power [W]	Colour temperature [K]	Luminous flux [lm]*	Beam angle [°]	Energy efficiency class	Index
119	4000	13700	105	E	>> 963988

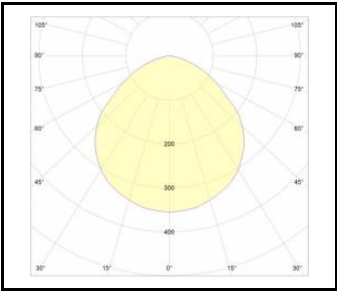
HULK 2 LED BASIC 162W

Nominal power [W]	Colour temperature [K]	Luminous flux [lm]*	Beam angle [°]	Energy efficiency class	Index
162	4000	19300	105	E	>> 963995

HULK 2 LED BASIC

GENERAL CARD

LUMINOUS INTENSITY DISTRIB. CURVE



HULK 2 LED BASIC 105D

HULK 2 LED BASIC

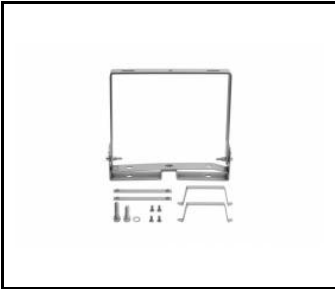
GENERAL CARD

ACCESSORIES AVAILABLE

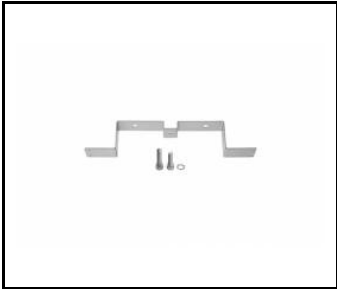
index	Name
964244	OCULUS LED - RCR motion sensor
964886	OCULUS LED - universal handle
964893	OCULUS LED - surface mounting handle
964862	OCULUS LED - protective grid



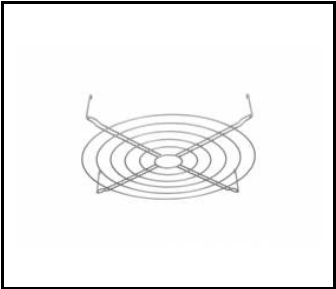
OCULUS LED - RCR motion sensor (964244)



OCULUS LED - universal handle (964886)



OCULUS LED - surface mounting handle (964893)



OCULUS LED - protective grid (964862)

HULK 2 LED MINI BASIC

GENERAL CARD



TECHNICAL PARAMETERS

Ingress protection:	IP66
Impact resistance:	IK09
Rated power of the luminaire [W]*:	137.00; 151.00
Luminous flux [lm]*:	13500; 16400
Colour temperature [K]:	4000
Colour rendering index:	>80
SDCM:	≤ 5
Electrical protection class:	I
Energy efficiency class:	E
Material of the body:	powder coated aluminium
Diffuser material:	PC
Diffuser type:	transparent
Beam angle [°]:	105
Mounting version:	surface, suspended
Dimensions (H/W/T/S) [mm]:	42/320
Warranty [years]:	5

CHARACTERISTICS

HULK 2 LED MINI BASIC is a HIGH-BAY lamp from the NEXT GEN line, which is a new generation of lamps dedicated to LED technology. The body, designed from scratch, made of die-cast aluminum and powder coated, uses natural conduction and convection processes, which have a positive effect on the heat management of the lamp. The body shape with an integrated, effective heat sink and high-quality materials ensure maximum heat dissipation from the LED module. LEDs from a reputable manufacturer and new LED modules have an impact on high luminous efficacy: up to 109 lm / W. This guarantees that the required lighting level is achieved and that significant energy savings are achieved. The DOB technology used ensures a very high Power Factor (0.99) and long life. The diffuser made of PC polycarbonate provides universal distribution of 105 degrees. Standard equipped with a 0.3 m long H07RN-F cable terminated with an additional male and female connector, facilitating and improving the assembly. Its design is adapted for suspended mounting, and with the use of additional accessories also surface-mounted (ceiling and wall). Additional accessories: protective net, holder for surface mounting, universal holder - adjustable.

APPLICATION

The luminaire is designed for suspended mounting using chains, ropes, etc. and with the use of additional accessories also surface-mounted (ceiling and wall) both indoors and outdoors. It works perfectly in factories and production halls as well as large-scale warehouses and logistics centers. The luminaire is intended for general areas inside buildings – store rooms and storage rack areas as well as cold stores included in tables 5.4 and 5.5 of the EN12464 standard; for indoor traffic zones included in table 5.1 of the EN12464 standard and for parking areas and as lighting of railway installations included in table 5.34 and 5.53 of the EN12464 standard, excluding ticket and luggage offices, counters, waiting rooms, entrance halls and lounges.

HULK 2 LED MINI BASIC

GENERAL CARD

AVAILABLE VERSIONS



Click index >>, to see details

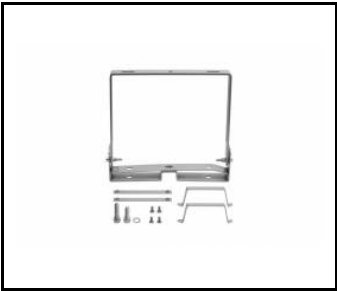
Rated power of the luminaire [W]*	Colour temperature [K]	Luminous flux [lm]*	Beam angle [°]	Diffuser material	Index
137	4000	13500	105	PC	>> 967610
151	4000	16400	105	PC	>> 967627

HULK 2 LED MINI BASIC

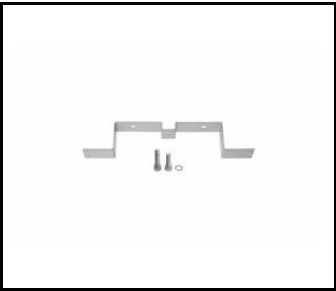
GENERAL CARD

ACCESSORIES AVAILABLE

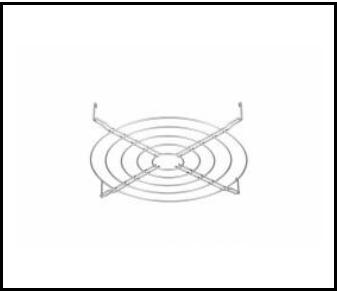
index	Name
964886	OCULUS LED - universal handle
964893	OCULUS LED - surface mounting handle
967030	OCULUS LED MINI - protective grid



OCULUS LED - universal handle (964886)



OCULUS LED - surface mounting handle (964893)



OCULUS LED MINI - protective grid (967030)

QUEST 2 LED HB

GENERAL CARD



TECHNICAL PARAMETERS

Ingress protection:	IP65; IP66
Impact resistance:	IK09
Rated power of the luminaire [W]*:	108.00 - 486.00
Luminous flux [lm]*:	14000 - 61800
Colour temperature [K]:	4000; 5700
Colour rendering index:	> 80; >70
SDCM:	≤ 3; ≤ 5
Electrical protection class:	I
Energy efficiency class:	C; D
Material of the body:	aluminium
Colour of the body:	RAL 7016; anthracite grey
Diffuser material:	glass
Diffuser type:	transparent
Beam angle [°]:	120; 125/30; 70
Mounting version:	surface; suspended
Working temperature [°C]:	from -20 to +35 321/424/37; 335/450/45; 335/510/85; 415/424/37; 430/450/45; 430/510/85; 671/424/37; 700/450/45; 700/510/85; 859/424/37; 870/450/45; 870/510/85
Dimensions (H/W/T/S) [mm]:	
Warranty [years]:	5

CHARACTERISTICS

High-quality highbay with inbuilt LED source. The body is made of die-cast aluminium, powder coated in anthracite grey (RAL 7016), and the mounting bracket is made of black-painted steel. The diffuser is made of 5 mm thick tempered glass.

Available version with radio motion sensor:

- allowing additional savings in electricity consumption
- convenient change of parameters by remote control (to be purchased separately).


APPLICATION

The luminaire is dedicated for surface or suspended installation (with chains) for both internal and external use. It is designed for industrial plants, production halls and large area warehouses.

QUEST 2 LED HB

GENERAL CARD

AVAILABLE VERSIONS

 Click index >>, to see details

QUEST 2 LED HB 108W

Rated power of the luminaire [W]*	Colour temperature [K]	Luminous flux [lm]*	Beam angle [°]	Motion sensor	DIMM DALI	Version	Mounting version	Dimensions (H/W/T/S) [mm]	Index
108	4000	14700	120			1xM	surface	321/424/37	>> 698361
108	4000	14000	125/30			1xM	surface	321/424/37	>> 698385
108	4000	14200	70			1xM	surface	321/424/37	>> 698408
108	4000	14700	120		yes	1xM	surface	321/424/37	>> 698484
108	4000	14000	125/30		yes	1xM	surface	321/424/37	>> 698507
108	4000	14200	70		yes	1xM	surface	321/424/37	>> 698521
108	4000	14700	120	yes		1xM	surface	321/424/37	>> 698606
108	4000	14000	125/30	yes		1xM	surface	321/424/37	>> 698620
108	4000	14200	70	yes		1xM	surface	321/424/37	>> 698644
108	4000	14700	120			1xM	suspended	321/424/37	>> 698002
108	4000	14000	125/30			1xM	suspended	321/424/37	>> 698026
108	4000	14200	70			1xM	suspended	321/424/37	>> 698040
108	4000	14700	120		yes	1xM	suspended	321/424/37	>> 698125
108	4000	14000	125/30		yes	1xM	suspended	321/424/37	>> 698149
108	4000	14200	70		yes	1xM	suspended	321/424/37	>> 698163
108	4000	14700	120	yes		1xM	suspended	321/424/37	>> 698248
108	4000	14000	125/30	yes		1xM	suspended	321/424/37	>> 698262
108	4000	14200	70	yes		1xM	suspended	321/424/37	>> 698286

QUEST 2 LED HB 145W

Rated power of the luminaire [W]*	Colour temperature [K]	Luminous flux [lm]*	Beam angle [°]	Motion sensor	DIMM DALI	Version	Mounting version	Dimensions (H/W/T/S) [mm]	Index
145	4000	20100	120			1xL	surface	415/424/37	>> 698422
145	4000	19200	125/30			1xL	surface	415/424/37	>> 698446
145	4000	19500	70			1xL	surface	415/424/37	>> 698460
145	4000	20100	120		yes	1xL	surface	415/424/37	>> 698545
145	4000	19200	125/30		yes	1xL	surface	415/424/37	>> 698569
145	4000	19500	70		yes	1xL	surface	415/424/37	>> 698583
145	4000	20100	120	yes		1xL	surface	415/424/37	>> 698668
145	4000	19200	125/30	yes		1xL	surface	415/424/37	>> 698682
145	4000	19500	70	yes		1xL	surface	415/424/37	>> 698705
145	4000	20100	120			1xL	suspended	415/424/37	>> 698064
145	4000	19200	125/30			1xL	suspended	415/424/37	>> 698088
145	4000	19500	70			1xL	suspended	415/424/37	>> 698101

QUEST 2 LED HB

GENERAL CARD

Rated power of the luminaire [W]*	Colour temperature [K]	Luminous flux [lm]*	Beam angle [°]	Motion sensor	DIMM DALI	Version	Mounting version	Dimensions (H/W/T/S) [mm]	Index
145	4000	20100	120		yes	1xL	suspended	415/424/37	>> 698187
145	4000	19200	125/30		yes	1xL	suspended	415/424/37	>> 698200
145	4000	19500	70		yes	1xL	suspended	415/424/37	>> 698224
145	4000	20100	120	yes		1xL	suspended	415/424/37	>> 698309
145	4000	19200	125/30	yes		1xL	suspended	415/424/37	>> 698323
145	4000	19500	70	yes		1xL	suspended	415/424/37	>> 698347

QUEST 2 LED HB 182W

Rated power of the luminaire [W]*	Colour temperature [K]	Luminous flux [lm]*	Beam angle [°]	Motion sensor	DIMM DALI	Version	Mounting version	Dimensions (H/W/T/S) [mm]	Index
182	5700	23300	125/30			1xL	surface	430/510/85	>> 741999
182	5700	23700	70			1xL	surface	430/510/85	>> 742002
182	5700	24400	120			1xL	surface	430/510/85	>> 742019
182	5700	23300	125/30			1xL	suspended	430/450/45	>> 741968
182	5700	23700	70			1xL	suspended	430/450/45	>> 741975
182	5700	24400	120			1xL	suspended	430/450/45	>> 741982

QUEST 2 LED HB 184W

Rated power of the luminaire [W]*	Colour temperature [K]	Luminous flux [lm]*	Beam angle [°]	Motion sensor	DIMM DALI	Version	Mounting version	Dimensions (H/W/T/S) [mm]	Index
184	5700	23150	120			1xM	surface	335/510/85	>> 741357
184	5700	23150	120			1xM	suspended	335/450/45	>> 741326

QUEST 2 LED HB 216W

Rated power of the luminaire [W]*	Colour temperature [K]	Luminous flux [lm]*	Beam angle [°]	Motion sensor	DIMM DALI	Version	Mounting version	Dimensions (H/W/T/S) [mm]	Index
216	4000	29400	120			2xM	surface	671/424/37	>> 698378
216	4000	28000	125/30			2xM	surface	671/424/37	>> 698392
216	4000	28400	70			2xM	surface	671/424/37	>> 698415
216	4000	29400	120		yes	2xM	surface	671/424/37	>> 698491
216	4000	28000	125/30		yes	2xM	surface	671/424/37	>> 698514
216	4000	28400	70		yes	2xM	surface	671/424/37	>> 698538
216	4000	29400	120	yes		2xM	surface	671/424/37	>> 698613
216	4000	28000	125/30	yes		2xM	surface	671/424/37	>> 698637
216	4000	28400	70	yes		2xM	surface	671/424/37	>> 698651
216	4000	29400	120			2xM	suspended	671/424/37	>> 698019
216	4000	28000	125/30			2xM	suspended	671/424/37	>> 698033
216	4000	28400	70			2xM	suspended	671/424/37	>> 698057
216	4000	29400	120		yes	2xM	suspended	671/424/37	>> 698132
216	4000	28000	125/30		yes	2xM	suspended	671/424/37	>> 698156
216	4000	28400	70		yes	2xM	suspended	671/424/37	>> 698170

QUEST 2 LED HB

GENERAL CARD

Rated power of the luminaire [W]*	Colour temperature [K]	Luminous flux [lm]*	Beam angle [°]	Motion sensor	DIMM DALI	Version	Mounting version	Dimensions (H/W/T/S) [mm]	Index
216	4000	29400	120	yes		2xM	suspended	671/424/37	>> 698255
216	4000	28000	125/30	yes		2xM	suspended	671/424/37	>> 698279
216	4000	28400	70	yes		2xM	suspended	671/424/37	>> 698293

QUEST 2 LED HB 243W

Rated power of the luminaire [W]*	Colour temperature [K]	Luminous flux [lm]*	Beam angle [°]	Motion sensor	DIMM DALI	Version	Mounting version	Dimensions (H/W/T/S) [mm]	Index
243	5700	30900	120			2xL	surface	430/510/85	>> 742149
243	5700	30900	120			2xL	suspended	430/450/45	>> 742170

QUEST 2 LED HB 290W

Rated power of the luminaire [W]*	Colour temperature [K]	Luminous flux [lm]*	Beam angle [°]	Motion sensor	DIMM DALI	Version	Mounting version	Dimensions (H/W/T/S) [mm]	Index
290	4000	40200	120			2xL	surface	859/424/37	>> 698439
290	4000	38400	125/30			2xL	surface	859/424/37	>> 698453
290	4000	39000	70			2xL	surface	859/424/37	>> 698477
290	4000	40200	120		yes	2xL	surface	859/424/37	>> 698552
290	4000	38400	125/30		yes	2xL	surface	859/424/37	>> 698576
290	4000	39000	70		yes	2xL	surface	859/424/37	>> 698590
290	4000	40200	120	yes		2xL	surface	859/424/37	>> 698675
290	4000	38400	125/30	yes		2xL	surface	859/424/37	>> 698699
290	4000	39000	70	yes		2xL	surface	859/424/37	>> 698712
290	4000	40200	120			2xL	suspended	859/424/37	>> 698071
290	4000	38400	125/30			2xL	suspended	859/424/37	>> 698095
290	4000	39000	70			2xL	suspended	859/424/37	>> 698118
290	4000	40200	120		yes	2xL	suspended	859/424/37	>> 698194
290	4000	38400	125/30		yes	2xL	suspended	859/424/37	>> 698217
290	4000	39000	70		yes	2xL	suspended	859/424/37	>> 698231
290	4000	40200	120	yes		2xL	suspended	859/424/37	>> 698316
290	4000	38400	125/30	yes		2xL	suspended	859/424/37	>> 698330
290	4000	39000	70	yes		2xL	suspended	859/424/37	>> 698354

QUEST 2 LED HB 364W

Rated power of the luminaire [W]*	Colour temperature [K]	Luminous flux [lm]*	Beam angle [°]	Motion sensor	DIMM DALI	Version	Mounting version	Dimensions (H/W/T/S) [mm]	Index
364	5700	46600	125/30			2xL	surface	870/510/85	>> 742057
364	5700	47400	70			2xL	surface	870/510/85	>> 742064
364	5700	48800	120			2xL	surface	870/510/85	>> 742071
364	5700	46600	125/30			2xL	suspended	870/450/45	>> 742026
364	5700	47400	70			2xL	suspended	870/450/45	>> 742033
364	5700	48800	120			2xL	suspended	870/450/45	>> 742040

QUEST 2 LED HB

GENERAL CARD

QUEST 2 LED HB 368W

Rated power of the luminaire [W]*	Colour temperature [K]	Luminous flux [lm]*	Beam angle [°]	Motion sensor	DIMM DALI	Version	Mounting version	Dimensions (H/W/T/S) [mm]	Index
368	5700	46300	120			2xM	surface	700/510/85	>> 741418
368	5700	46300	120			2xM	suspended	700/450/45	>> 741388

QUEST 2 LED HB 486W

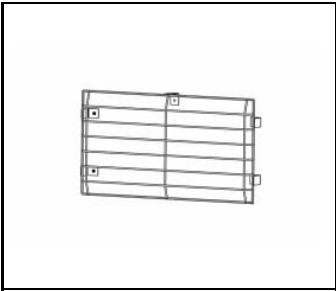
Rated power of the luminaire [W]*	Colour temperature [K]	Luminous flux [lm]*	Beam angle [°]	Motion sensor	DIMM DALI	Version	Mounting version	Dimensions (H/W/T/S) [mm]	Index
486	5700	61800	120			2xL	surface	870/510/85	>> 742132
486	5700	61800	120			2xL	suspended	870/450/45	>> 742101

QUEST 2 LED HB

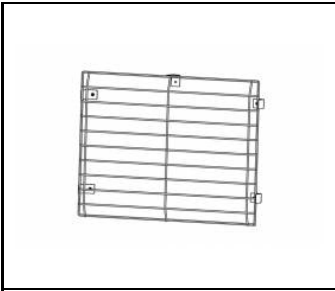
GENERAL CARD

ACCESSORIES AVAILABLE

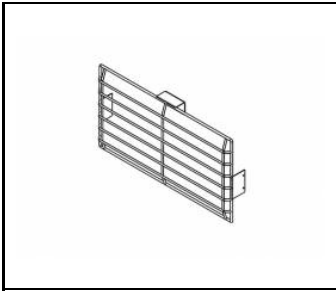
index	Name
559907	QUEST PLUS LED M protective grid RAL9006
559914	QUEST PLUS LED L protective grid RAL9006
559952	QUEST PLUS LED HB M protective grid RAL9006 single suspension
559945	QUEST PLUS LED HB L protective grid RAL9006 single suspension
WSEL438	WSEL438 HD01R Remote control for motion sensor



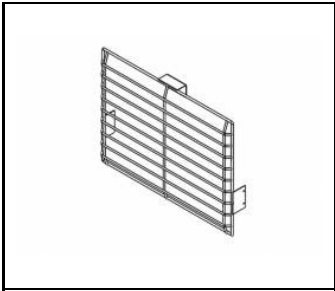
QUEST PLUS LED M protective grid RAL9006 (559907)



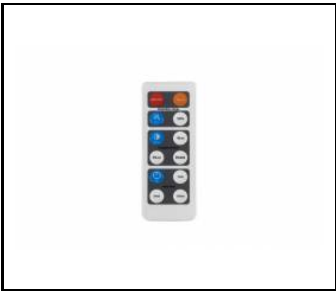
QUEST PLUS LED L protective grid RAL9006 (559914)



QUEST PLUS LED HB M protective grid RAL9006 single suspension (559952)



QUEST PLUS LED HB L protective grid RAL9006 single suspension (559945)



WSEL438 HD01R Remote control for motion sensor (WSEL438)

QUEST 2 LED ENDURA HB

GENERAL CARD



TECHNICAL PARAMETERS

Ingress protection:	IP66
Impact resistance:	IK09
Rated power of the luminaire [W]*:	108 - 290
Luminous flux [lm]*:	14700 - 40200
Colour temperature [K]:	4000
Colour rendering index:	> 80
SDCM:	≤ 3
Electrical protection class:	I
Energy efficiency class:	C
Material of the body:	aluminium
Diffuser material:	glass
Diffuser type:	transparent
Beam angle [°]:	120
Mounting version:	surface; suspended
Dimensions (H/W/T/S) [mm]:	321/424/37; 415/424/37; 671/424/37; 859/424/37
Warranty [years]:	5

CHARACTERISTICS

High-quality highbay with inbuilt LED source. The body is made of die-cast aluminium, powder coated in anthracite grey (RAL 7016), and the mounting bracket is made of black-painted steel. The diffuser is made of 5 mm thick tempered glass.


APPLICATION

QUEST 2 LED ENDURA is a fitting designed for lighting surfaces with the ambient temperature up to +60°C (eg. for industrial plants or bakeries). The unfavourable conditions of the environment do not have influence on the fitting's reliability and efficacy. In rooms such as cold stores, the requirements for lighting are far from standard. Only the fittings especially suited for working in such conditions can be used in rooms with cold temperatures. is a fitting designed for lighting surfaces with the temperature down to -35°C.

QUEST 2 LED ENDURA HB

GENERAL CARD

AVAILABLE VERSIONS

 Click index >>, to see details

QUEST 2 LED ENDURA HB surface

Rated power of the luminaire [W]*	Colour temperature [K]	Luminous flux [lm]*	Beam angle [°]	DIMM DALI	Version	Mounting version	Dimensions (H/W/T/S) [mm]	Index
108	4000	14700	120	yes	1xM	surface	321/424/37	>> 696527
108	4000	14700	120		1xM	surface	321/424/37	>> 698842
145	4000	20100	120	yes	1xL	surface	415/424/37	>> 696589
145	4000	20100	120		1xL	surface	415/424/37	>> 698903
216	4000	29400	120	yes	2xM	surface	671/424/37	>> 696534
216	4000	29400	120		2xM	surface	671/424/37	>> 698859
290	4000	40200	120	yes	2xL	surface	859/424/37	>> 696596
290	4000	40200	120		2xL	surface	859/424/37	>> 698910

QUEST 2 LED ENDURA HB suspended

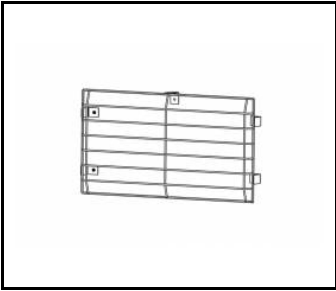
Rated power of the luminaire [W]*	Colour temperature [K]	Luminous flux [lm]*	Beam angle [°]	DIMM DALI	Version	Mounting version	Dimensions (H/W/T/S) [mm]	Index
108	4000	14700	120	yes	1xM	suspended	321/424/37	>> 696404
108	4000	14700	120		1xM	suspended	321/424/37	>> 698729
145	4000	20100	120	yes	1xL	suspended	415/424/37	>> 696466
145	4000	20100	120		1xL	suspended	415/424/37	>> 698781
216	4000	29400	120	yes	2xM	suspended	671/424/37	>> 696411
216	4000	29400	120		2xM	suspended	671/424/37	>> 698736
290	4000	40200	120	yes	2xL	suspended	859/424/37	>> 696473
290	4000	40200	120		2xL	suspended	859/424/37	>> 698798

QUEST 2 LED ENDURA HB

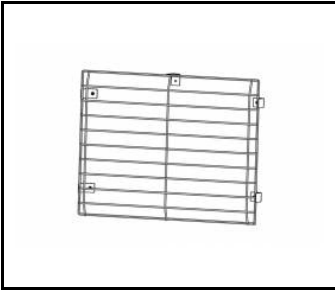
GENERAL CARD

ACCESSORIES AVAILABLE

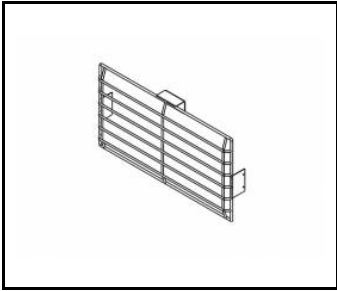
index	Name
559907	QUEST PLUS LED M protective grid RAL9006
559914	QUEST PLUS LED L protective grid RAL9006
559952	QUEST PLUS LED HB M protective grid RAL9006 single suspension
559945	QUEST PLUS LED HB L protective grid RAL9006 single suspension



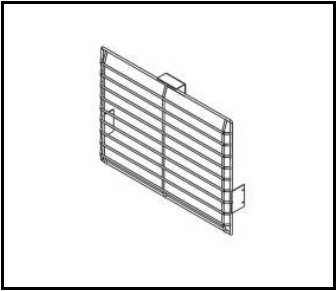
QUEST PLUS LED M protective grid RAL9006 (559907)



QUEST PLUS LED L protective grid RAL9006 (559914)



QUEST PLUS LED HB M protective grid RAL9006 single suspension (559952)



QUEST PLUS LED HB L protective grid RAL9006 single suspension (559945)

INDUSTRY 2 LED

GENERAL CARD



TECHNICAL PARAMETERS

Ingress protection:	IP23
Impact resistance:	IK07
Rated power of the luminaire [W]*:	45.00 - 147.00
Luminous flux [lm]*:	6800 - 23600
Colour temperature [K]:	4000
Colour rendering index:	>80
SDCM:	≤ 3
Electrical protection class:	I
Energy efficiency class:	B; C
Material of the body:	galvanized steel sheet
Optics material:	PMMA
Optics:	lens
Mounting version:	surface, suspended
Dimensions (H/W/T/S) [mm]:	1210/137/70; 1490/137/70; 1490/190/70
Warranty [years]:	5

CHARACTERISTICS

Galvanized steel sheet Industrial luminaire with IP23, with in-built energy-saving LED modules. Thanks to line lenses, following light distribution angles are available: 90°, 60°, 45°.

APPLICATION

Luminaire intended for warehouses, large stores, production halls and sports facilities. Meant for new installations and replacement of traditional T8 & T5 luminaires with energy saving LED sources.

INDUSTRY 2 LED

GENERAL CARD

AVAILABLE VERSIONS



Click index >>, to see details

INDUSTRY 2 LED 45W

Rated power of the luminaire [W]*	Colour temperature [K]	Luminous flux [lm]*	Beam angle [°]	DIMM DALI	Through wiring	Dimensions (H/W/T/S) [mm]	Index
45	4000	6800	45	yes	LS1	1210/137/70	>> 672224
45	4000	6800	45	yes	LS2	1210/137/70	>> 672231
45	4000	6800	45		LS1	1210/137/70	>> 672200
45	4000	6800	45		LS2	1210/137/70	>> 672217
45	4000	6950	60	yes	LS1	1210/137/70	>> 672422
45	4000	6950	60	yes	LS2	1210/137/70	>> 672439
45	4000	6950	60		LS1	1210/137/70	>> 672408
45	4000	6950	60		LS2	1210/137/70	>> 672415
45	4000	7000	90	yes	LS1	1210/137/70	>> 672026
45	4000	7000	90	yes	LS2	1210/137/70	>> 672033
45	4000	7000	90		LS1	1210/137/70	>> 672002
45	4000	7000	90		LS2	1210/137/70	>> 672019

INDUSTRY 2 LED 61W

Rated power of the luminaire [W]*	Colour temperature [K]	Luminous flux [lm]*	Beam angle [°]	DIMM DALI	Through wiring	Dimensions (H/W/T/S) [mm]	Index
61	4000	8600	45	yes	LS1	1210/137/70	>> 973437
61	4000	8600	45	yes	LS2	1210/137/70	>> 973376
61	4000	8600	45		LS1	1210/137/70	>> 973420
61	4000	8600	45		LS2	1210/137/70	>> 973369
61	4000	8800	60	yes	LS1	1210/137/70	>> 973413
61	4000	8800	60	yes	LS2	1210/137/70	>> 973352
61	4000	8800	60		LS1	1210/137/70	>> 973406
61	4000	8800	60		LS2	1210/137/70	>> 973345
61	4000	8850	90	yes	LS1	1210/137/70	>> 973390
61	4000	8850	90	yes	LS2	1210/137/70	>> 973338
61	4000	8850	90		LS1	1210/137/70	>> 973383
61	4000	8850	90		LS2	1210/137/70	>> 973321

INDUSTRY 2 LED 66W

Rated power of the luminaire [W]*	Colour temperature [K]	Luminous flux [lm]*	Beam angle [°]	DIMM DALI	Through wiring	Dimensions (H/W/T/S) [mm]	Index
66	4000	9750	45	yes	LS1	1490/137/70	>> 672262
66	4000	9750	45	yes	LS2	1490/137/70	>> 672279
66	4000	9750	45		LS1	1490/137/70	>> 672248
66	4000	9750	45		LS2	1490/137/70	>> 672255
66	4000	9900	60	yes	LS1	1490/137/70	>> 672460

INDUSTRY 2 LED

GENERAL CARD

Rated power of the luminaire [W]*	Colour temperature [K]	Luminous flux [lm]*	Beam angle [°]	DIMM DALI	Through wiring	Dimensions (H/W/T/S) [mm]	Index
66	4000	9900	60	yes	LS2	1490/137/70	>> 672477
66	4000	9900	60		LS1	1490/137/70	>> 672446
66	4000	9900	60		LS2	1490/137/70	>> 672453
66	4000	10000	90	yes	LS1	1490/137/70	>> 672064
66	4000	10000	90	yes	LS2	1490/137/70	>> 672071
66	4000	10000	90		LS1	1490/137/70	>> 672040
66	4000	10000	90		LS2	1490/137/70	>> 672057

INDUSTRY 2 LED 76W

Rated power of the luminaire [W]*	Colour temperature [K]	Luminous flux [lm]*	Beam angle [°]	DIMM DALI	Through wiring	Dimensions (H/W/T/S) [mm]	Index
76	4000	10700	45	yes	LS1	1490/137/70	>> 973550
76	4000	10700	45	yes	LS2	1490/137/70	>> 973499
76	4000	10700	45		LS1	1490/137/70	>> 973543
76	4000	10700	45		LS2	1490/137/70	>> 973482
76	4000	10950	60	yes	LS1	1490/137/70	>> 973536
76	4000	10950	60	yes	LS2	1490/137/70	>> 973475
76	4000	10950	60		LS1	1490/137/70	>> 973529
76	4000	10950	60		LS2	1490/137/70	>> 973468
76	4000	11000	90	yes	LS1	1490/137/70	>> 973512
76	4000	11000	90	yes	LS2	1490/137/70	>> 973451
76	4000	11000	90		LS1	1490/137/70	>> 973505
76	4000	11000	90		LS2	1490/137/70	>> 973444

INDUSTRY 2 LED 91W

Rated power of the luminaire [W]*	Colour temperature [K]	Luminous flux [lm]*	Beam angle [°]	DIMM DALI	Through wiring	Dimensions (H/W/T/S) [mm]	Index
91	4000	13350	45	yes	LS1	1490/137/70	>> 672309
91	4000	13350	45	yes	LS2	1490/137/70	>> 672316
91	4000	13350	45		LS1	1490/137/70	>> 672286
91	4000	13350	45		LS2	1490/137/70	>> 672293
91	4000	13550	60	yes	LS1	1490/137/70	>> 672507
91	4000	13550	60	yes	LS2	1490/137/70	>> 672514
91	4000	13550	60		LS1	1490/137/70	>> 672484
91	4000	13550	60		LS2	1490/137/70	>> 672491
91	4000	13700	90	yes	LS1	1490/137/70	>> 672101
91	4000	13700	90	yes	LS2	1490/137/70	>> 672118
91	4000	13700	90		LS1	1490/137/70	>> 672088
91	4000	13700	90		LS2	1490/137/70	>> 672095

INDUSTRY 2 LED

GENERAL CARD

INDUSTRY 2 LED 106W

Rated power of the luminaire [W]*	Colour temperature [K]	Luminous flux [lm]*	Beam angle [°]	DIMM DALI	Through wiring	Dimensions (H/W/T/S) [mm]	Index
106	4000	15300	45	yes	LS1	1490/137/70	>> 672347
106	4000	15300	45	yes	LS2	1490/137/70	>> 672354
106	4000	15300	45		LS1	1490/137/70	>> 672323
106	4000	15300	45		LS2	1490/137/70	>> 672330
106	4000	15550	60	yes	LS1	1490/137/70	>> 672545
106	4000	15550	60	yes	LS2	1490/137/70	>> 672552
106	4000	15550	60		LS1	1490/137/70	>> 672521
106	4000	15550	60		LS2	1490/137/70	>> 672538
106	4000	15700	90	yes	LS1	1490/137/70	>> 672149
106	4000	15700	90	yes	LS2	1490/137/70	>> 672156
106	4000	15700	90		LS1	1490/137/70	>> 672125
106	4000	15700	90		LS2	1490/137/70	>> 672132

INDUSTRY 2 LED 134W

Rated power of the luminaire [W]*	Colour temperature [K]	Luminous flux [lm]*	Beam angle [°]	DIMM DALI	Through wiring	Dimensions (H/W/T/S) [mm]	Index
134	4000	19650	45	yes	LS1	1490/190/70	>> 672385
134	4000	19650	45	yes	LS2	1490/190/70	>> 672392
134	4000	19650	45		LS1	1490/190/70	>> 672361
134	4000	19650	45		LS2	1490/190/70	>> 672378
134	4000	20000	60	yes	LS1	1490/190/70	>> 672583
134	4000	20000	60	yes	LS2	1490/190/70	>> 672590
134	4000	20000	60		LS1	1490/190/70	>> 672569
134	4000	20000	60		LS2	1490/190/70	>> 672576
134	4000	20200	90	yes	LS1	1490/190/70	>> 672187
134	4000	20200	90	yes	LS2	1490/190/70	>> 672194
134	4000	20200	90		LS1	1490/190/70	>> 672163
134	4000	20200	90		LS2	1490/190/70	>> 672170

INDUSTRY 2 LED 147W

Rated power of the luminaire [W]*	Colour temperature [K]	Luminous flux [lm]*	Beam angle [°]	DIMM DALI	Through wiring	Dimensions (H/W/T/S) [mm]	Index
147	4000	22900	45	yes	LS1	1490/190/70	>> 973314
147	4000	22900	45	yes	LS2	1490/190/70	>> 973253
147	4000	22900	45		LS1	1490/190/70	>> 973307
147	4000	22900	45		LS2	1490/190/70	>> 973246
147	4000	23350	60	yes	LS1	1490/190/70	>> 973291
147	4000	23350	60	yes	LS2	1490/190/70	>> 973239
147	4000	23350	60		LS1	1490/190/70	>> 973284
147	4000	23350	60		LS2	1490/190/70	>> 973222

INDUSTRY 2 LED

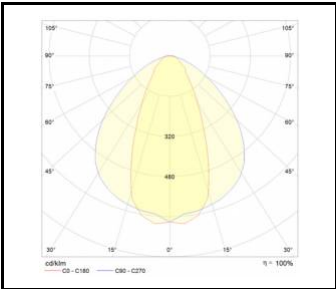
GENERAL CARD

Rated power of the luminaire [W]*	Colour temperature [K]	Luminous flux [lm]*	Beam angle [°]	DIMM DALI	Through wiring	Dimensions (H/W/T/S) [mm]	Index
147	4000	23600	90	yes	LS1	1490/190/70	>> 973277
147	4000	23600	90	yes	LS2	1490/190/70	>> 973215
147	4000	23600	90		LS1	1490/190/70	>> 973260
147	4000	23600	90		LS2	1490/190/70	>> 973208

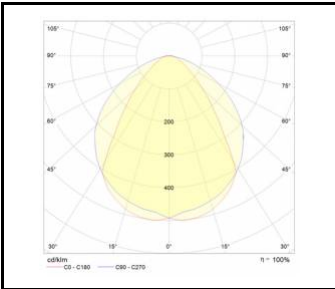
INDUSTRY 2 LED

GENERAL CARD

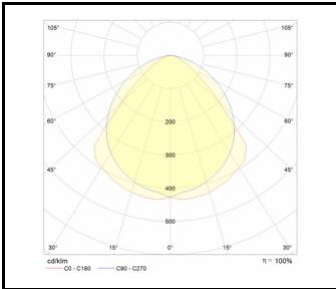
LUMINOUS INTENSITY DISTRIB. CURVE



INDUSTRY 2 LED 45°



INDUSTRY 2 LED 60°



INDUSTRY 2 LED 90°

INDUSTRY 2 LED

GENERAL CARD

ACCESSORIES AVAILABLE

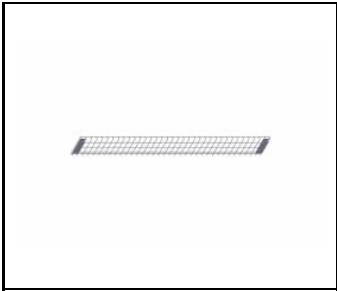
index	Name
541247	INDUSTRY LED suspension cord for chain (pack of 2)
543944	INDUSTRY LED pendant hook on wire (pack of 2)
541254	INDUSTRY LED protective grid 1490mm (60/72/90/102W)
908200	TYTAN LED, ATLAS LED, INDUSTRY LED - adjustable handle (set of 2)
540011	INDUSTRY LED raster 1210mm
540004	INDUSTRY LED raster 1490mm (60/72/90/102W)
541599	INDUSTRY LED protective grid 1210mm
539992	INDUSTRY LED protective grid 1490mm x3 (for 153W version)



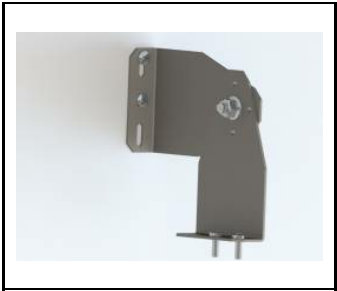
INDUSTRY LED suspension cord for chain (pack of 2) (541247)



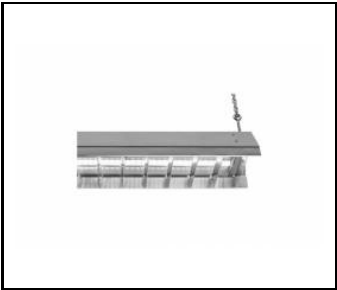
INDUSTRY LED pendant hook on wire (pack of 2) (543944)



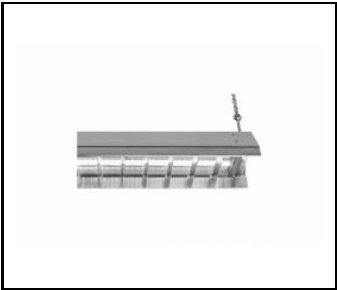
INDUSTRY LED protective grid 1490mm (60/72/90/102W) (541254)



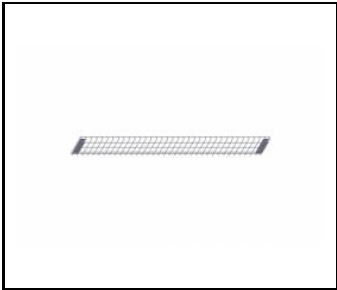
TYTAN LED, ATLAS LED, INDUSTRY LED - adjustable handle (set of 2) (908200)



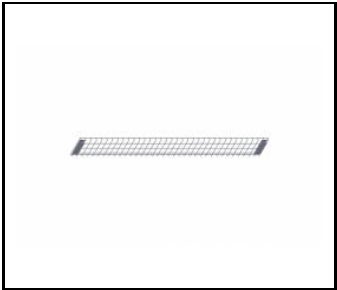
INDUSTRY LED raster 1210mm (540011)



INDUSTRY LED raster 1490mm (60/72/90/102W) (540004)



INDUSTRY LED protective grid 1210mm (541599)



INDUSTRY LED protective grid 1490mm x3 (for 153W version) (539992)

INDUSTRY IP40 LED

GENERAL CARD



TECHNICAL PARAMETERS

Ingress protection:	IP40
Impact resistance:	IK06
Rated power of the luminaire [W]*:	52.00; 73.00; 118.00
Luminous flux [lm]*:	7600; 10530; 17450
Colour temperature [K]:	4000
Colour rendering index:	>80
SDCM:	≤ 3
Electrical protection class:	I
Energy efficiency class:	C
Material of the body:	aluminium
Colour of the body:	grey
Optics material:	PMMA
Beam angle [°]:	45; 60; 90
Mounting version:	surface, suspended
Dimensions (H/W/T/S) [mm]:	47/52/1680
Warranty [years]:	5

CHARACTERISTICS

INDUSTRY IP40 LED is an industrial luminaire from the NEXT GEN line, constituting a new generation of lamps dedicated to LED technology. The applied construction allows for easy assembly and power supply connection. Luminaire body made of aluminium profile. Surface subjected to anodizing process to increase surface hardness and resistance to corrosion. Diodes from reputable manufacturer and new LED modules have an impact on the very high luminous efficiency: up to 148 lm/W. This guarantees reaching the required illumination level and significant energy saving. The optical system is made of UV-resistant PMMA. It can be adapted to different lighting requirements - 3 distribution angles: 90°, 60°, 45°.

APPLICATION

Particularly well suited for indoor use. Dedicated as the primary light source for commercial facilities, manufacturing plants and warehouses. It is appropriate for new applications as well as replacing conventional T8 & T5 fittings on energy-saving LED solutions.

INDUSTRY IP40 LED

GENERAL CARD

AVAILABLE VERSIONS



Click index >>, to see details

INDUSTRY IP40 LED 52W

Rated power of the luminaire [W]*	Colour temperature [K]	Luminous flux [lm]*	Beam angle [°]	Energy efficiency class	Index
52	4000	7600	45	C	>> 458507
52	4000	7600	60	C	>> 458552
52	4000	7600	90	C	>> 458569

INDUSTRY IP40 LED 73W

Rated power of the luminaire [W]*	Colour temperature [K]	Luminous flux [lm]*	Beam angle [°]	Energy efficiency class	Index
73	4000	10530	45	C	>> 458514
73	4000	10530	60	C	>> 458538
73	4000	10530	90	C	>> 458545

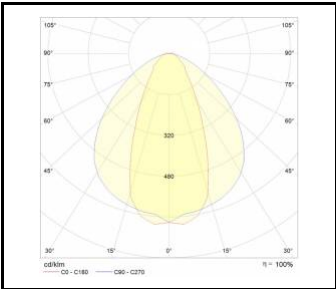
INDUSTRY IP40 LED 118W

Rated power of the luminaire [W]*	Colour temperature [K]	Luminous flux [lm]*	Beam angle [°]	Energy efficiency class	Index
118	4000	17450	45	C	>> 458521
118	4000	17450	60	C	>> 458576
118	4000	17450	90	C	>> 458583

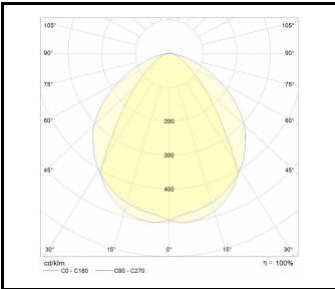
INDUSTRY IP40 LED

GENERAL CARD

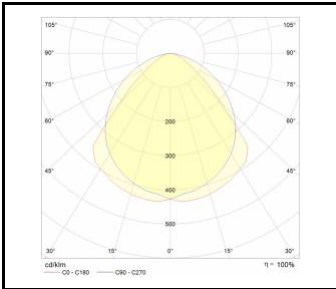
LUMINOUS INTENSITY DISTRIB. CURVE



INDUSTRY IP40 LED 45°



INDUSTRY IP40 LED 60°



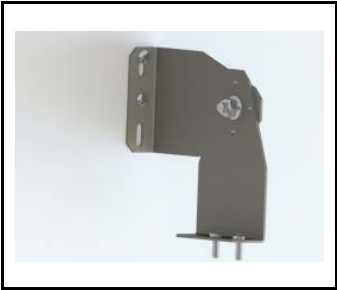
INDUSTRY IP40 LED 90°

INDUSTRY IP40 LED

GENERAL CARD

ACCESSORIES AVAILABLE

index	Name
908200	TYTAN LED, ATLAS LED, INDUSTRY LED - adjustable handle (set of 2)



TYTAN LED, ATLAS LED, INDUSTRY LED - adjustable handle (set of 2) (908200)

LINEA 3 LED

GENERAL CARD



TECHNICAL PARAMETERS

Ingress protection:	IP40
Impact resistance:	IK06
Rated power of the luminaire [W]*:	15.00 - 155.00
Luminous flux [lm]*:	2150 - 21000
Colour temperature [K]:	4000
SDCM:	≤ 3
Energy efficiency class:	C; D
Material of the body:	aluminium
Colour of the body:	grey
Optics material:	PMMA
Optics:	45; 60; 90
Mounting version:	surface, suspended
Dimensions (H/W/T/S) [mm]:	1680/47/52; 3360/47/52

CHARACTERISTICS

LINEA 3 LED is a system of suspended and surface-mounted NEXT-GEN lighting lines, which is a new generation of lamps dedicated to LED technology. An innovative connection system and through wiring allow quick connection of luminaires into a lighting line. The construction used allows for easy installation and connection of the power supply. The body, made from scratch, made of aluminum profile, and subjected to anodization process, provides the luminaire with strength and solidity, and the narrow side profile allows installation in hard-to-reach places. LEDs from reputable manufacturers integrated with redesigned brand new LED modules have an impact on very high luminous efficacy. This guarantees that the required lighting level is achieved and that significant energy savings are achieved. The optical system is made of UV-resistant PMMA. Thanks to the use of linear lenses it is possible to adapt to different lighting requirements - 3 distribution angles: 90, 60, 45.

APPLICATION

Particularly well suited for indoor use. Dedicated as the primary light source for commercial facilities, manufacturing plants, and warehouses. It is appropriate for new applications as well as replacing conventional T8 & T5 fittings on energy-saving LED solutions.

LINEA 3 LED

GENERAL CARD

AVAILABLE VERSIONS



Click index >>, to see details

LINEA 3 LED 1680/47/52mm

Rated power of the luminaire [W]*	Colour temperature [K]	Luminous flux [lm]*	Optics	DIMM DALI	Through wiring	Dimensions (H/W/T/S) [mm]	Index
15	4000	2150	45	yes	7x2,5	1680/47/52	>> 974014
15	4000	2150	60	yes	7x2,5	1680/47/52	>> 974038
15	4000	2150	90	yes	7x2,5	1680/47/52	>> 974052
15	4000	2150	45		5x2,5	1680/47/52	>> 974007
15	4000	2150	60		5x2,5	1680/47/52	>> 974021
15	4000	2150	90		5x2,5	1680/47/52	>> 974045
25	4000	3600	45	yes	7x2,5	1680/47/52	>> 974076
25	4000	3600	60	yes	7x2,5	1680/47/52	>> 974090
25	4000	3600	90	yes	7x2,5	1680/47/52	>> 974113
25	4000	3600	45		5x2,5	1680/47/52	>> 974069
25	4000	3600	60		5x2,5	1680/47/52	>> 974083
25	4000	3600	90		5x2,5	1680/47/52	>> 974106
38	4000	5300	45	yes	7x2,5	1680/47/52	>> 974137
38	4000	5300	60	yes	7x2,5	1680/47/52	>> 974151
38	4000	5300	90	yes	7x2,5	1680/47/52	>> 974175
38	4000	5300	45		5x2,5	1680/47/52	>> 974120
38	4000	5300	60		5x2,5	1680/47/52	>> 974144
38	4000	5300	90		5x2,5	1680/47/52	>> 974168
54	4000	7600	45	yes	7x2,5	1680/47/52	>> 974199
54	4000	7600	60	yes	7x2,5	1680/47/52	>> 974212
54	4000	7600	90	yes	7x2,5	1680/47/52	>> 974236
54	4000	7600	45		5x2,5	1680/47/52	>> 974182
54	4000	7600	60		5x2,5	1680/47/52	>> 974205
54	4000	7600	90		5x2,5	1680/47/52	>> 974229
77	4000	10500	45	yes	7x2,5	1680/47/52	>> 974250
77	4000	10500	60	yes	7x2,5	1680/47/52	>> 974274
77	4000	10500	90	yes	7x2,5	1680/47/52	>> 974298
77	4000	10500	45		5x2,5	1680/47/52	>> 974243
77	4000	10500	60		5x2,5	1680/47/52	>> 974267
77	4000	10500	90		5x2,5	1680/47/52	>> 974281

LINEA 3 LED 3360/47/52mm

Rated power of the luminaire [W]*	Colour temperature [K]	Luminous flux [lm]*	Optics	DIMM DALI	Through wiring	Dimensions (H/W/T/S) [mm]	Index
30	4000	4300	45	yes	7x2,5	3360/47/52	>> 974311

LINEA 3 LED

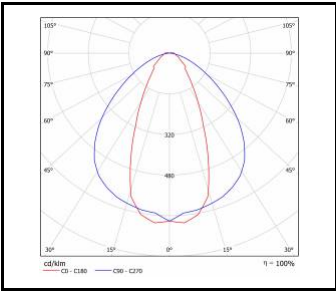
GENERAL CARD

Rated power of the luminaire [W]*	Colour temperature [K]	Luminous flux [lm]*	Optics	DIMM DALI	Through wiring	Dimensions (H/W/T/S) [mm]	Index
30	4000	4300	60	yes	7x2,5	3360/47/52	>> 974335
30	4000	4300	90	yes	7x2,5	3360/47/52	>> 974359
30	4000	4300	45		5x2,5	3360/47/52	>> 974304
30	4000	4300	60		5x2,5	3360/47/52	>> 974328
30	4000	4300	90		5x2,5	3360/47/52	>> 974342
51	4000	7100	45	yes	7x2,5	3360/47/52	>> 974373
51	4000	7100	60	yes	7x2,5	3360/47/52	>> 974397
51	4000	7100	90	yes	7x2,5	3360/47/52	>> 974410
51	4000	7100	45		5x2,5	3360/47/52	>> 974366
51	4000	7100	60		5x2,5	3360/47/52	>> 974380
51	4000	7100	90		5x2,5	3360/47/52	>> 974403
76	4000	10500	45	yes	7x2,5	3360/47/52	>> 974434
76	4000	10500	60	yes	7x2,5	3360/47/52	>> 974458
76	4000	10500	90	yes	7x2,5	3360/47/52	>> 974472
76	4000	10500	45		5x2,5	3360/47/52	>> 974427
76	4000	10500	60		5x2,5	3360/47/52	>> 974441
76	4000	10500	90		5x2,5	3360/47/52	>> 974465
108	4000	15200	45	yes	7x2,5	3360/47/52	>> 974496
108	4000	15200	60	yes	7x2,5	3360/47/52	>> 974519
108	4000	15200	90	yes	7x2,5	3360/47/52	>> 974533
108	4000	15200	45		5x2,5	3360/47/52	>> 974489
108	4000	15200	60		5x2,5	3360/47/52	>> 974502
108	4000	15200	90		5x2,5	3360/47/52	>> 974526
155	4000	21000	45	yes	7x2,5	3360/47/52	>> 974557
155	4000	21000	60	yes	7x2,5	3360/47/52	>> 974571
155	4000	21000	90	yes	7x2,5	3360/47/52	>> 974595
155	4000	21000	45		5x2,5	3360/47/52	>> 974540
155	4000	21000	60		5x2,5	3360/47/52	>> 974564
155	4000	21000	90		5x2,5	3360/47/52	>> 974588

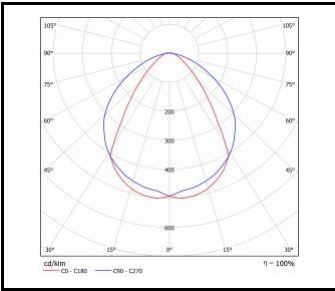
LINEA 3 LED

GENERAL CARD

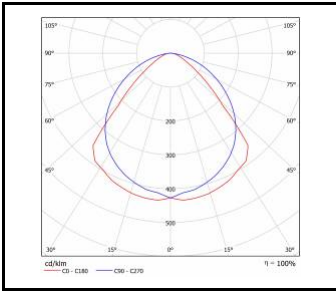
LUMINOUS INTENSITY DISTRIB. CURVE



Linea 3 LED 45D



Linea 3 Led 60D



Linea 3 Led 90D

LINEA 3 LED

GENERAL CARD

ACCESSORIES AVAILABLE

index	Name
974601	Linea 3 LED 1680mm - moduł LS2 5P
974618	Linea 3 LED 1680mm - moduł LS2 7P
974625	Linea 3 LED 3340mm - moduł LS2 5P
974632	Linea 3 LED 3340mm - moduł LS2 7P
974649	Linea 3 LED - closing set

LINEA 2 LED

GENERAL CARD



TECHNICAL PARAMETERS

Ingress protection:	IP20
Impact resistance:	IK06
Nominal power [W]:	14.00 - 146.00
Luminous flux [lm]*:	2250 - 22100
Colour temperature [K]:	4000
SDCM:	≤ 3
Electrical protection class:	I
Energy efficiency class:	B; C
Material of the body:	aluminium
Colour of the body:	grey
Optics material:	PMMA
Optics:	lens
Beam angle [°]:	45; 60; 90
Mounting version:	surface, suspended
Dimensions (H/W/T/S) [mm]:	47/52/1680; 47/52/3360
Warranty [years]:	5

CHARACTERISTICS

LINEA 2 LED is a system of suspended and surface-mounted NEXT GEN lighting line, which is a new generation of lamps dedicated to LED technology. Innovative connection system and through wiring allow quick connection of luminaires into a lighting line. The construction used allows for easy installation and connection of the power supply. The body, made from scratch, made of aluminum profile and subjected to anodization process, provides the luminaire with strength and solidity, and the narrow side profile allows installation in hard-to-reach places. Leds from reputable manufacturer integrated with redesigned brand new modules have an impact on very high luminous efficacy: up to 157 lm/W. This guarantees that the required lighting level is achieved and that significant energy savings are achieved. The optical system is made of UV-resistant PMMA. Thanks to the use of linear lenses it is possible to adapt to different lighting requirements - 3 distribution angles: 90, 60, 45.

APPLICATION

Particularly well suited for indoor use. Dedicated as the primary light source for commercial facilities, manufacturing plants and warehouses. It is appropriate for new applications as well as replacing conventional T8 & T5 fittings on energy-saving LED solutions.

LINEA 2 LED

GENERAL CARD

AVAILABLE VERSIONS



Click index >>, to see details

LINEA 2 LED 14W

Nominal power [W]	Colour temperature [K]	Luminous flux [lm]*	Beam angle [°]	DIMM DALI	Through wiring	Dimensions (H/W/T/S) [mm]	Energy efficiency class	Index
14	4000	2250	45		LS2 5P	47/52/1680	B	>> 966002
14	4000	2250	60		LS2 5P	47/52/1680	B	>> 966026
14	4000	2250	90		LS2 5P	47/52/1680	B	>> 966040
14	4000	2250	45	yes	LS2 7P	47/52/1680	B	>> 966019
14	4000	2250	60	yes	LS2 7P	47/52/1680	B	>> 966033
14	4000	2250	90	yes	LS2 7P	47/52/1680	B	>> 966057

LINEA 2 LED 24W

Nominal power [W]	Colour temperature [K]	Luminous flux [lm]*	Beam angle [°]	DIMM DALI	Through wiring	Dimensions (H/W/T/S) [mm]	Energy efficiency class	Index
24	4000	3750	45		LS2 5P	47/52/1680	C	>> 966064
24	4000	3750	60		LS2 5P	47/52/1680	C	>> 966088
24	4000	3750	90		LS2 5P	47/52/1680	C	>> 966101
24	4000	3750	45	yes	LS2 7P	47/52/1680	C	>> 966071
24	4000	3750	60	yes	LS2 7P	47/52/1680	C	>> 966095
24	4000	3750	90	yes	LS2 7P	47/52/1680	C	>> 966118

LINEA 2 LED 28W

Nominal power [W]	Colour temperature [K]	Luminous flux [lm]*	Beam angle [°]	DIMM DALI	Through wiring	Dimensions (H/W/T/S) [mm]	Energy efficiency class	Index
28	4000	4500	45		LS2 5P	47/52/3360	B	>> 966347
28	4000	4500	60		LS2 5P	47/52/3360	B	>> 966361
28	4000	4500	90		LS2 5P	47/52/3360	B	>> 966385
28	4000	4500	45	yes	LS2 7P	47/52/3360	B	>> 966354
28	4000	4500	60	yes	LS2 7P	47/52/3360	B	>> 966378
28	4000	4500	90	yes	LS2 7P	47/52/3360	B	>> 966392

LINEA 2 LED 36W

Nominal power [W]	Colour temperature [K]	Luminous flux [lm]*	Beam angle [°]	DIMM DALI	Through wiring	Dimensions (H/W/T/S) [mm]	Energy efficiency class	Index
36	4000	5550	45		LS2 5P	47/52/1680	C	>> 966668
36	4000	5550	60		LS2 5P	47/52/1680	C	>> 966149
36	4000	5550	90		LS2 5P	47/52/1680	C	>> 966163
36	4000	5550	45	yes	LS2 7P	47/52/1680	C	>> 966675
36	4000	5550	60	yes	LS2 7P	47/52/1680	C	>> 966156
36	4000	5550	90	yes	LS2 7P	47/52/1680	C	>> 966170

LINEA 2 LED

GENERAL CARD

LINEA 2 LED 48W

Nominal power [W]	Colour temperature [K]	Luminous flux [lm]*	Beam angle [°]	DIMM DALI	Through wiring	Dimensions (H/W/T/S) [mm]	Energy efficiency class	Index
48	4000	7500	45		LS2 5P	47/52/3360	C	>> 966408
48	4000	7500	60		LS2 5P	47/52/3360	C	>> 966422
48	4000	7500	90		LS2 5P	47/52/3360	C	>> 966446
48	4000	7500	45	yes	LS2 7P	47/52/3360	C	>> 966415
48	4000	7500	60	yes	LS2 7P	47/52/3360	C	>> 966439
48	4000	7500	90	yes	LS2 7P	47/52/3360	C	>> 966453

LINEA 2 LED 51W

Nominal power [W]	Colour temperature [K]	Luminous flux [lm]*	Beam angle [°]	DIMM DALI	Through wiring	Dimensions (H/W/T/S) [mm]	Energy efficiency class	Index
51	4000	8000	45		LS2 5P	47/52/1680	C	>> 966187
51	4000	8000	60		LS2 5P	47/52/1680	C	>> 966200
51	4000	8000	90		LS2 5P	47/52/1680	C	>> 966224
51	4000	8000	45	yes	LS2 7P	47/52/1680	C	>> 966194
51	4000	8000	60	yes	LS2 7P	47/52/1680	C	>> 966217
51	4000	8000	90	yes	LS2 7P	47/52/1680	C	>> 966682

LINEA 2 LED 72W

Nominal power [W]	Colour temperature [K]	Luminous flux [lm]*	Beam angle [°]	DIMM DALI	Through wiring	Dimensions (H/W/T/S) [mm]	Energy efficiency class	Index
72	4000	11100	45		LS2 5P	47/52/3360	C	>> 966460
72	4000	11100	60		LS2 5P	47/52/3360	C	>> 966484
72	4000	11100	90		LS2 5P	47/52/3360	C	>> 966507
72	4000	11100	45	yes	LS2 7P	47/52/3360	C	>> 966477
72	4000	11100	60	yes	LS2 7P	47/52/3360	C	>> 966491
72	4000	11100	90	yes	LS2 7P	47/52/3360	C	>> 966514

LINEA 2 LED 73W

Nominal power [W]	Colour temperature [K]	Luminous flux [lm]*	Beam angle [°]	DIMM DALI	Through wiring	Dimensions (H/W/T/S) [mm]	Energy efficiency class	Index
73	4000	11050	45		LS2 5P	47/52/1680	C	>> 966248
73	4000	11050	60		LS2 5P	47/52/1680	C	>> 966262
73	4000	11050	90		LS2 5P	47/52/1680	C	>> 966286
73	4000	11050	45	yes	LS2 7P	47/52/1680	C	>> 966255
73	4000	11050	60	yes	LS2 7P	47/52/1680	C	>> 966279
73	4000	11050	90	yes	LS2 7P	47/52/1680	C	>> 966293

LINEA 2 LED

GENERAL CARD

LINEA 2 LED 102W

Nominal power [W]	Colour temperature [K]	Luminous flux [lm]*	Beam angle [°]	DIMM DALI	Through wiring	Dimensions (H/W/T/S) [mm]	Energy efficiency class	Index
102	4000	16000	45		LS2 5P	47/52/3360	C	>> 966521
102	4000	16000	60		LS2 5P	47/52/3360	C	>> 966545
102	4000	16000	90		LS2 5P	47/52/3360	C	>> 966569
102	4000	16000	45	yes	LS2 7P	47/52/3360	C	>> 966538
102	4000	16000	60	yes	LS2 7P	47/52/3360	C	>> 966552
102	4000	16000	90	yes	LS2 7P	47/52/3360	C	>> 966576

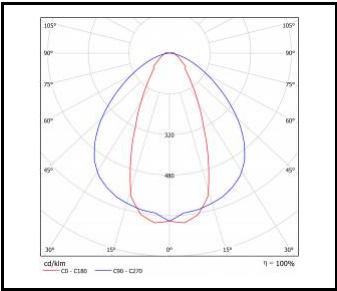
LINEA 2 LED 146W

Nominal power [W]	Colour temperature [K]	Luminous flux [lm]*	Beam angle [°]	DIMM DALI	Through wiring	Dimensions (H/W/T/S) [mm]	Energy efficiency class	Index
146	4000	22100	45		LS2 5P	47/52/3360	C	>> 966583
146	4000	22100	60		LS2 5P	47/52/3360	C	>> 966606
146	4000	22100	90		LS2 5P	47/52/3360	C	>> 966620
146	4000	22100	45	yes	LS2 7P	47/52/3360	C	>> 966590
146	4000	22100	60	yes	LS2 7P	47/52/3360	C	>> 966613
146	4000	22100	90	yes	LS2 7P	47/52/3360	C	>> 966637

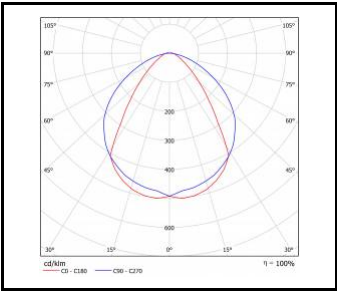
LINEA 2 LED

GENERAL CARD

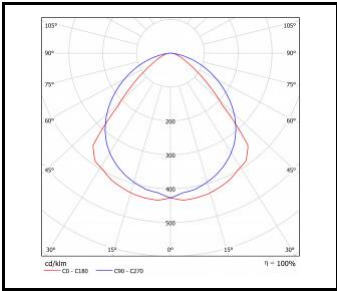
LUMINOUS INTENSITY DISTRIB. CURVE



LINEA 2 LED 45D



LINEA 2 LED 60D



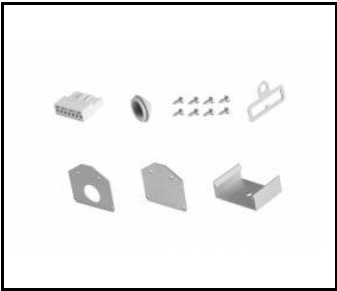
LINEA 2 LED 90D

LINEA 2 LED

GENERAL CARD

ACCESSORIES AVAILABLE

index	Name
966309	LINEA 2 LED 1680mm - LS2 5P blank module
966316	LINEA 2 LED 1680mm - LS2 7P blank module
966644	LINEA 2 LED 3360mm - LS2 5P blank module
966651	LINEA 2 LED 3360mm - LS2 7P blank module
966323	LINEA 2 LED - closing set
966330	LINEA 2 LED - 840mm cover



LINEA 2 LED - closing set (966323)

По вопросам продаж и поддержки обращайтесь:

Алматы (7273)495-231
Архангельск (8182)63-90-72
Астрахань (8512)99-46-04
Барнаул (3852)73-04-60
Белгород (4722)40-23-64
Брянск (4832)59-03-52
Владивосток (423)249-28-31
Волгоград (844)278-03-48
Вологда (8172)26-41-59
Воронеж (473)204-51-73
Екатеринбург (343)384-55-89
Иваново (4932)77-34-06
Ижевск (3412)26-03-58
Иркутск (395)279-98-46
Россия (495)268-04-70

Казань (843)206-01-48
Калининград (4012)72-03-81
Калуга (4842)92-23-67
Кемерово (3842)65-04-62
Киров (8332)68-02-04
Краснодар (861)203-40-90
Красноярск (391)204-63-61
Курск (4712)77-13-04
Липецк (4742)52-20-81
Магнитогорск (3519)55-03-13
Москва (495)268-04-70
Мурманск (8152)59-64-93
Набережные Челны (8552)20-53-41
Нижний Новгород (831)429-08-12
Киргизия (996)312-96-26-47

Новокузнецк (3843)20-46-81
Новосибирск (383)227-86-73
Омск (3812)21-46-40
Орел (4862)44-53-42
Оренбург (3532)37-68-04
Пенза (8412)22-31-16
Пермь (342)205-81-47
Ростов-на-Дону (863)308-18-15
Рязань (4912)46-61-64
Самара (846)206-03-16
Санкт-Петербург (812)309-46-40
Саратов (845)249-38-78
Севастополь (8692)22-31-93
Симферополь (3652)67-13-56
Казахстан (7172)727-132

Смоленск (4812)29-41-54
Сочи (862)225-72-31
Ставрополь (8652)20-65-13
Сургут (3462)77-98-35
Тверь (4822)63-31-35
Томск (3822)98-41-53
Тула (4872)74-02-29
Тюмень (3452)66-21-18
Ульяновск (8422)24-23-59
Уфа (347)229-48-12
Хабаровск (4212)92-98-04
Челябинск (351)202-03-61
Череповец (8202)49-02-64
Ярославль (4852)69-52-93